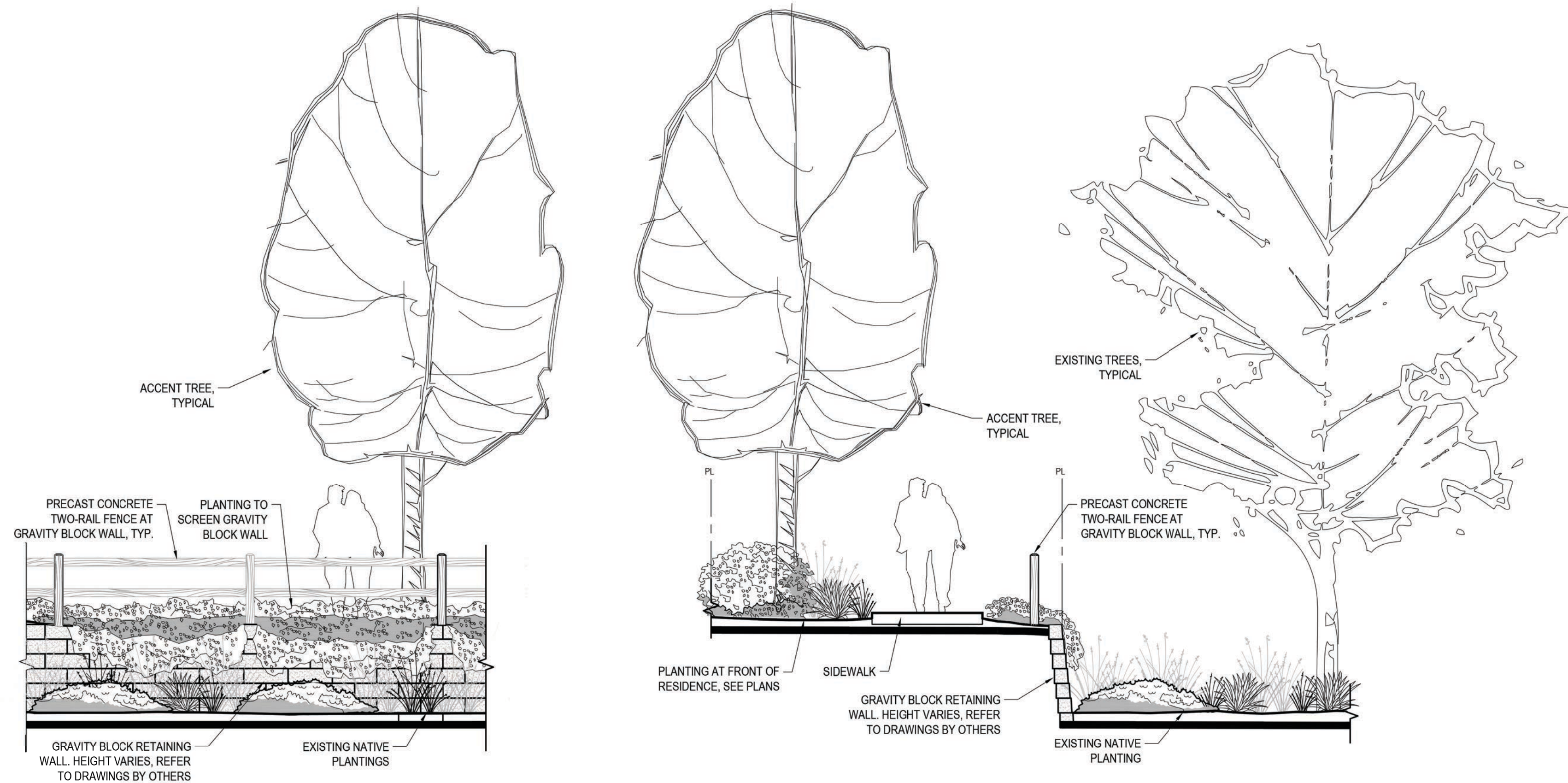


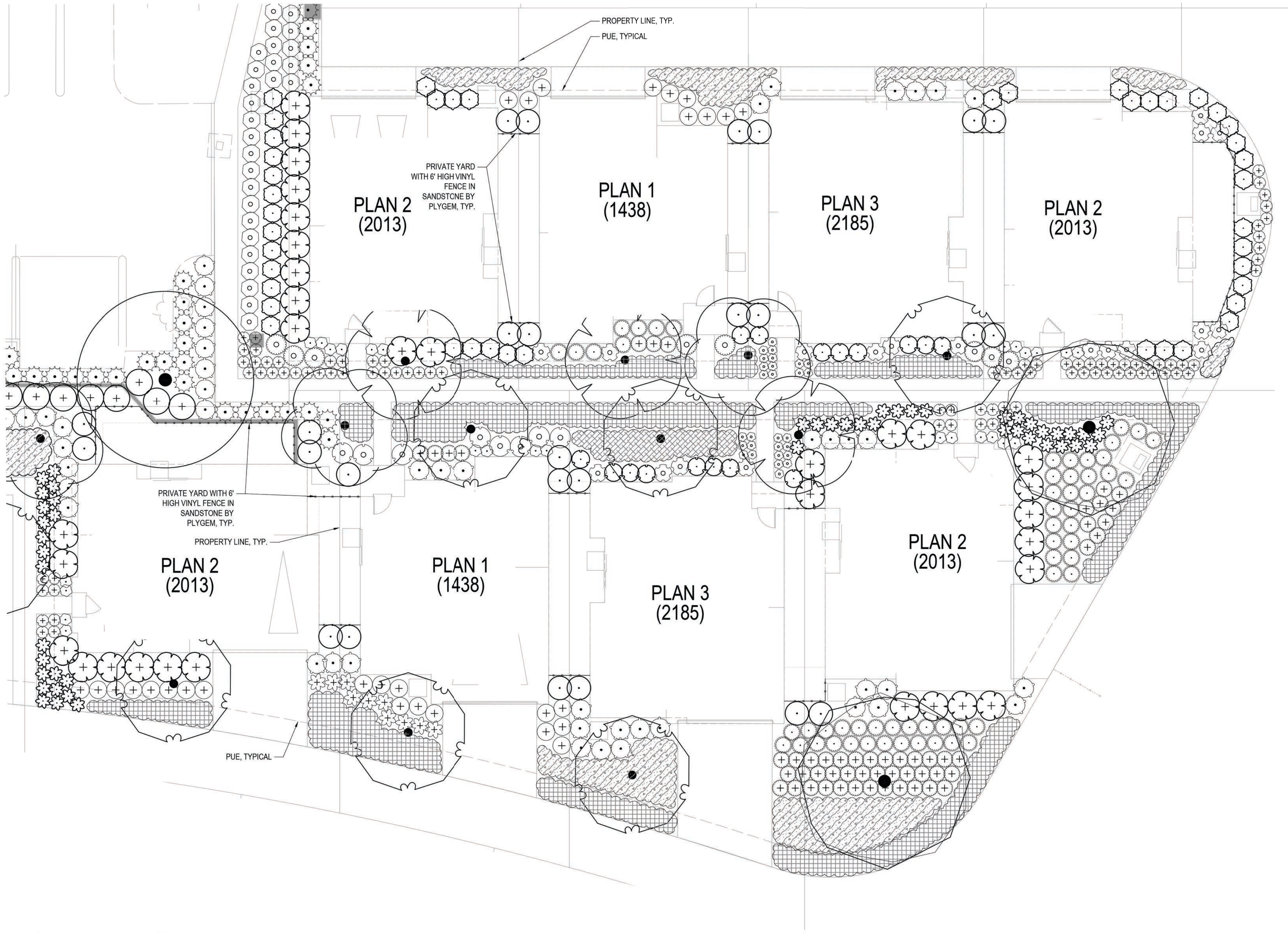
	ACCENT TREES	
	SMALLER SIZE SUITABLE FOR PLANTING ADJACENT HOMES OR IN TIGHTER PLANTING	
	BEACH ARCHITECTURAL ACACIA	
	CERIS CANADENSIS / OKLAHOMA / OKLAHOMA REDBUD	15 GAL
	WUODS (L), 20'-30' HW	
	CHIONANTHUS RETICUS / CHINESE FRINGE TREE	15 GAL
	WUODS (M), 15'-20' H X 20'-25' W	
	LAGERSTROEMIA INDICA / MUSKOGEE / MUSKOGEE CRAPE MYRTLE	15 GAL
	WUODS (L), 15'-20' H X 15' W	
	OLEA EUROPAEA / MONHER TM / FRUITLESS OLIVE TREE	15 GAL
	WUODS (L), 25'-30' H X 25' W	
	VITEA AGNUS-CASTUS / CHASTE TREE	15 GAL
	WUODS (L), 15'-25' HW	
	STREET TREES	
	30' DIAMETER DECIDUOUS STREET TREES	
	PLATANUS X ACERIFOLIA / COLUMBIA / LONDON PLANE TREE	24" BOX
	WUODS (M), 40'-60' H X 30'-40' W	
	COLUMNAR SHADE TREES	
	COLUMNAR SHADE TREES IN TIGHTER LOCATIONS.	
	ACER GINNALA / AMUR MAPLE	15 GAL
	WUODS (M), 15'-20' HW	
	NYSSA SYLVATICA / SOUR GUM	15 GAL
	WUODS (M), 30'-50' H X 15'-25' W	
	QUERCUS ROBUR / FASTIGIATA / PYRAMIDAL ENGLISH OAK	15 GAL
	WUODS (M), 50' H X 15' W	
	QUERCUS ROBUR / REGAL PRINCE / REGAL PRINCE ENGLISH OAK	15 GAL
	WUODS (M), 50' H X 20'-25' W	
	PARKING LOT / SHADE TREES	
	PLATANUS X ACERIFOLIA / COLUMBIA / LONDON PLANE TREE	24" BOX
	WUODS (M), 40'-60' H X 30'-40' W	
	ULMUS-PARVIFOLIA / DRAKE / DRAKE ELM	24" BOX
	WUODS (M), 70' H X 40' W	
	SCREENING VINES	
	EVERGREEN AND DECIDUOUS VINES TO PROVIDE SCREENING AND SEASONAL	
	INTEREST ACROSS EXPANSES OF FENCE.	
	FIGUS PUNILA / CREEPING FIG	5 GAL
	WUODS (M)	
	MACFADYENIA UNGUIS-CATI / YELLOW TRUMPET VINE	5 GAL
	WUODS (L)	
	PARTHENOCESSUS TRICUSPIDATA / VEITCHII / BOSTON IVY	5 GAL
	WUODS (M)	
	ENTRY AND FOUNDATION PLANTING	
	ENHANCED PLANTING ADJACENT TO ARCHITECTURE. TIGHTER PLANT SPACING AND	
	CONTRASTING FORM AND TEXTURE TO HIGHLIGHT ARCHITECTURAL FEATURES.	
	ANGIOZANTHOS X BIG RED / BIG RED KANGAROO PAW	1 GAL
	WUODS (L), 3'-4' HW	
	ANGIOZANTHOS X BUSH BABY / BUSH BABY KANGAROO PAW	1 GAL
	WUODS (L), 10'-24" HW	
	CHONOROPETALUM TECTORUM / CAPE RUSH	1 GAL
	WUODS (L), 2'-3' HW	
	DIANELLA REVOLUTA / LITTLE REV / LITTLE REV FLAX LILY	1 GAL
	WUODS (L), 18'-24" HW	
	DODONAEA VISCOSA / PURPUREA / PURPLE LEAFED HOPSEED BUSH	1 GAL
	WUODS (L), 12' H X 6'-8' W	
	FESTUCA MAIREI / GREENLEES FORM / GREENLEES ATLAS FESCUE	100% 1 GAL 30' oo
	WUODS (L), 24'-30" HW	
	ILEX CRENATA / SKY PENCIL / SKY PENCIL JAPANESE HOLLY	5 GAL
	WUODS (L), 6'-8' H X 2'-3' W	
	LEUCADENDRON X SILVAN RED / CONEBUSH	1 GAL
	WUODS (UN), 4'-6' H X 4'-4' W	
	LOMANDRA LONGIFOLIA / BREEZE / DWARF MAT RUSH	1 GAL
	WUODS (UN), 3' HW	
	LOREPETALUM C. RUB. / FIRE DANCE / PURPLE LEAF FRINGE FLOWER	5 GAL
	WUODS (M), 5'-6' HW	
	OLEA EUROPAEA / LITTLE OLLIE TM / LITTLE OLLIE OLIVE	5 GAL
	WUODS (L), 4'-6' HW	
	PHORIUM TENAX / MAORI MAIDENSUNRISE / NEW ZEALAND FLAX	5 GAL
	WUODS (L), 2'-3' HW	
	PITTSOPORIUM TOBIRA / VARIEGATA / VARIEGATED MOCK ORANGE	5 GAL
	WUODS (L), 8'-15' HW	
	PODOCARPUS MACROPHYLLUS MAKI / SHRUBBY YEW	1 GAL
	WUODS (L), 8'-10' H X 3'-4' W	
	PRUNUS LAUROCRASUS / OTTO LUYKEN / LUYKENS LAUREL	5 GAL
	WUODS (M), 3'-4' H X 5'-6' W	
	RHAPHIOLEPIS UMBELLATA / PINKIE / PINK INDIAN HAWTHORNE	1 GAL
	WUODS (L), 2'-3' H X 3'-4' W	
	ROSA X FLOWER CARPET WHITE / ROSE	2 GAL
	WUODS (M), 2'-2.5' H X 3' W	
	SEMPERPARVUS OFFICINALIS / HUNTINGTON CARPET / HUNTINGTON CARPET ROSEMARY	100% 1 GAL 30' oo
	WUODS (L), 1'-2' H X 6' W	
	TRACHELOSPERMUM JASMINOIDES / CHINESE STAR JASMINE	100% 1 GAL 36' oo
	WUODS (M)	
	WESTRINGIA FRUTICOSA / MORNING LIGHT / MORNING LIGHT COAST ROSEMARY	1 GAL
	WUODS (L), 3'-4' H X 4'-5' W	
	PARKSIDE WAY PARKWAY ISLANDS	
	GROUNDCOVERS AND SHRUBS FOR STREETSCAPE PLANTING PROVIDING SEASONAL	
	INTEREST.	
	DIANELLA TASMANICA / VAREGATA / FLAX LILY	1 GAL
	WUODS (M), 15'-18' H X 12" W	
	DIETES X NOLA ALBA / KATRINA AFRICAN IRIS	1 GAL
	WUODS (L), 2'-3' H X 3'-4' W	
	FESTUCA MAIREI / GREENLEE S FORM / GREENLEE ATLAS FESCUE	100% 1 GAL 30' oo
	WUODS (L), 24'-30" HW	
	MULHBERGIA CAPILLARIS / PINK MUHLY	1 GAL
	WUODS (L), 3' HW	
	MULHBERGIA DUBIA / PINE MUHLY	1 GAL
	WUODS (L), 3' HW	
	RHAPHIOLEPIS UMBELLATA / YEDDA HAWTHORN	5 GAL
	WUODS (L), 5'-6' H X 6'-8' W	
	RHAPHIOLEPIS UMBELLATA / PINKIE / PINK INDIAN HAWTHORNE	1 GAL
	WUODS (L), 2'-3' H X 3'-4' W	
	ROSA X FLOWER CARPET WHITE / ROSE	100% 1 GAL 36' oo
	WUODS (M), 2'-2.5' H X 3' W	
	TRACHELOSPERMUM JASMINOIDES / STAR JASMINE	100% 1 GAL 36' oo
	WUODS (M), 10'-15" H X 20' W	
	WESTRINGIA F. / MORNING LIGHT / MORNING LIGHT COAST ROSEMARY	5 GAL
	WUODS (L), 3'-4' H X 4'-5' W	
	COMMERCIAL / RESIDENTIAL SCREENING	
	A COMBINATION OF EVERGREEN AND DECIDUOUS SHRUBS AND GROUNDCOVER	
	PROVIDE SCREENING AND TEXTURAL INTEREST BETWEEN THE RESIDENTIAL AND	
	COMMERCIAL INTERFACE.	
	COTONEASTER DAMMERI / LOWFAST / LOWFAST BEARBERRY COTONEASTER	100% 1 GAL 36' oo
	WUODS (L), 5' H X 10' H	

 $1/4^* = 1'-0''$ 

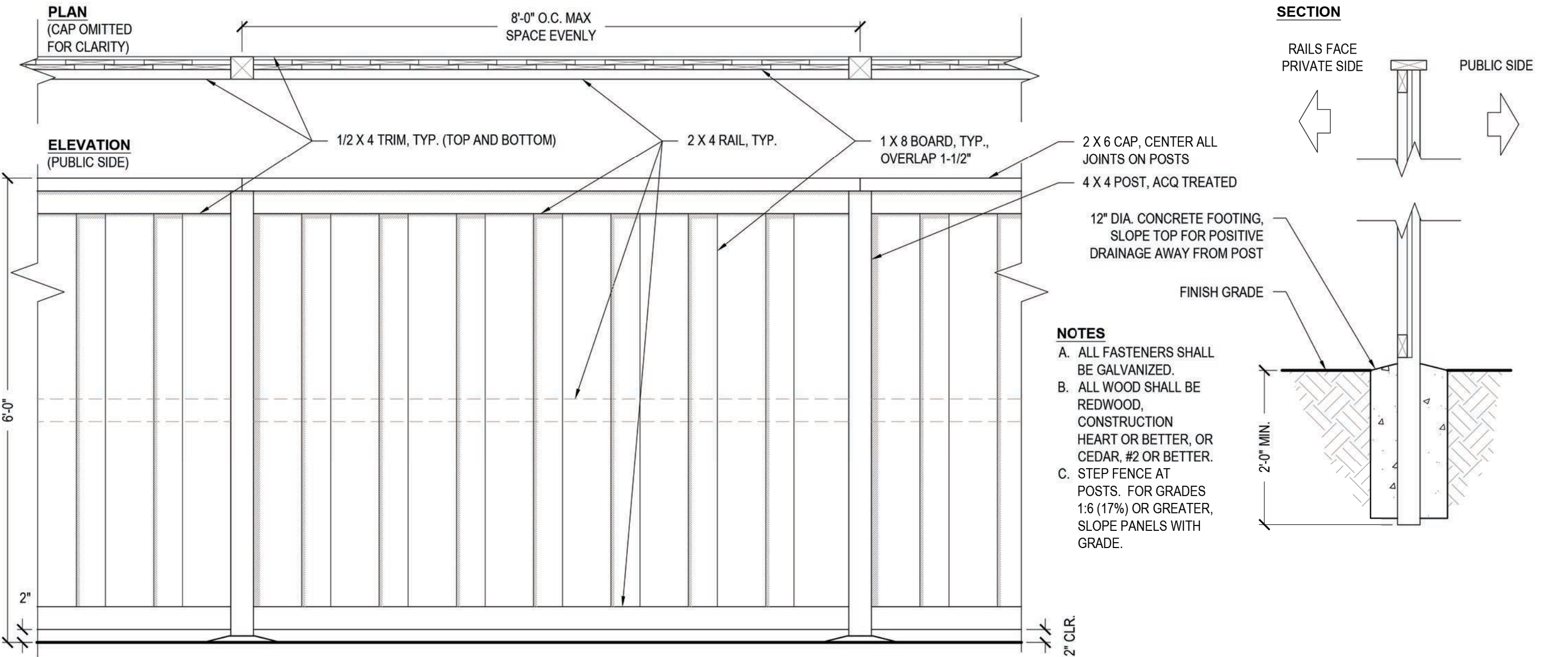
IRRIGATION SYSTEM WILL CONFORM TO THE CITY'S WATER USE ORDINANCE. FOR EACH PRIVATE RESIDENTIAL LOT, IRRIGATION SYSTEM INCLUDES A SEPARATE IRRIGATION CONNECTION AND CONTROLLER. CONTROLLER WILL BE "SMART" WITH SELF-ADJUSTING PROGRAMS BASED ON LOCAL WEATHER CONDITIONS. HYDROZONES WILL BE BASED ON EXPOSURE, PLANT WATER REQUIREMENTS AND EMISSION TYPE. IRRIGATION EMISSION SYSTEM WILL GENERALLY CONSIST OF:

- HARD PIPED DRIP OR BUBBLERS TO LARGE SHRUBS IN LINEAR ARRANGEMENTS,
- DRIP IRRIGATION FOR SHRUB AND GROUND COVER

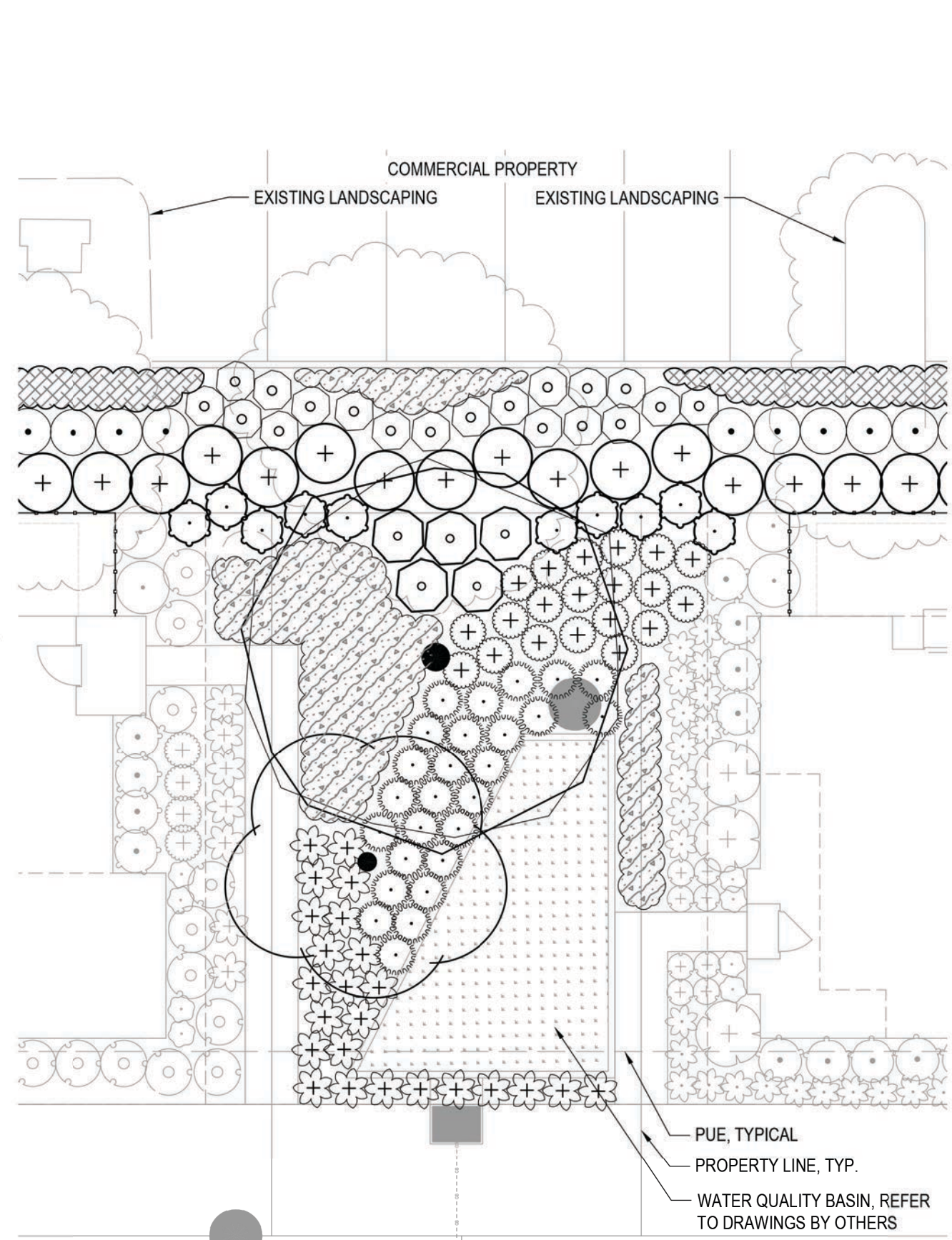
Parking Lot Shade Calculations			Project: 18020A	
Diamond Creek- DC 30 & 33			Date: 7/12/2018	
Qty. 35' Diameter Trees			25%	50%
sub total of shade at 962 sf for 100% canopy			75%	100%
Qty. 30' Diameter Trees			Total	Total
sub total of shade at 706 sf for 100% canopy			0	0
Qty. 25' Diameter Trees			0	0
sub total of shade at 491sf for 100% canopy			6	7
Qty. 20' Diameter Trees			1062	2478
sub total of shade at 314sf for 100% canopy			0	1412
Total Shade Provided			4,952	4,952
Total Parking Area			6,553	6,553
Percent Shaded			88%	88%



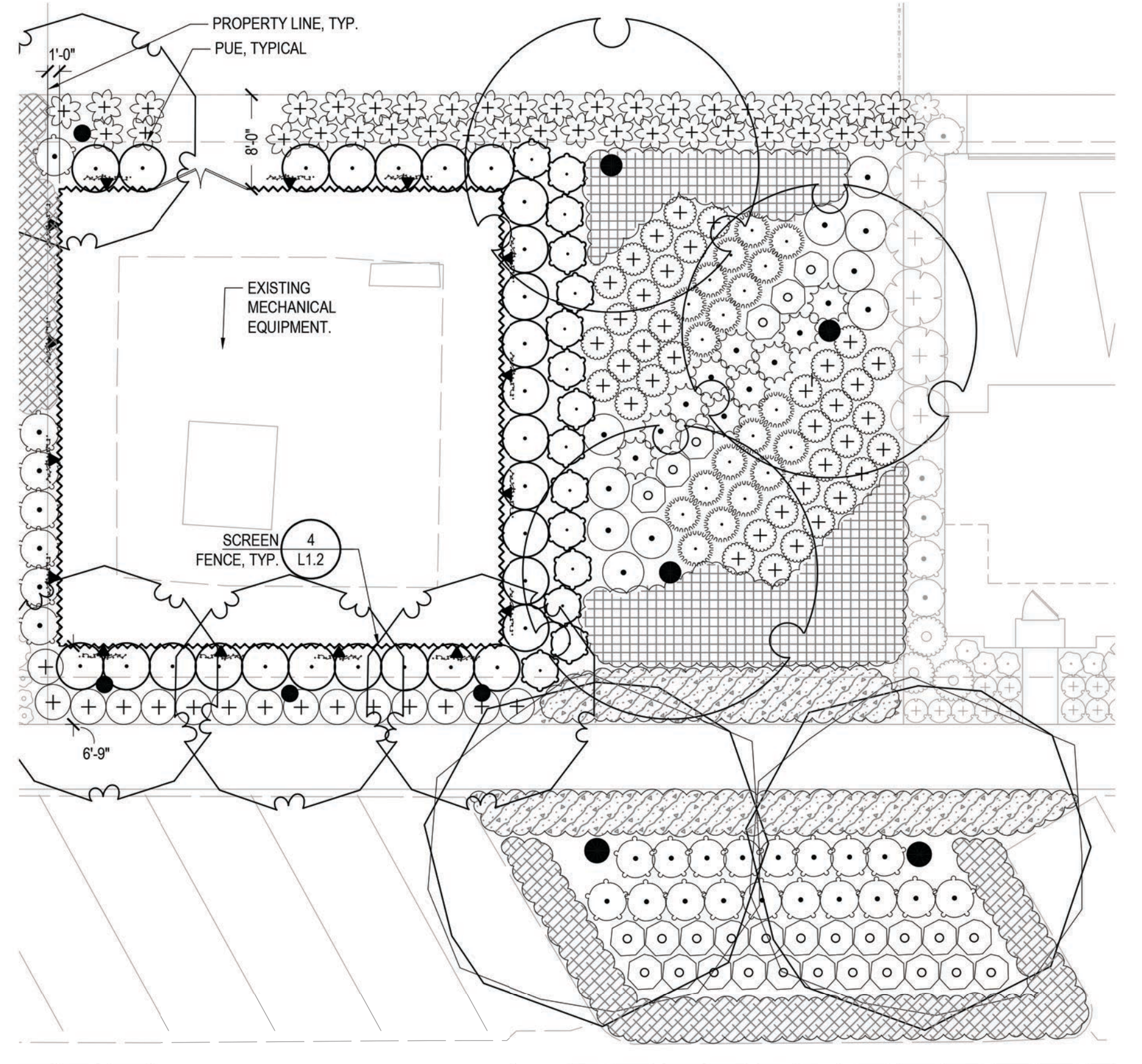
1 | TYPICAL LANDSCAPE ENLARGEMENT



4 | SCREEN FENCE AT LOT B



2 | LOT C AND TYPICAL COMMERCIAL BUFFER LANDSCAPE ENLARGEMENT



3 | LOT B AND PARKSIDE WAY LANDSCAPE ENLARGEMENT

PRELIMINARY PLANT LEGEND

TREES	CODE	BOTANICAL NAME / COMMON NAME	CONT
	ACE AMG	ACER GINNALA / AMUR MAPLE WUCOLS (M), 15'-20' HW	15 GAL.
	CHI RET	CHIONANTHUS RETUSUS / CHINESE FRINGE TREE WUCOLS (M), 15'-20' H X 20'-25' W	15 GAL.
	OLE BEA	OLEA EUROPAEA 'MONHER' TM / FRUITLESS OLIVE TREE WUCOLS (VL), 25'-30' H X 25' W	15 GAL.
	PIS KEY	PISTACIA CHINENSIS 'KEITH DAVEY' / KEITH DAVEY CHINESE PISTACHE WUCOLS (L)	15 GAL.
	PLA COL	PLATANUS X ACERIFOLIA 'COLUMBIA' / LONDON PLANE TREE WUCOLS (L)	24" BOX
	QUE REG	QUERCUS ROBUR 'REGAL PRINCE' / REGAL PRINCE ENGLISH OAK WUCOLS (M), 50' H X 20'-25' W	15 GAL.
	ULM DRA	ULMUS PARVIFOLIA 'DRAKE' / DRAKE ELM WUCOLS (M)	24" BOX
SHRUBS	CODE	BOTANICAL NAME / COMMON NAME	CONT
	ANI HYB	ANIGOZANTHOS X 'BIG RED' / BIG RED KANGAROO PAW WUCOLS (L)	5 GAL.
	ANI BUS	ANIGOZANTHOS X 'BUSH BABY' / BUSH BABY KANGAROO PAW WUCOLS (L)	1 GAL.
	CHO TET	CHONDROPETALUM TECTORUM / CAPE RUSH WUCOLS (L)	1 GAL.
	DIA LIL	DIANELLA REVOLUTA 'LITTLE REV' / LITTLE REV FLAX LILY WUCOLS (L), SAW EXPOSURE	1 GAL.
	DIE NOA	DIETES X 'NOLA ALBA' / KATRINA AFRICAN IRIS WUCOLS (L)	1 GAL.
	DOD PUP	DODONAEA VISCOSA 'PURPUREA' / PURPLE LEAFED HOPSEED BUSH WUCOLS (L)	5 GAL.
	FIC PUM	FIGUS PUMILA / CREEPING FIG WUCOLS (M)	5 GAL.
	HET ARF	HETEROMELES ARBUTIFOLIA / TOYON WUCOLS (L)	5 GAL.
	ILE CRE	ILEX CRENATA 'STOKES' / JAPANESE HOLLY WUCOLS (L)	5 GAL.
	LEU SAL	LEUCADENDRON SALIGNUM 'WINTER RED' WUCOLS (UN)	5 GAL.
	LOM BRZ	LOMANDRA LONGIFOLIA 'BREEZE' / DWARF MAT RUSH WUCOLS (UN)	1 GAL.
	LOR BUF	LOROPETALUM CHINENSE 'SUZANNE' / SUZANNE FRINGE FLOWER WUCOLS (M)	1 GAL.
	MIS MO2	MISCANTHUS SINENSIS 'MORNING LIGHT' / EULALIA GRASS WUCOLS (M)	1 GAL.
	MUH CAS	MUHLENBERGIA CAPILLARIS / PINK MUHLY WUCOLS (L)	1 GAL.
	MUH DUS	MUHLENBERGIA DUBIA / PINE MUHLY WUCOLS (L)	1 GAL.
GROUND COVERS	CODE	BOTANICAL NAME / COMMON NAME	CONT
	FES MAI	FESTUCA MAIREI 'GREENLEE'S FORM' / GREENLEE ATLAS FESCUE WUCOLS (L)	1 GAL.
	ROS FOW	ROSA X 'FLOWER CARPET WHITE' / ROSE WUCOLS (M)	1 GAL.
	TRA JAS	TRACHELOSPERMUM JASMINOIDES / STAR JASMINE WUCOLS (M)	1 GAL.

CITY OF ROSEVILLE APPROVAL