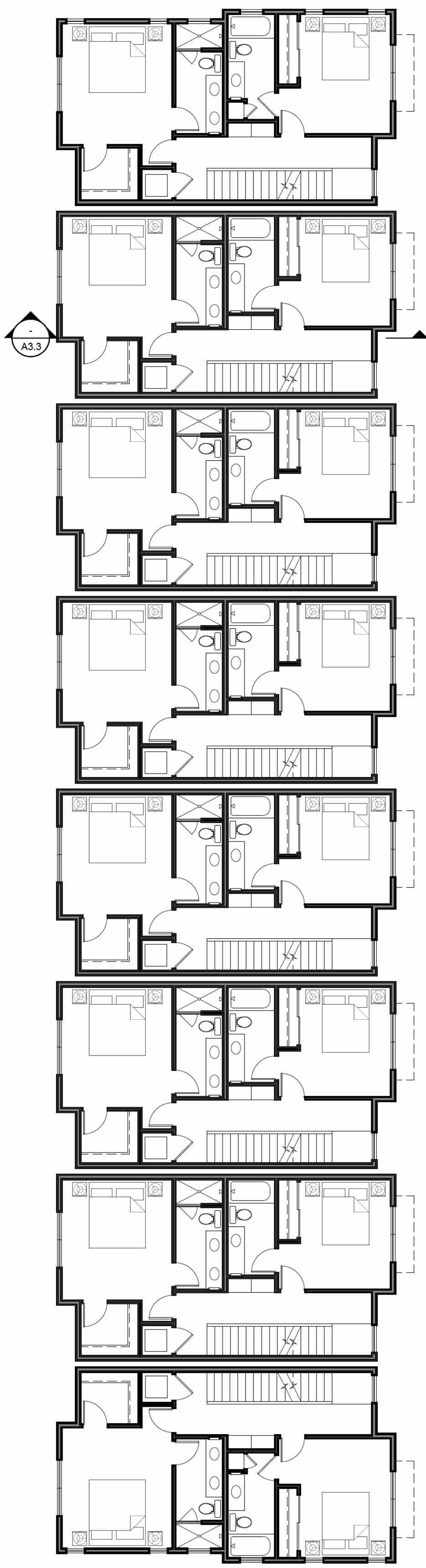
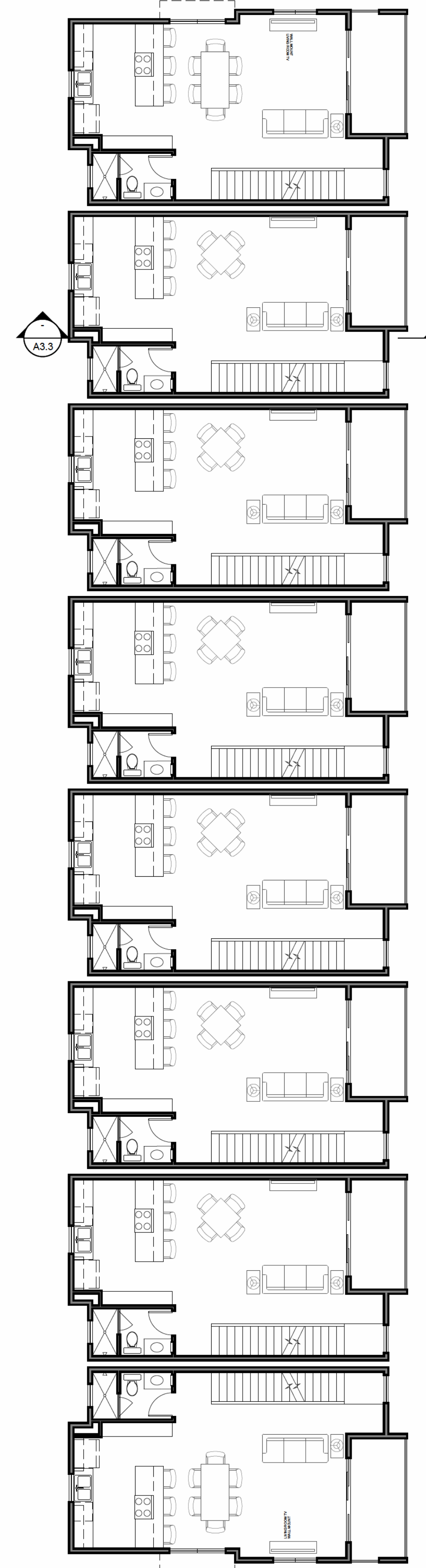


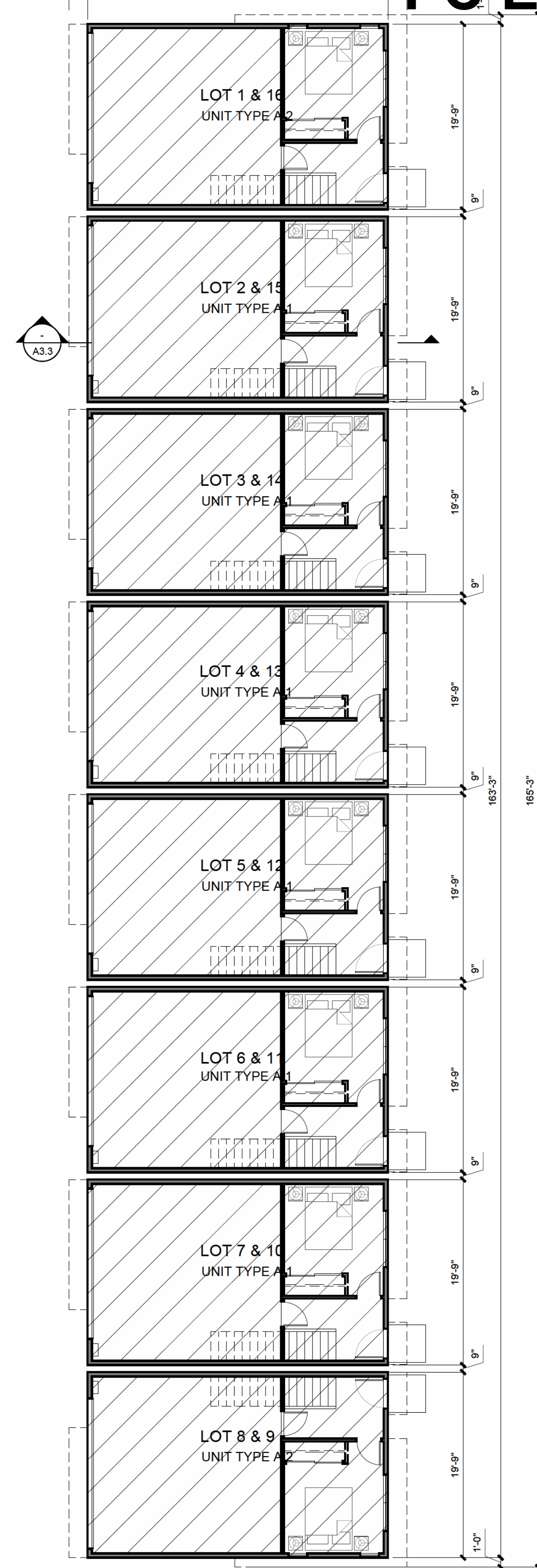
ROOF DECK PLAN



3RD FLOOR PLAN



2ND FLOOR PLAN



1ST FLOOR PLAN

03/01/19	3	CYCLE 4 - SUBMITTAL	GK
11/19/18	2	CYCLE 3 - SUBMITTAL	GK
08/16/18	1	CYCLE 2 - SUBMITTAL	GK

  
0 2 4 8 16  
SCALE 1/8" = 1'-0"  
March 1, 2019

  
City of Roseville Approval

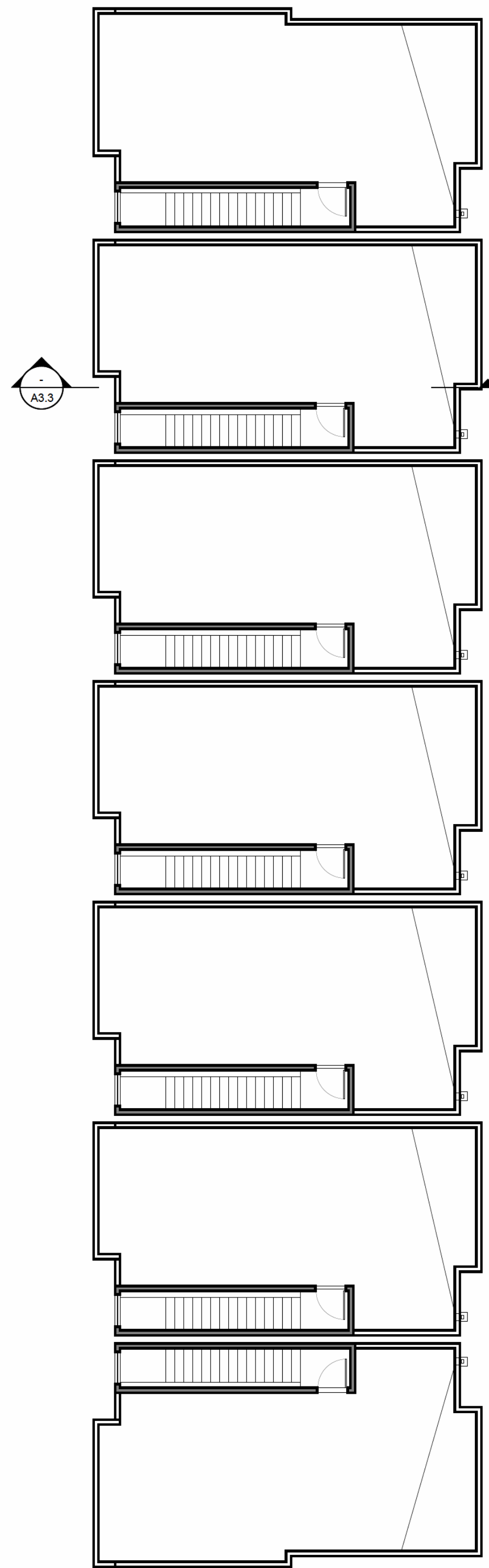
C&P  
DEVELOPMENT  
L.L.C.

# Roseville Old Town Lofts

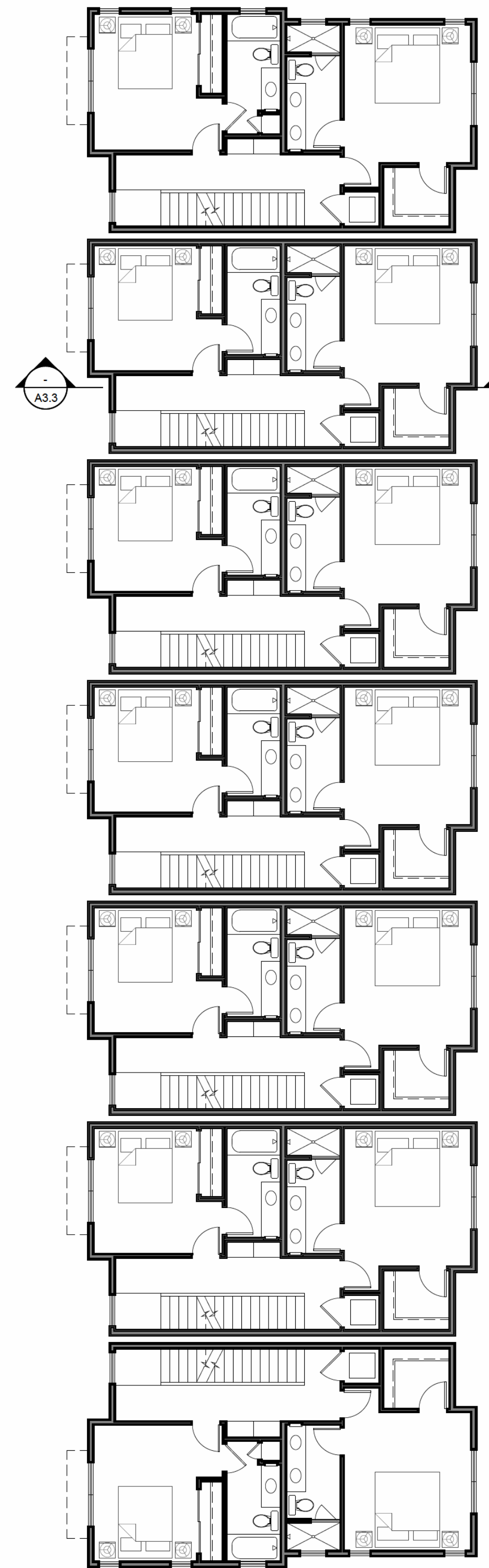
Roseville, California

BUILDING 2 FLOOR PLAN  
BUILDING 3 SIMILAR

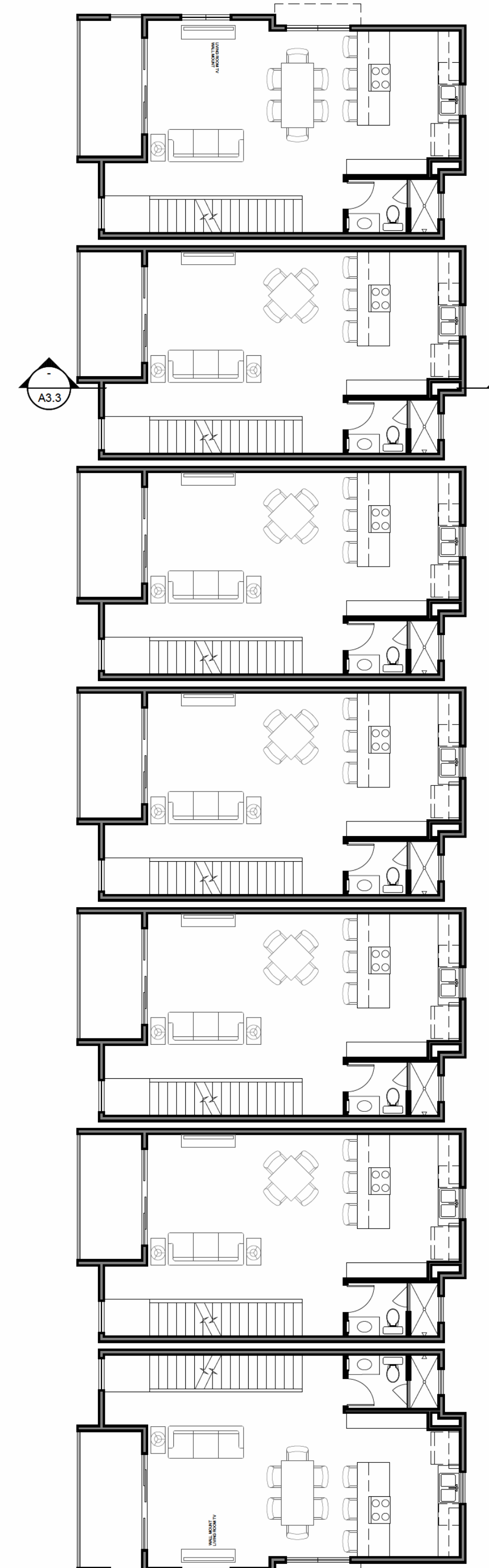
  
kuchman  
ARCHITECTS PC



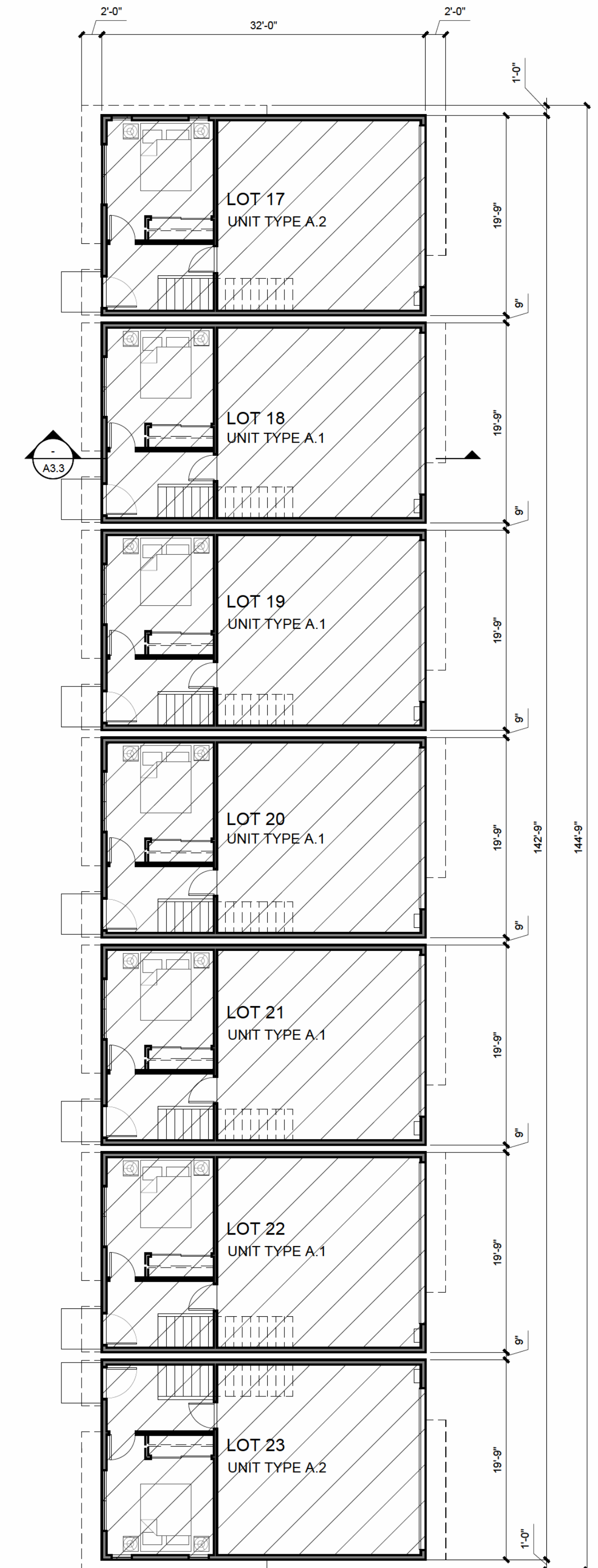
ROOF DECK PLAN



3RD FLOOR PLAN

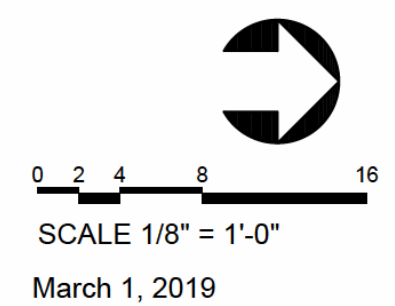


2ND FLOOR PLAN



1ST FLOOR PLAN

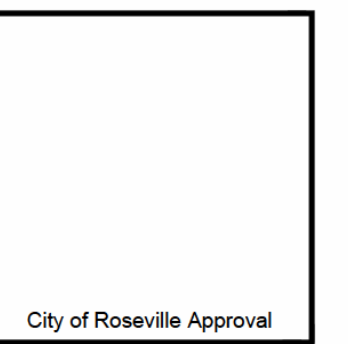
03/01/19	3	CYCLE 4 - SUBMITTAL	GK
11/19/18	2	CYCLE 3 - SUBMITTAL	GK
08/16/18	1	CYCLE 2 - SUBMITTAL	GK



March 1, 2019



kuchman  
ARCHITECTS P.C.



A2.2

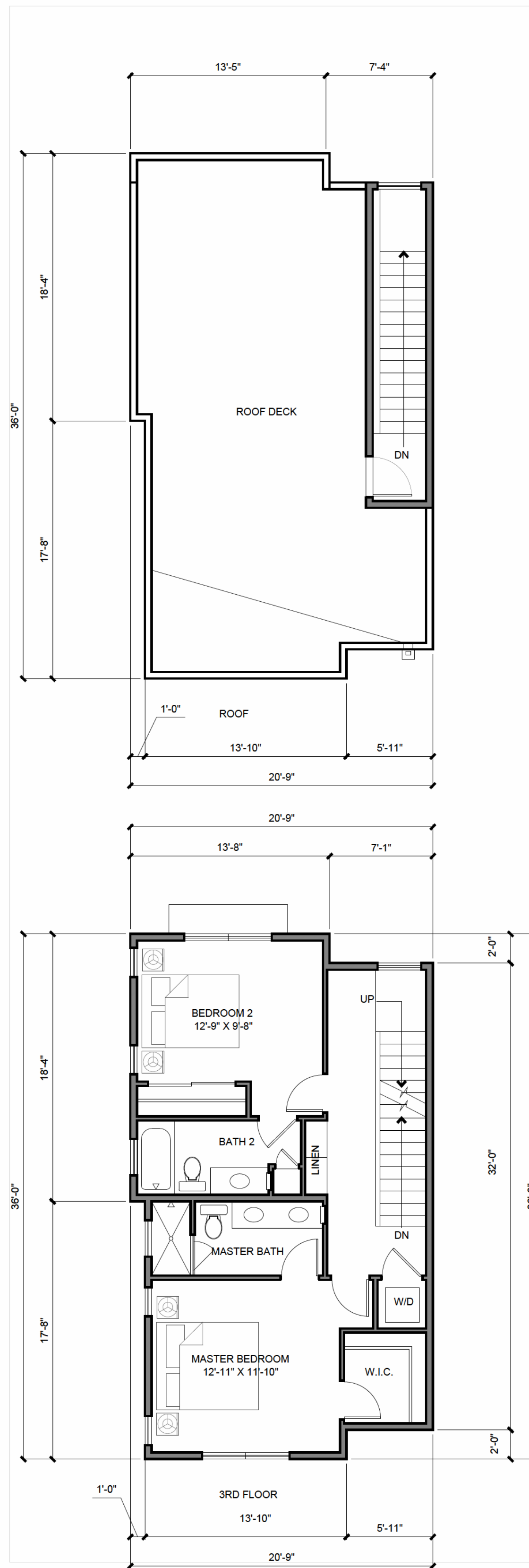
C&P  
DEVELOPMENT  
L.L.C.

# Roseville Old Town Lofts

Roseville, California

BUILDING 1 FLOOR PLANS

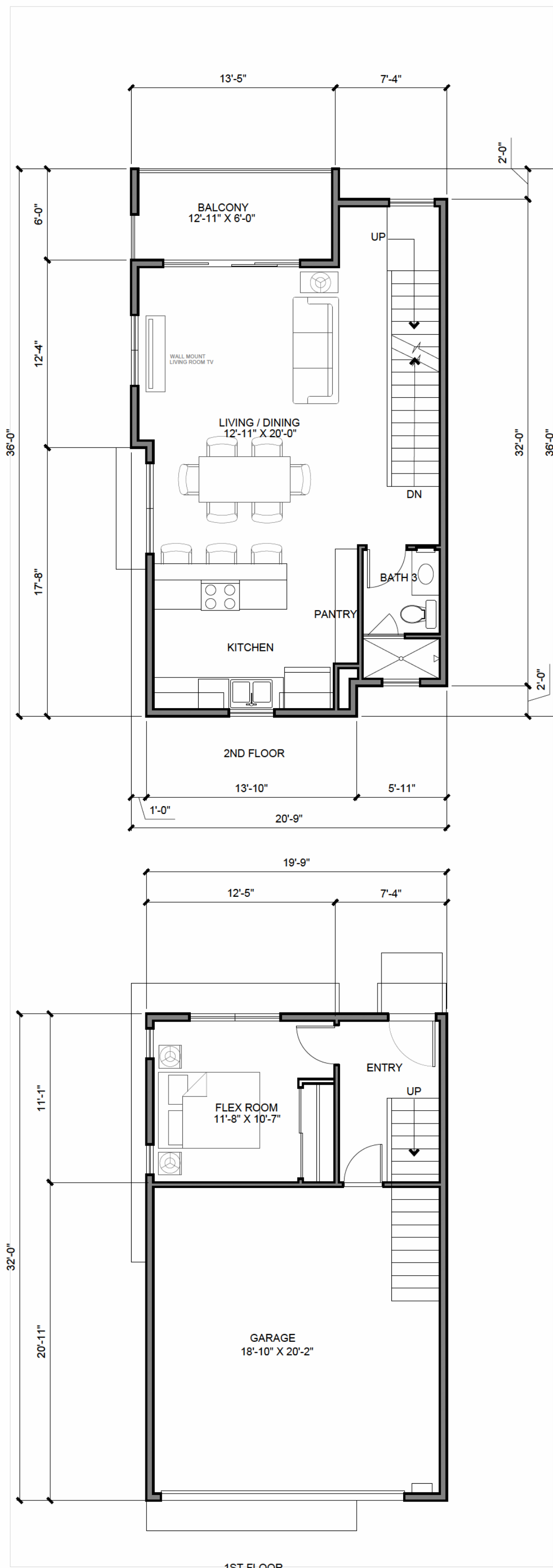




UNIT A2 - 2 BED / 3 BATH

1ST FLOOR: 224 SF.  
2ND FLOOR: 624 SF.  
3RD FLOOR: 655 SF.  
TOTAL LIVING: 1,503 SF.  
BALCONY: 80 SF.  
GARAGE: 407 SF.

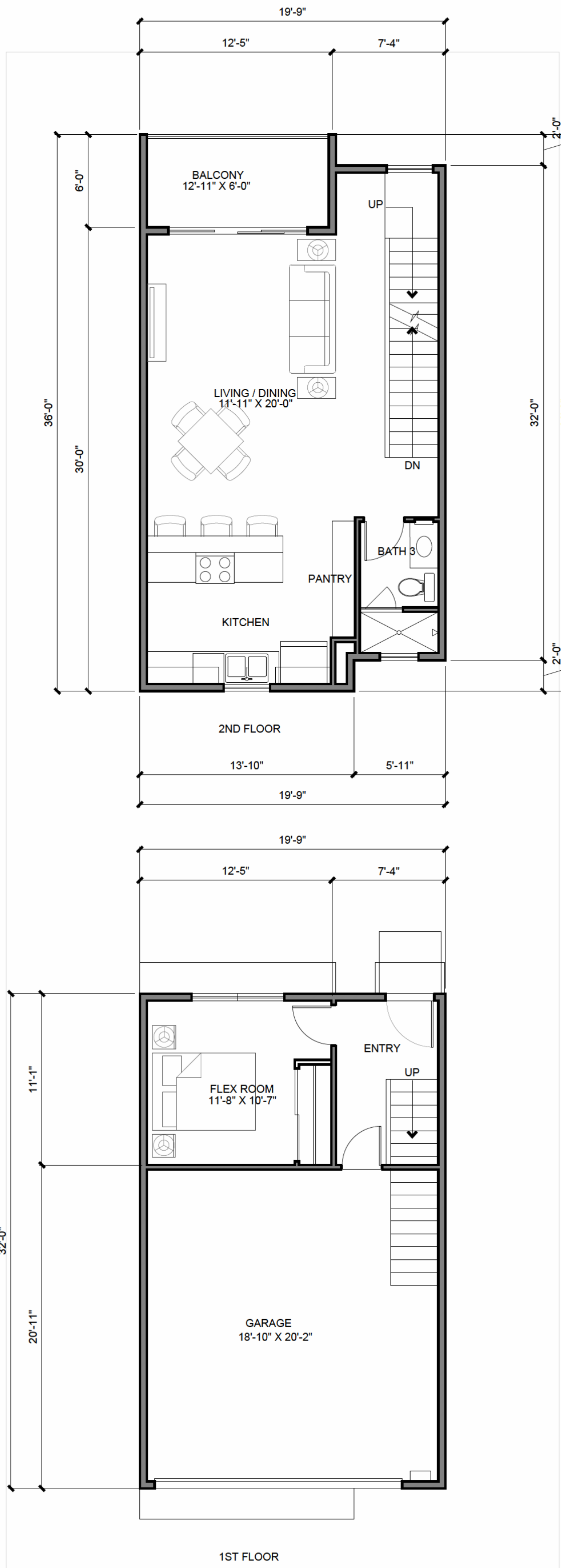
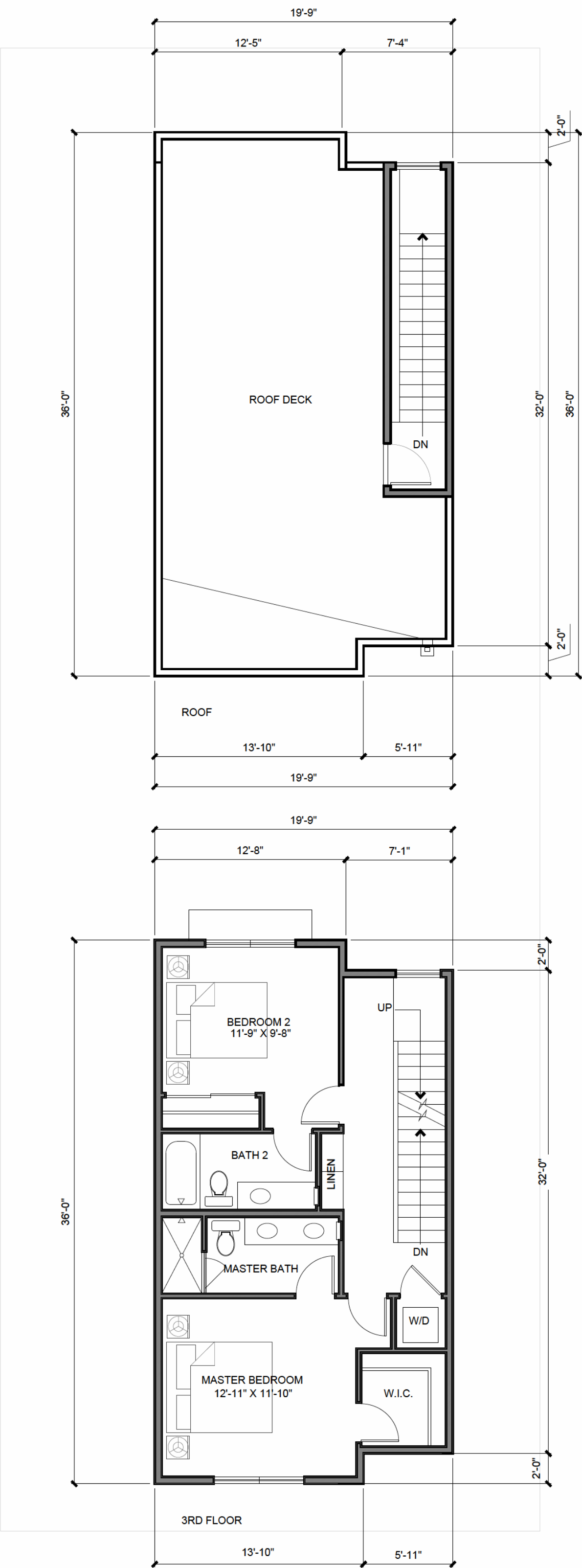
SCALE 3/16" = 1'-0"



UNIT A1 - 2 BED / 3 BATH

1ST FLOOR: 224 SF.  
2ND FLOOR: 611 SF.  
3RD FLOOR: 637 SF.  
TOTAL LIVING: 1,472 SF.  
BALCONY: 74 SF.  
GARAGE: 407 SF.

SCALE 3/16" = 1'-0"



03/01/19 **3** CYCLE 4: SUBMITTAL GK  
11/19/18 **2** CYCLE 3: SUBMITTAL GK  
08/16/18 **1** CYCLE 2: SUBMITTAL GK

0 1 2 5 10

SCALE 3/16" = 1'-0"

March 1, 2019

City of Roseville Approval

**kuchman**

**C&P**  
DEVELOPMENT  
L.L.C.

**Roseville Old Town Lofts**  
Roseville, California

UNIT PLANS

**A2.3**