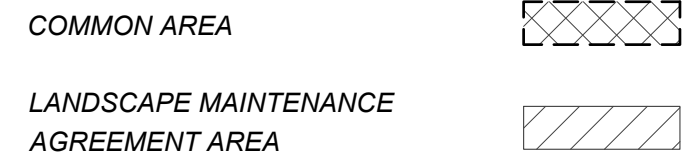


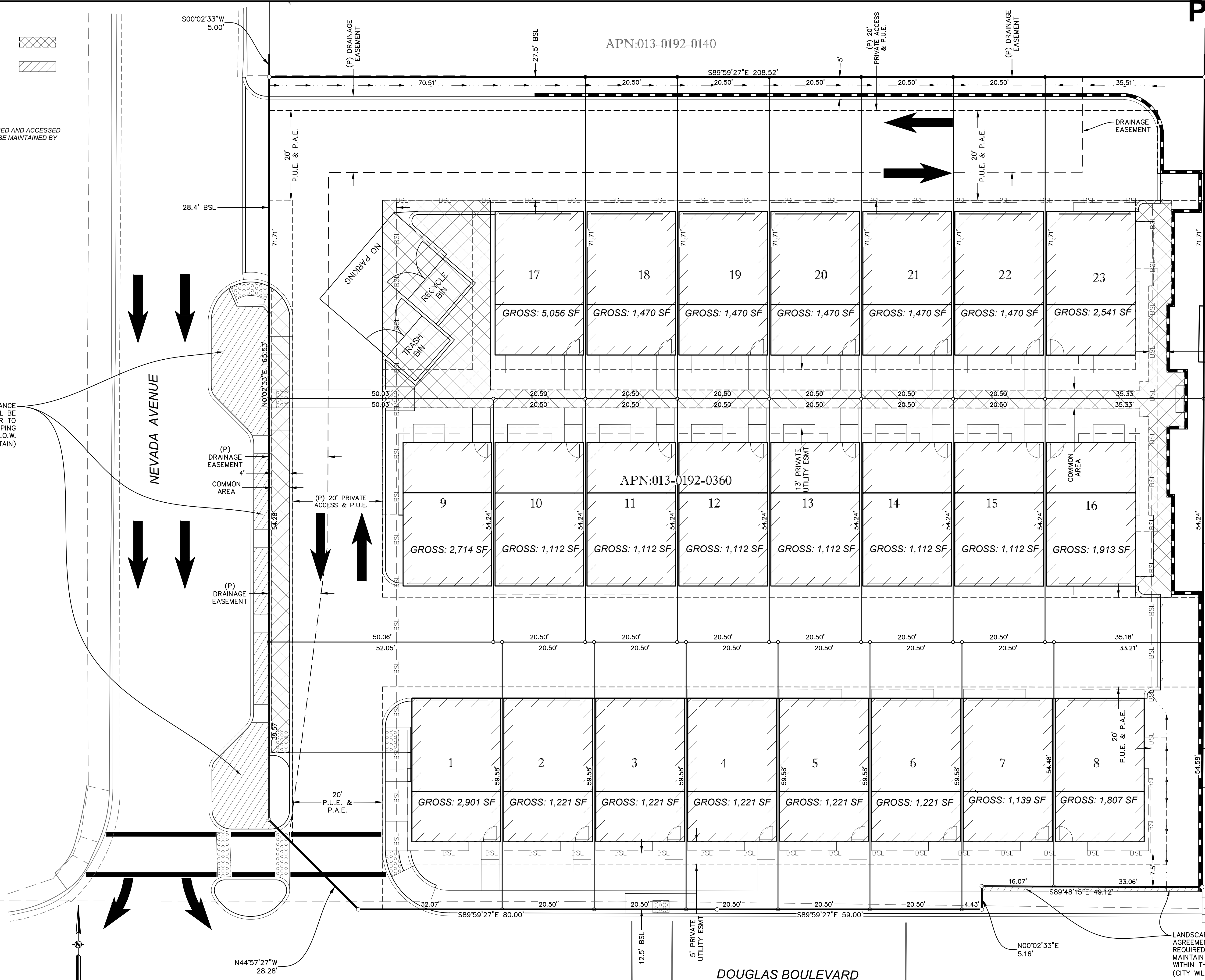
LEGEND:



NOTE:

THE COMMON AREA WILL BE USED AND ACCESSED BY THE COMMUNITY AND WILL BE MAINTAINED BY AN HOA.

LANDSCAPE MAINTENANCE AGREEMENT WILL BE REQUIRED FOR OWNER TO MAINTAIN LANDSCAPING WITHIN THE PUBLIC R.O.W. (CITY WILL NOT MAINTAIN)



APN:013-0192-0140

APN:013-0192-0070

APN:013-0192-0080

APN:013-0192-0090

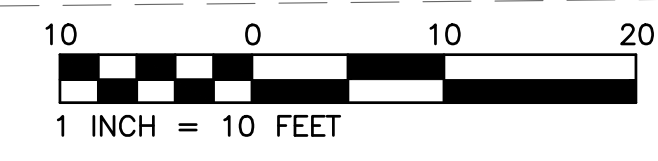
APN: 013-0192-0320

APN:013-0192-0060

APPROVED	DATE	BY
REVISION	CHECK NO.	BY
DESIGN	TSM	RFE
DRAWN	TSM	RFE
QUANT.	0	1
	0	2
ORIGINAL SCALE IS IN INCHES		
C&P ENGINEERING, INC. 2410 Douglas Blvd., Suite 160, Roseville, CA 95678 Ph: 916-772-7800 Fax: 916-772-7804 www.CPEngineering.com		
C&P DEVELOPMENT CONTACT: KARLTON CASTLES / ROBERT PEGOS 916-218-0728 / 916-764-4201		
ROSEVILLE OLD TOWN LOFTS 241 NEVADA AVENUE ROSEVILLE, CA PRELIMINARY LOT LAYOUT		
Drawing	Sheet	
of	of Total	
	9	TM-02
04-02-2019		



Know what's below. Call before you dig. or (800) 227-2600



7:\2018 Projects\18019_1007_Douglas Tent Map\WORKING CAD\PRELIMINARY\1-2_Preliminary Lot Layout.dwg Apr 02 2019 11:26 am

RFE PROJECT 18019 - ROSEVILLE OLD TOWN LOFTS, 241 NEVADA AVENUE, ROSEVILLE, CA