

PRELIMINARY GRADING AND DRAINAGE PLAN
MOURIER M31 APARTMENTS

PARCEL 31 OF MOURIER 140 LARGE LOT MAP
U MAPS 80

City of Roseville,

State of California

SEPTEMBER, 2019
REVISED DECEMBER 3, 2019
REVISED DECEMBER 31, 2019
REVISED MARCH 9, 2020
REVISED APRIL 22, 2020

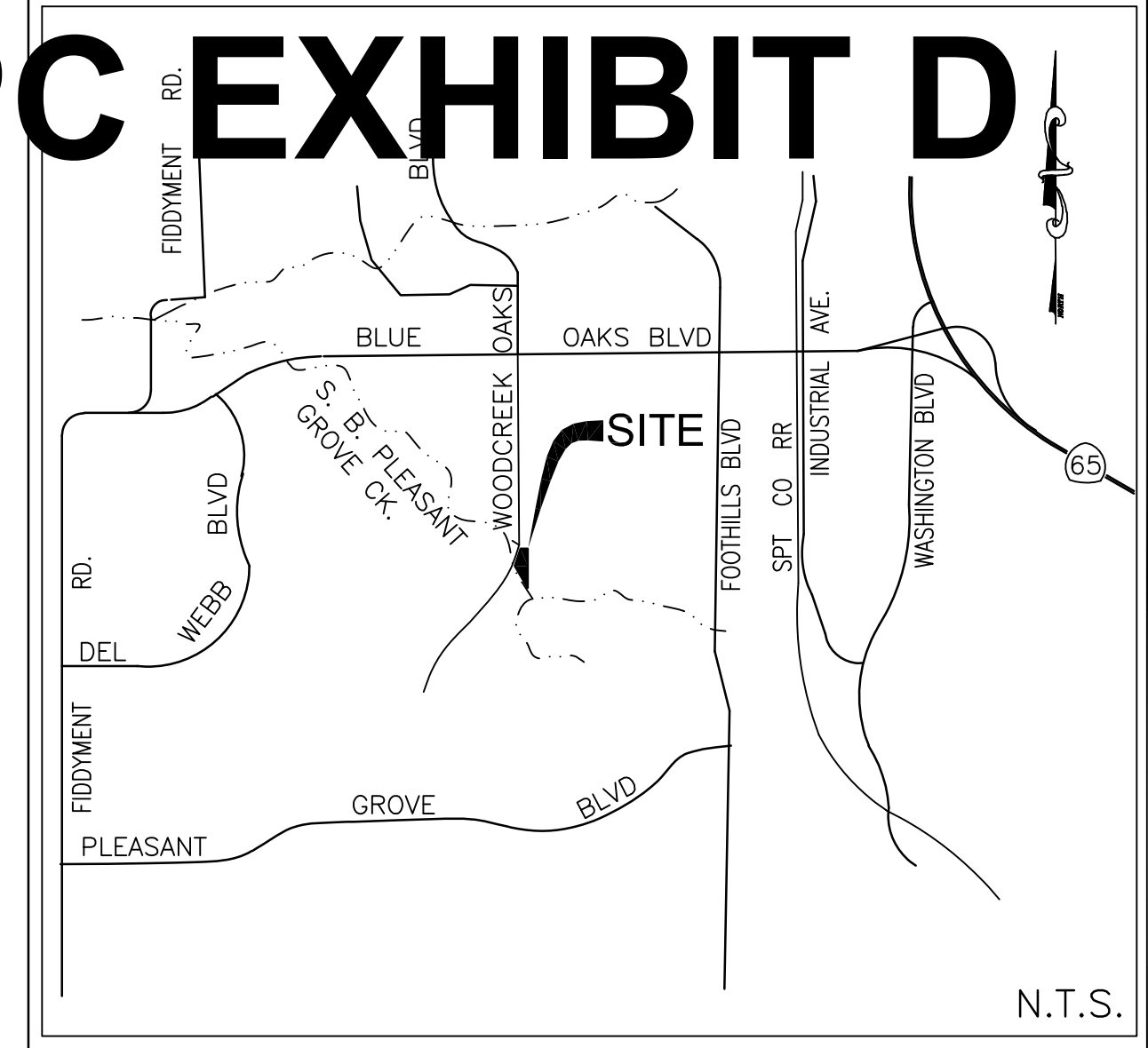
BAKER WILLIAMS ENGINEERING GROUP

Project Address -9000 WOODCREEK OAKS BOULEVARD

File No. - PL19-0317

NOTES: ALL TREES ON-SITE SHALL BE REMOVED.
SEE SHEET 3 FOR SECTIONS AND DETAILS.

PC EXHIBIT D



VICINITY MAP

OWNER/DEVELOPER:

JOHN MOURIER CONSTRUCTION, INC.
1430 BLUE OAKS BOULEVARD, SUITE 190
ROSEVILLE, CA 95747
PH. (916) 969-2842

ENGINEER:

BAKER-WILLIAMS ENGINEERING GROUP
6020 RUTLAND DRIVE, SUITE 19
CARMICHAEL, CALIFORNIA 95608
PH. (916) 331-4336

ASSESSOR'S PARCEL NUMBER:

481-010-008

ACREAGE:

4.1 GROSS ACRES ±

PROPOSED IMPROVEMENTS:

AS REQUIRED BY THE CITY OF ROSEVILLE
DEPARTMENT OF PUBLIC WORKS

PROPOSED NUMBER OF UNITS:

80 APARTMENT UNITS

EXISTING USE:

VACANT LAND

EXISTING ZONING:

COMMERCIAL

PROPOSED ZONING:

COMMERCIAL

SEWER:

CITY OF ROSEVILLE

WATER SUPPLY:

CITY OF ROSEVILLE

DRAINAGE:

CITY OF ROSEVILLE

FIRE PROTECTION:

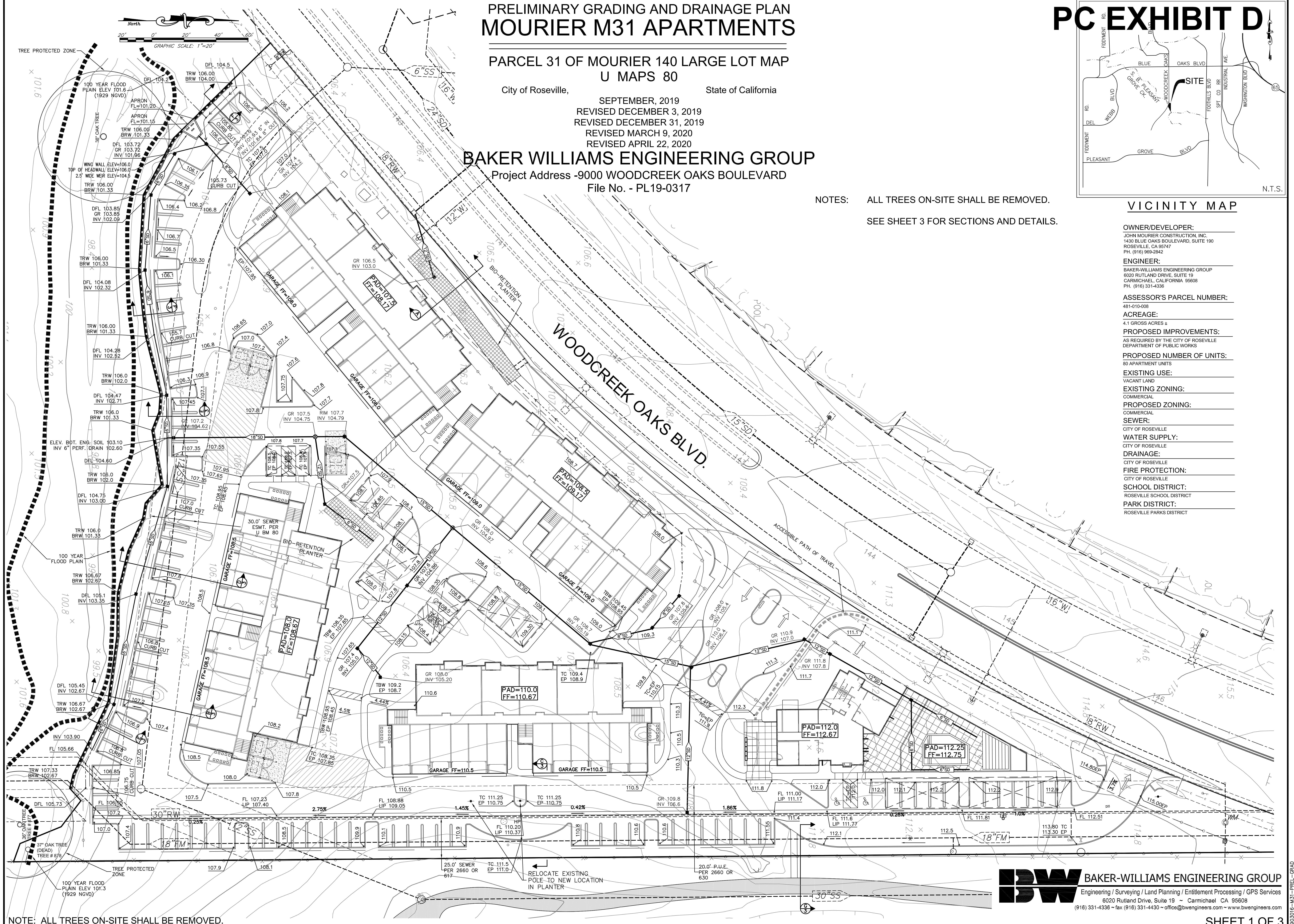
CITY OF ROSEVILLE

SCHOOL DISTRICT:

ROSEVILLE SCHOOL DISTRICT

PARK DISTRICT:

ROSEVILLE PARKS DISTRICT



NOTE: ALL TREES ON-SITE SHALL BE REMOVED.

BW BAKER-WILLIAMS ENGINEERING GROUP
Engineering / Surveying / Land Planning / Entitlement Processing / GPS Services
6020 Rutland Drive, Suite 19 ~ Carmichael, CA 95608
(916) 331-4336 ~ fax (916) 331-4430 ~ office@bwengineers.com ~ www.bwengineers.com

SECTIONS AND DETAILS
MOURIER M31 APARTMENTS

PARCEL 31 OF MOURIER 140 LARGE LOT MAP
U MAPS 80

City of Roseville,

State of California

SEPTEMBER, 2019
REVISED DECEMBER 3, 2019

BAKER WILLIAMS ENGINEERING GROUP

Project Address -9000 WOODCREEK OAKS BOULEVARD

File No. - PL19-0317

