

PRELIMINARY UTILITY PLAN MOURIER M31 APARTMENTS

PARCEL 31 OF MOURIER 140 LARGE LOT MAP
U MAPS 80

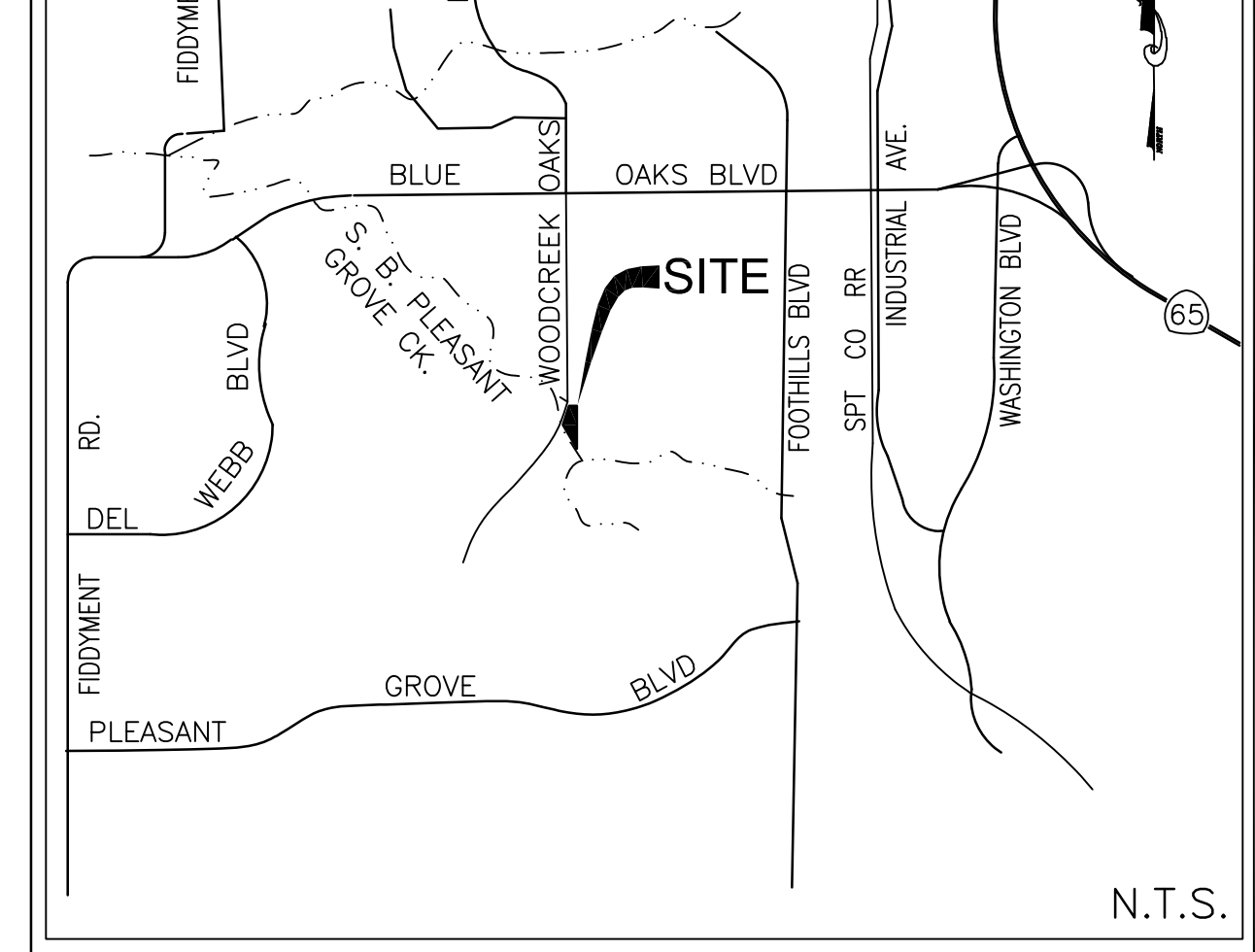
City of Roseville, State of California

SEPTEMBER, 2019
REVISED DECEMBER 3, 2019
REVISED MARCH 9, 2020
REVISED APRIL 22, 2020

BAKER WILLIAMS ENGINEERING GROUP

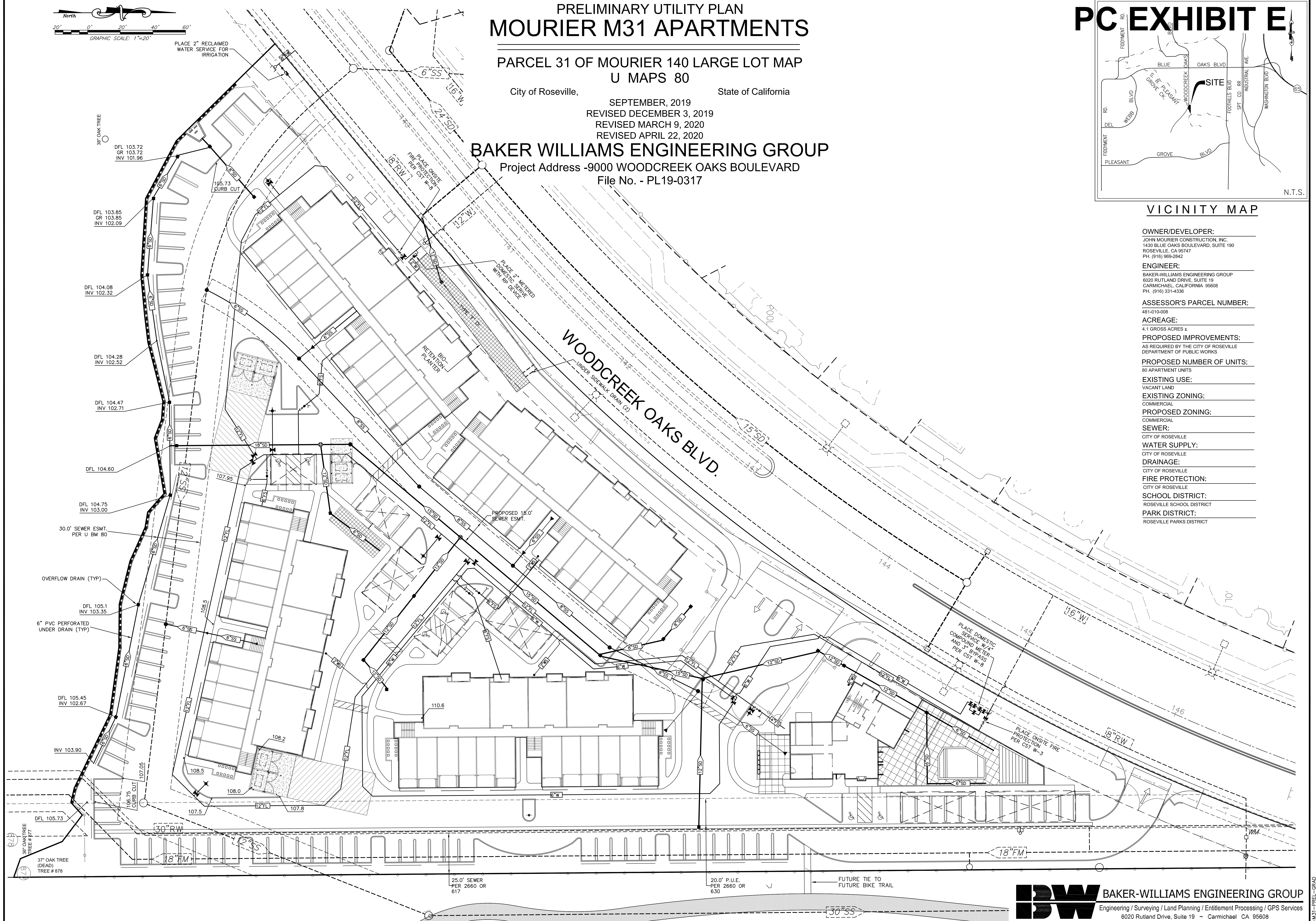
Project Address - 9000 WOODCREEK OAKS BOULEVARD
File No. - PL19-0317

PC EXHIBIT E



VICINITY MAP

- OWNER/DEVELOPER:
JOHN MOURIER CONSTRUCTION, INC.
1430 BLUE OAKS BOULEVARD, SUITE 190
ROSEVILLE, CA 95747
PH. (916) 969-2842
- ENGINEER:
BAKER-WILLIAMS ENGINEERING GROUP
6020 RUTLAND DRIVE, SUITE 19
CARMICHAEL, CALIFORNIA 95608
PH. (916) 331-4336
- ASSESSOR'S PARCEL NUMBER:
481-010-008
- ACREAGE:
4.1 GROSS ACRES ±
- PROPOSED IMPROVEMENTS:
AS REQUIRED BY THE CITY OF ROSEVILLE
DEPARTMENT OF PUBLIC WORKS
- PROPOSED NUMBER OF UNITS:
80 APARTMENT UNITS
- EXISTING USE:
VACANT LAND
- EXISTING ZONING:
COMMERCIAL
- PROPOSED ZONING:
COMMERCIAL
- SEWER:
CITY OF ROSEVILLE
- WATER SUPPLY:
CITY OF ROSEVILLE
- DRAINAGE:
CITY OF ROSEVILLE
- FIRE PROTECTION:
CITY OF ROSEVILLE
- SCHOOL DISTRICT:
ROSEVILLE SCHOOL DISTRICT
- PARK DISTRICT:
ROSEVILLE PARKS DISTRICT



NOTE: ALL TREES ON-SITE SHALL BE REMOVED.

BW BAKER-WILLIAMS ENGINEERING GROUP
Engineering / Surveying / Land Planning / Entitlement Processing / GPS Services
6020 Rutland Drive, Suite 19 ~ Carmichael CA 95608
(916) 331-4336 ~ fax (916) 331-4430 ~ office@bwengineers.com ~ www.bwengineers.com

S:\MWD\Jobs\2019\19-0317-Mourier-M31-Apartments\Planning\190317-M31-PREL-GRAD.dwg, 02-PREL LIT., 4/22/2020 3:06:11 PM, Drive Cobbs

1903016-M31-PREL-GRAD