

YAMASAKI
LANDSCAPE ARCHITECTURE

JEFF AMBROSIA, ASLA C4057

1223 HIGH STREET
AUBURN, CALIFORNIA 95603
(530) 885-0040
FAX (530) 885-0042
www.yamasaki-la.com

THE BELVEDERE
LANDSCAPE DEVELOPMENT PLANS
510 LINCOLN STREET
ROSEVILLE, CALIFORNIA

These drawings are instruments of service and are the property of Yamasaki Landscape Architecture. All designs and other information on the drawings are for the use on the specified project and shall not be used otherwise without the express written permission of Yamasaki Landscape Architecture.

Sheet Title
PLANTING PLAN

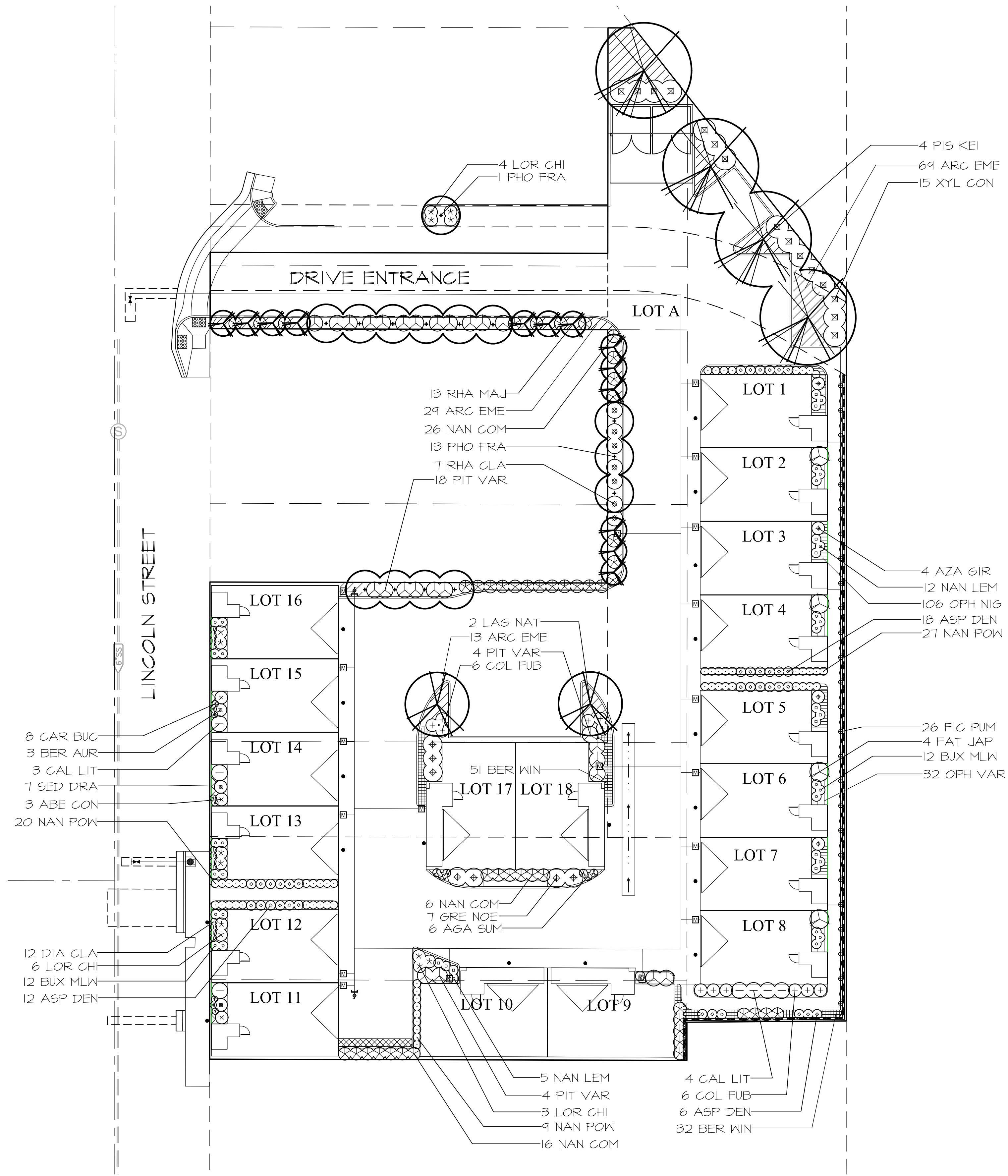


No.	Date	Revision
△		
△		
△		

Project Mgr.: JMA Sheet No.:
Drawn By: DS
Scale: 1"=20'-0" **L1.1**
Date: 2/2/20
File Name: RS-PL of 1 sheets

PLANT SCHEDULE

TREES	CODE	QTY	BOTANICAL / COMMON NAME	SIZE	
	LAG NAT	2	Lagerstroemia x 'Natchez' / Grape Myrtle	15 gal	
	PHO FRA	14	Photinia x fraseri / Red Tip Photinia Standard	15 gal	
	PIS KEI	4	Pistacia chinensis 'Keith Davey' / Keith Davey Chinese Pistache	15 gal	
	RHA MAJ	13	Rhaphiolepis indica 'Majestic Beauty' / Majestic Beauty Indian Hawthorne Standard	15 gal	
SHRUBS	CODE	QTY	BOTANICAL / COMMON NAME	SIZE	
	ABE CON	3	Abelia x grandiflora 'Confetti' / Variegated Glossy Abelia	5 gal	
	AGA SUM	6	Agapanthus africanus 'Summer Gold' / Summer Gold Agapanthus	5 gal	
	AZA GIR	4	Azalea x 'Girard's Rose' / Girard's Rose Azalea	5 gal	
	BER AUR	3	Berberis thunbergii 'Aurea Nana' / Japanese Barberry	5 gal	
	BUX MLW	24	Buxus microphylla 'Golden Dream' / Golden Dream Boxwood	5 gal	
	CAL LIT	7	Callistemon viminalis 'Little John' / Dwarf Weeping Bottlebrush	5 gal	
	COL FUB	12	Coleonema pulchellum 'Sunset Gold' / Sunset Gold Breath of Heaven	5 gal	
	FAT JAP	4	Fatsia japonica / Japanese Fatsia	5 gal	
	GRE NOE	7	Grevillea x 'Noellii' / Grevillea	5 gal	
	LOR CHI	13	Loropetalum chinense 'Purple Pixie' / Purple Pixie Loropetalum	5 gal	
	NAN COM	48	Nandina domestica 'Compacta' / Dwarf Heavenly Bamboo	5 gal	
	NAN POW	56	Nandina domestica 'Fire Power' / Firepower Nandina	5 gal	
	NAN LEM	17	Nandina domestica 'Lemon Lime' / Lemon Lime Nandina	5 gal	
	PIT VAR	26	Pittosporum tobira 'Variegata' / Variegated Mock Orange	5 gal	
	RHA CLA	7	Rhaphiolepis indica 'Clara' / Clara Indian Hawthorn	5 gal	
	XYL CON	15	Xylosma congestum / Shiny Xylosma	5 gal	
PERENNIALS	CODE	QTY	BOTANICAL / COMMON NAME	SIZE	
	ASP DEN	36	Asparagus densiflorus 'Myers' / Myers Asparagus	1 gal	
	CAR BUC	8	Carex buchananii / Curly Top Sedge	1 gal	
	DIA CLA	12	Dianella x 'Clarity Blue' / Clarity Blue Dianella	1 gal	
VINES	CODE	QTY	BOTANICAL / COMMON NAME	SIZE	
	FIG PUM	26	Ficus pumila / Creeping Fig	1 gal	
GROUND COVERS	CODE	QTY	BOTANICAL / COMMON NAME	SIZE	SPACING
	ARC EME	111	Arctostaphylos uva-ursi 'Emerald Carpet' / Emerald Carpet Manzanita	1 gal	36" o.c.
	BER WIN	83	Bergenia cordifolia 'Winterglut' / Winterglow Heartleaf Bergenia	1 gal	18" o.c.
	OPH VAR	32	Ophiopogon japonicus / Mondo Grass	1 gal	18" o.c.
	OPH NIG	106	Ophiopogon planiscapus 'Nigrescens' / Black Mondo Grass	1 gal	12" o.c.
	SED DRA	7	Sedum spurium 'Dragon's Blood' / Two Row Stone Crop	1 gal	24" o.c.



IRRIGATION STATEMENT

The irrigation design will consist of low volume point source drip irrigation. Overhead spray and rotator type irrigation heads are discouraged. Proposed trees shall utilize bubbler irrigation to encourage deep root watering. The overall irrigation system will be designed with a smart irrigation controller. A weather sensor will be used to automatically adjust duration of application in accordance with recent weather conditions based on evapotranspiration. Maximum water allowance will be determined by State code. To also be consistent with the planting design, the irrigation design shall incorporate hydrozones by locating plants of different water needs into groups for ease of water application.

PARKING LOT SHADE CALCULATIONS

TREE SYMBOL	100%	75%	50%	25%
LAG NAT.			2 (157) = 314	
PIS KEI.	1 (962) = 962		2 (481) = 962	
TOTAL PAVED AREA	2,430 s.f.			
SHADE REQUIRED	1,215 s.f.			
SHADE PROVIDED	2,238 s.f.			
PERCENT SHADE	92%			

