

ELEVATIONS AND DETAILS PARCEL W20 COFFEE SHOP

PC EXHIBIT K

LOT 15 OF WESTPARK PHASE 1 LARGE LOT MAP
AA MAPS 4

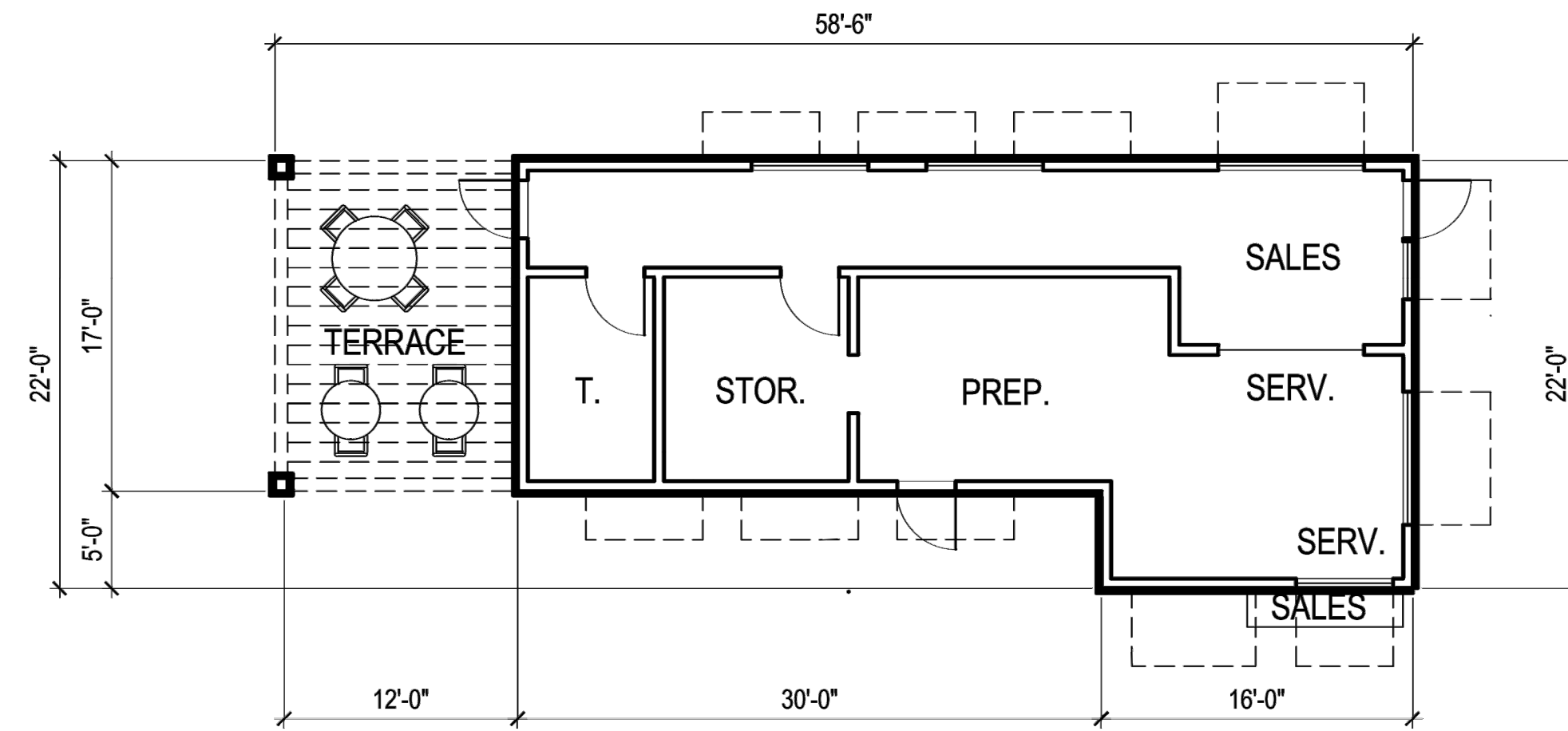
City of Roseville, State of California

OCTOBER, 2020

BAKER WILLIAMS ENGINEERING GROUP

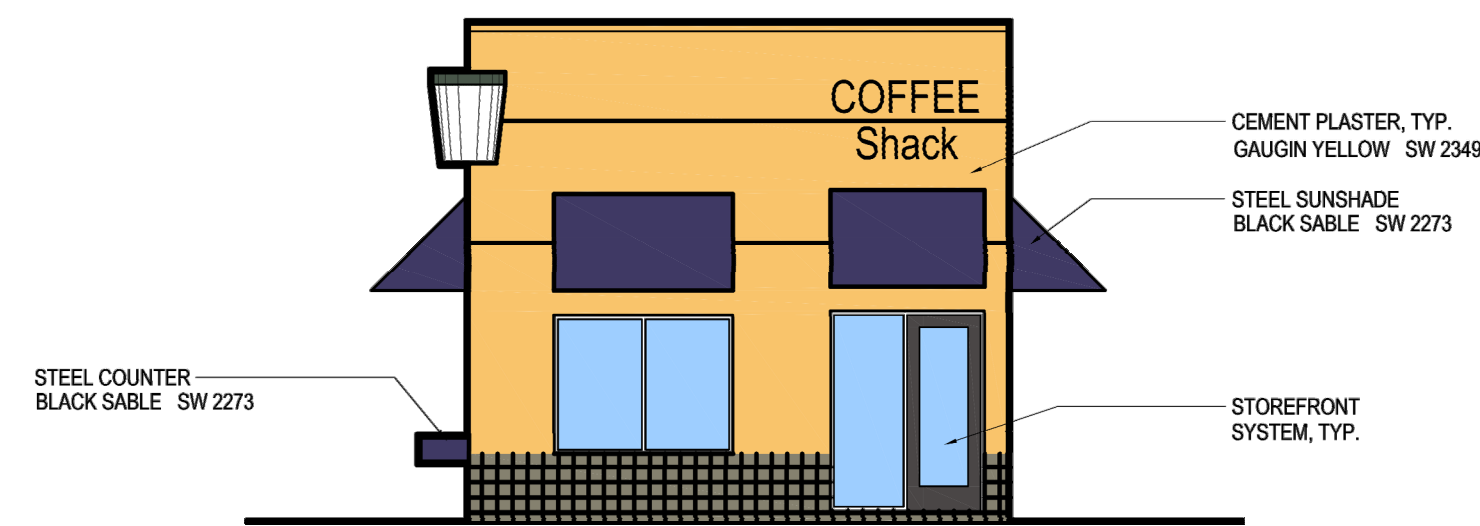
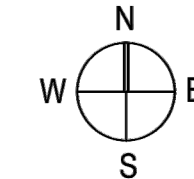
Project Address - 1875 PLEASANT GROVE BOULEVARD

File No. - PL20-0142



FLOOR PLAN

1" = 10'-0"



WEST

1" = 10'-0"



NORTH

1" = 10'-0"



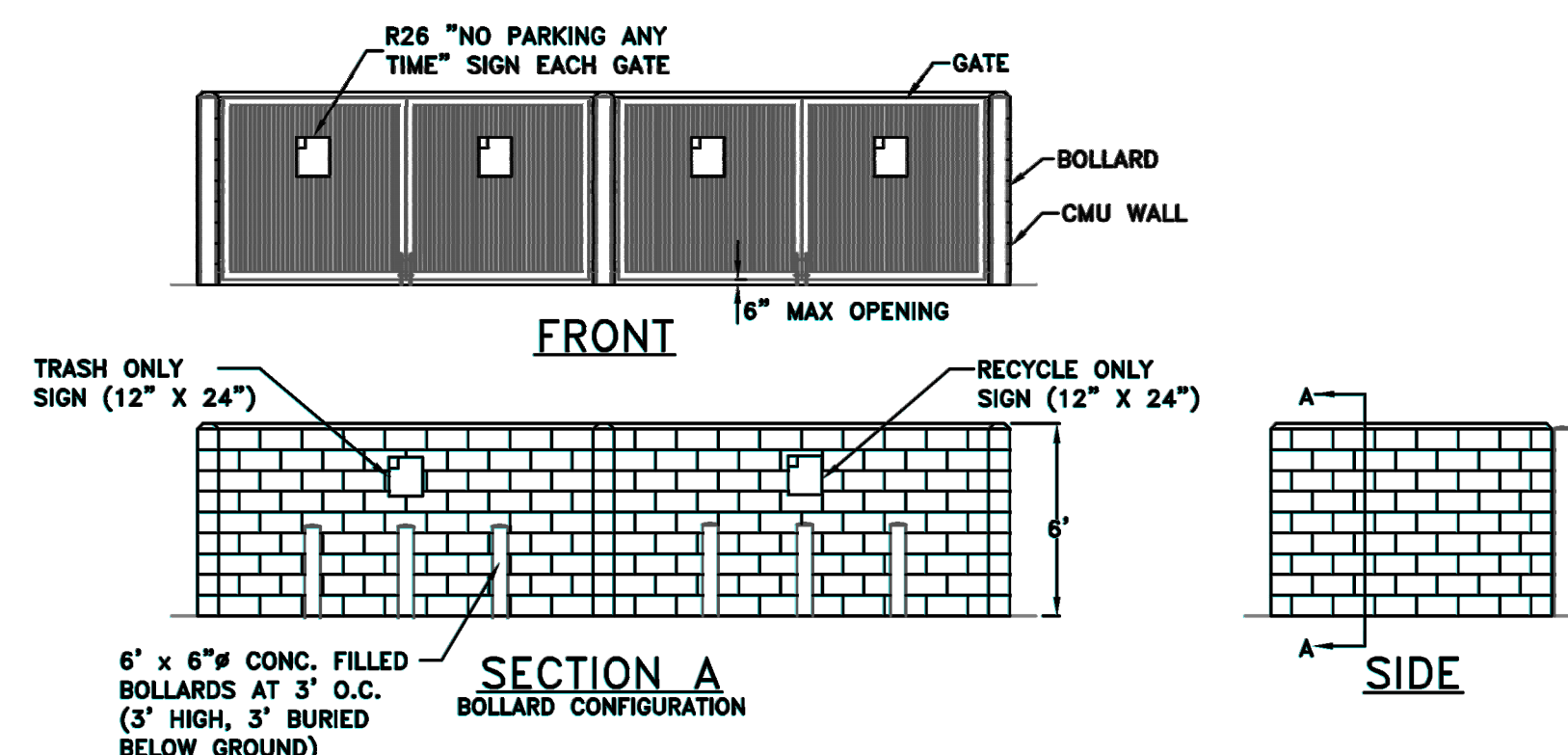
EAST

1" = 10'-0"



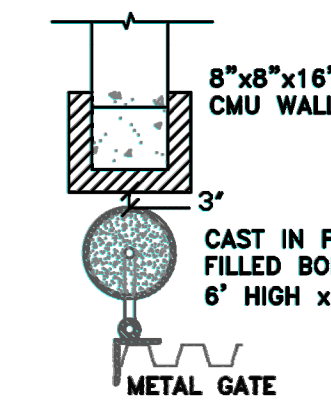
SOUTH

1" = 10'-0"



NOTES:

1. SINGLE ENCLOSURE IS 12' WIDE (INTERIOR)
2. THE EXTERIOR FINISH AND COLOR OF THE ENCLOSURE SHALL MATCH THE BUILDING PER THE DESIGN REVIEW PERMIT EXHIBITS AND/OR CONDITIONS OF APPROVAL
3. GREASE/TALLOW BIN ENCLOSURE MAY BE ATTACHED TO THE TRASH ENCLOSURE OR BE CONSTRUCTED SEPARATELY. THE GREASE/TALLOW BIN MUST NOT BE LOCATED WITHIN THE TRASH/RECYCLING ENCLOSURE.



BOLLARD GATE DETAIL

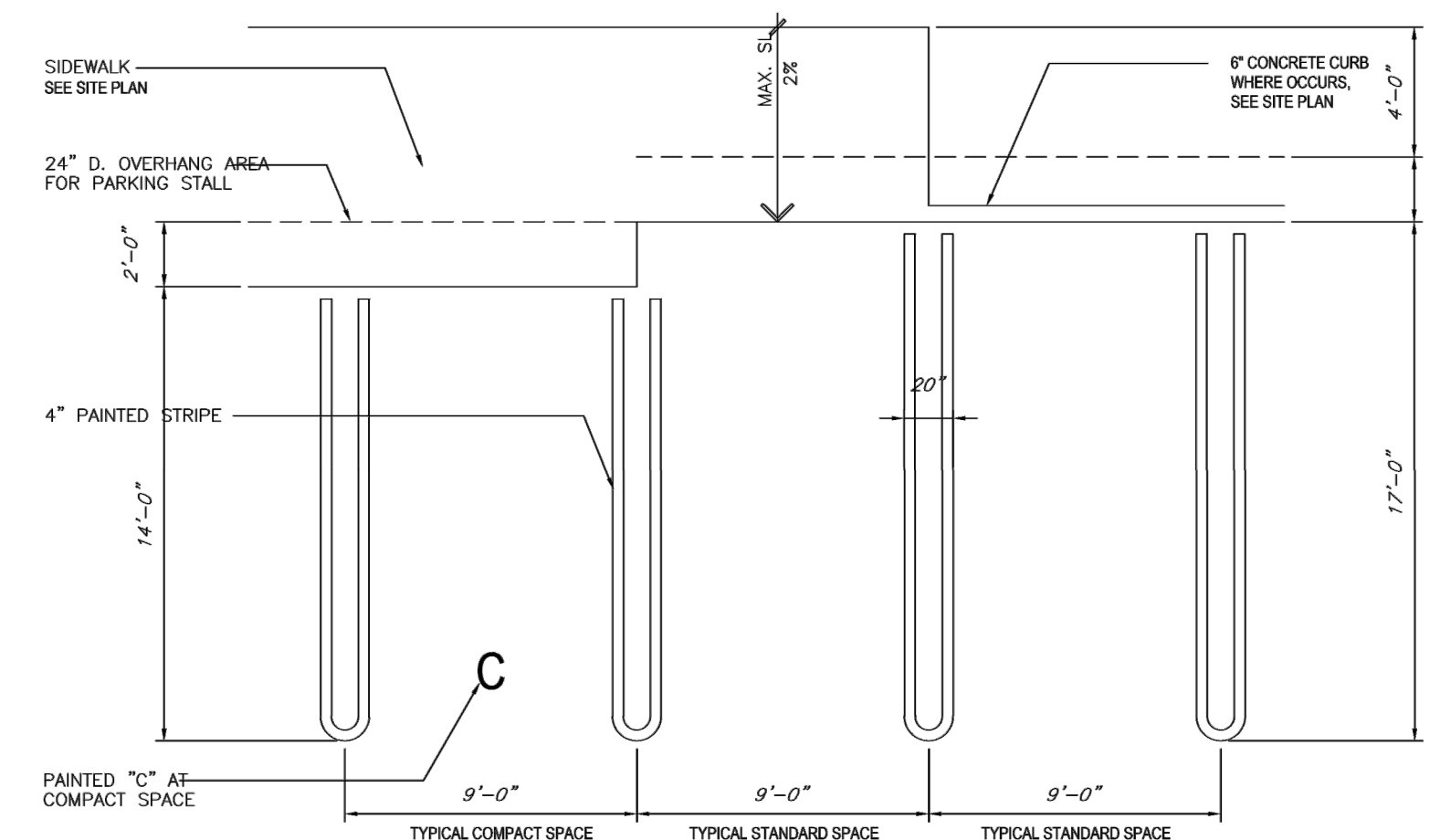
Richard D. Plecker
RICHARD PLECKER
ENVIRONMENTAL UTILITIES DIRECTOR

CITY OF ROSEVILLE CALIFORNIA ENVIRONMENTAL UTILITIES DEPARTMENT

STANDARD TRASH ENCLOSURE

SCALE: NONE
REVISED: JANUARY 2018
DRAWN BY: R. VAN NESS
APPROVED BY: RICHARD PLECKER

SW-1



11 STANDARD AND COMPACT PARKING STALL STRIPING
NO SCALE



Mown Grass – SW 2377



Gaugin Yellow – SW 2349



Torrey Pine – SW 2384



Black Sable – SW 2273



Cultured Stone – Coral Stone – Fossil Relief