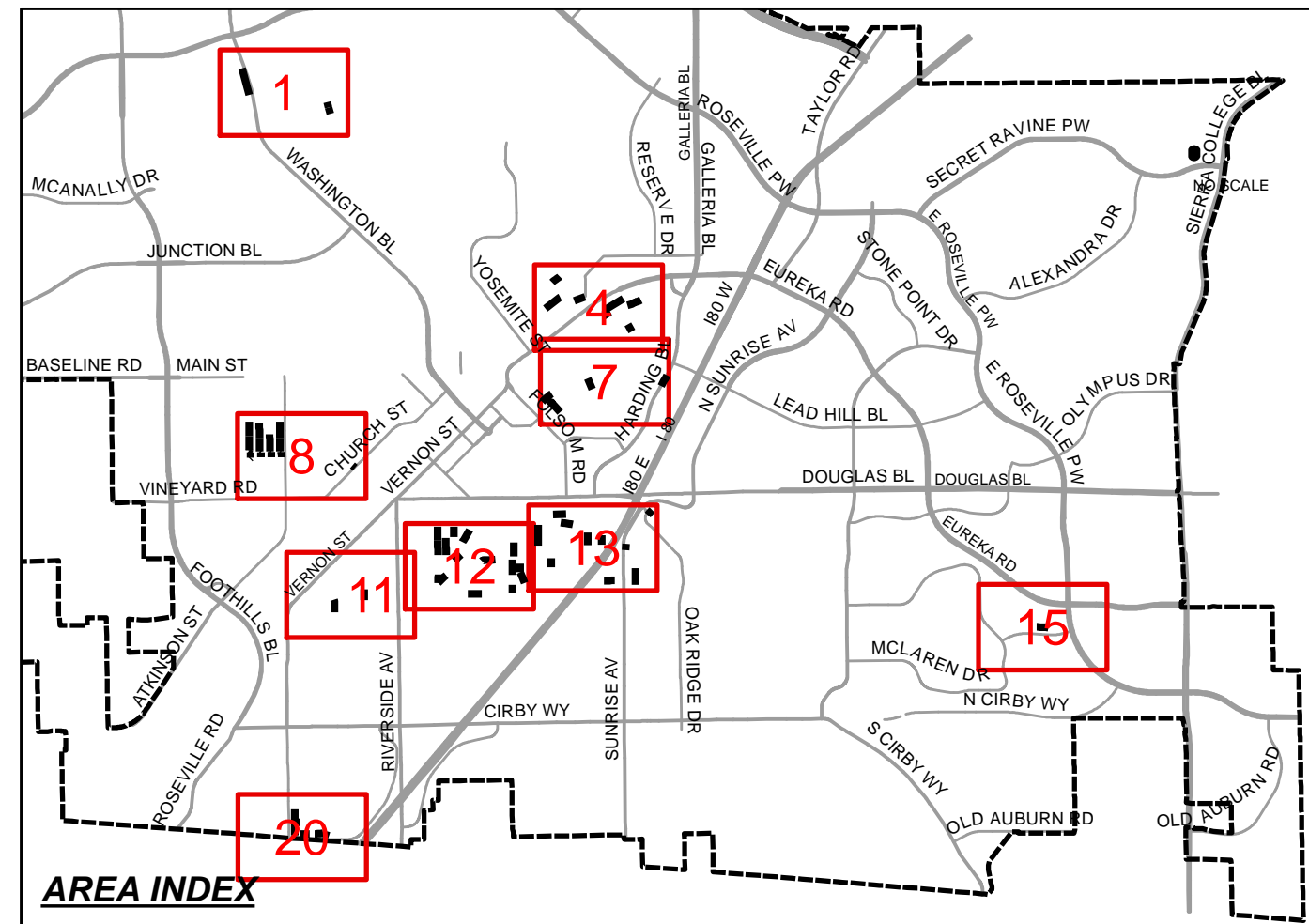
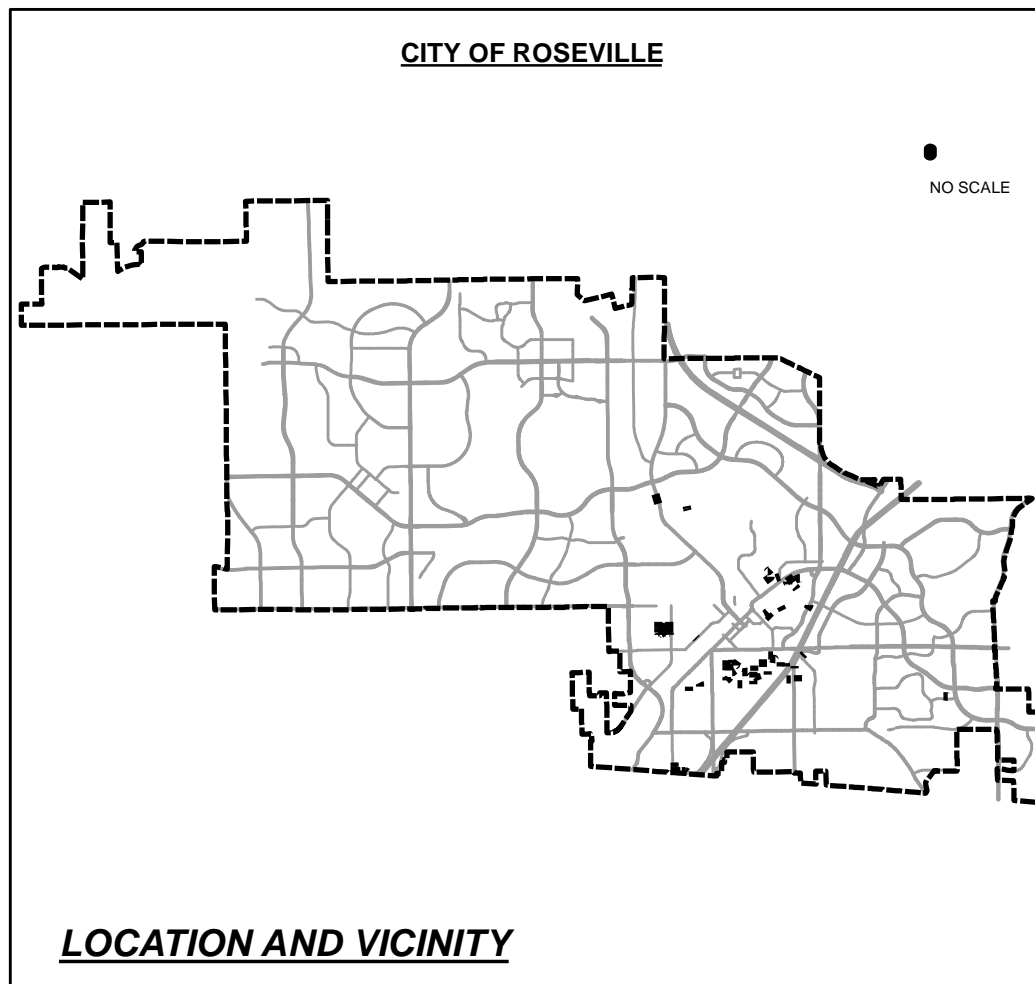


City of Roseville

2021 Sewer Collection System CIPP Rehabilitation Project

TABLE OF CONTENTS	
PAGE	TITLE
1.	COVER SHEET
2.	PROJECT NOTES
3.	PIPE SEGMENT DETAIL TABLE 1
4.	PIPE SEGMENT DETAIL TABLE 2
5.	AREA 1
6.	AREA 4
7.	AREA 7
8.	AREA 8
9.	AREA 11
10.	AREA 12
11.	AREA 13
12.	AREA 15
13.	AREA 20



APPROVALS

SUBMITTED *Jonathan Cummings*
 JONATHAN CUMMINGS, ASSOCIATE ENGINEER

APPROVED *Tracie R Mueller*
 TRACIE MUELLER, SENIOR ENGINEER

APPROVED *Richard D. Plecker*
 RICHARD PLECKER, EU DIRECTOR

APPROVED *Marc Stout*
 MARC STOUT, CITY ENGINEER



UTILITY CONTACTS			
Utility	Agency	Contact	Phone
Cable TV	Comcast	Gary or Steve Abelia	(916) 830-6732
Electric	Roseville Electric	Joesph McKinney	(916) 774-5691
Fiber Optic/Telephone	Consolidated Communications	Anthony Nolasco	(916) 675-6370
Fire	City of Roseville	Jason Rizzi	(916) 774-5802
Gas	PG&E Gas Engineering	Nicholas Morlock	(916) 760-5737
Petroleum	Kinder Morgan Gas	Steve Osborn	(916) 624-2431
Storm Drain	City of Roseville	Development Services	(916) 774-5539
Wastewater	City of Roseville	Daniel Pruden	(916) 746-1898
Water	City of Roseville	Mike Simi	(916) 774-5513

DESIGNED BY: JC	DATE: JANUARY 2021
DRAWN BY: JMH	
APPROVED BY: TM	
REVISIONS:	COMMENTS:



PUBLIC IMPROVEMENTS REQUIREMENTS

GENERAL:

1. ALL CONSTRUCTION AND MATERIALS SHALL CONFORM TO THESE PLANS AND THE LATEST EDITION AND AMENDMENTS OF THE CITY OF ROSEVILLE DESIGN AND CONSTRUCTION STANDARDS.
2. THE CITY OF ROSEVILLE IS A MEMBER OF THE UNDERGROUND SERVICE ALERT (U.S.A.) ONE-CALL SYSTEM. THE CONTRACTORS SHALL NOTIFY THE U.S.A. CENTER 48 HOURS IN ADVANCE OF PERFORMING ANY EXCAVATION WORK BY CALLING 1-800-227-2600.
3. THE CONTRACTOR SHALL MARK IN WHITE PAINT ALL AREAS TO BE EXCAVATED PRIOR TO CONTACTING U.S.A. ANY AREAS NOT MARKED WILL NOT BE SUBJECT TO U.S.A., AND THE CONTRACTOR SHALL BE RESPONSIBLE FOR ANY DAMAGE RESULTING FROM EXCAVATION.
4. THE CONTRACTOR SHALL EXPOSE AND VERIFY LOCATIONS AND ELEVATIONS OF EXISTING UNDERGROUND UTILITIES PRIOR TO CONSTRUCTION OF THE NEW IMPROVEMENTS CONNECTING TO OR IN THE VICINITY OF THE SAME.
5. THE CONTRACTOR SHALL BE RESPONSIBLE FOR THE PROTECTION OF ALL EXISTING MONUMENTS AND OTHER SURVEY MARKERS ON THE JOB SITE.
6. ANY A.C. SURFACE TO BE REMOVED SHALL BE CUT TO A NEAT, STRAIGHT LINE PARALLEL WITH THE STREET CENTERLINE AND THE EXPOSED EDGE SHALL BE TACKED WITH EMULSION PRIOR TO PAVING. THE EXPOSED BASE MATERIAL SHALL BE GRADED, RE-COMPACTED, AND RESEALED PRIOR TO PAVING.
7. ANY EXISTING CONCRETE SURFACE TO BE REMOVED SHALL BE SAW CUT TO A NEAT, STRAIGHT LINE.
8. THE CONTRACTOR SHALL SUBMIT A TRAFFIC CONTROL PLAN THAT SHALL BE ACCEPTED BY THE ENGINEERING DIVISION OF PUBLIC WORKS BEFORE START OF WORK IN RIGHT-OF-WAY AND SHALL BE IN ACCORDANCE WITH CALIFORNIA MUTCD LATEST EDITION. AT LEAST ONE LANE IN EACH DIRECTION SHALL REMAIN OPEN TO TRAFFIC UNLESS OTHERWISE SHOWN ON THE PLANS. TRAFFIC CONTROL HOURS ARE SUBJECT TO LIMITATION BY THE CITY. TRAFFIC CONTROL WITH LANE CLOSURES THAT AFFECT TRAFFIC FLOW MAY REQUIRE NIGHT WORK. IF, AS A PART OF TRAFFIC CONTROL MEASURES, A ROADWAY CLOSURE HAS BEEN APPROVED, THE CONTRACTOR SHALL NOTIFY DEVELOPMENT SERVICES CONSTRUCTION INSPECTOR 72 HOURS IN ADVANCE OF SETTING UP THIS CLOSURE.
9. ALL UNDERGROUND UTILITIES WITHIN EXISTING OR PROPOSED CITY OF ROSEVILLE EASEMENTS SHALL REQUIRE A MINIMUM OF 90% COMPACTION ON THE TRENCH BACKFILL. COMPACTION OF BACKFILL BY JETTING IS NOT PERMITTED IN CITY OF ROSEVILLE RIGHT OF WAY AND EASEMENT AREAS OR WITHIN DEDICATED RECLAIMED WATER, STORM, SEWER OR WATER EASEMENTS AND MAINS.
10. THE CONTRACTOR SHALL CONDUCT A PRE-CONSTRUCTION MEETING ONE-WEEK PRIOR TO STARTING WORK. MEMBERS OF THE CITY OF ROSEVILLE DEVELOPMENT SERVICES DEPARTMENT, ENVIRONMENTAL UTILITIES DEPARTMENT AND ALL OTHER UTILITY REPRESENTATIVES SHALL BE NOTIFIED BY THE CONTRACTOR AS TO THE DATE AND LOCATION OF THE MEETING.

11. PRIOR TO EXCAVATION OF TRENCHES 5 FEET OR DEEPER, THE CONTRACTOR SHALL SUBMIT A COPY OF THE COMPANY'S ANNUAL CALOSHA TRENCHING PERMIT AND A COPY OF THE COMPANY'S LETTER INFORMING CALOSHA OF THE TIME THE TRENCHING IS COMMENCING AND THE LOCATION OF THE WORK.
12. ALL PAINTED TRAFFIC STRIPES, ARROWS, AND PAVEMENT MARKINGS SHALL BE CONSTRUCTED WITH THERMOPLASTIC MATERIAL TO THE SPECIFICATIONS SET FORTH IN CHAPTER 3 OF THE CALIFORNIA MUTCD LATEST EDITION. NON-REFLECTIVE PAVEMENT MARKERS SHALL CONSIST OF CERAMIC MARKERS ONLY CONFORMING TO CHAPTER 3 OF THE CALIFORNIA MUTCD LATEST EDITION.
13. THE CONTRACTOR SHALL TAKE EXTREME CARE TO PROTECT EXISTING SITE AND ADJACENT IMPROVEMENTS FROM DAMAGE. THE CONTRACTOR SHALL BE RESPONSIBLE TO REPAIR OR MAKE REPLACEMENT OF ALL CRACKED AND OTHERWISE PRE-EXISTING DAMAGED PUBLIC IMPROVEMENTS ALONG THE FRONTAGE OF THE PROJECT SITE AND ANY DAMAGE RESULTING FROM CONSTRUCTION TO CURRENT CITY STANDARDS AND AT THEIR OWN EXPENSE. THE EXTENT OF THE REPAIRS SHALL BE DETERMINED BY THE DEVELOPMENT SERVICES CONSTRUCTION INSPECTOR AND SHALL BE COMPLETED PRIOR TO THE CITY ACCEPTANCE OF THE IMPROVEMENTS.
14. WHEN SAWCUTTING WITHIN THE STREET FOR TRENCHING OR OTHER PURPOSES, CONTRACTOR SHALL GRIND 1½" OF PAVEMENT BETWEEN THE LANE LINES (FROM LANE STRIPE TO LANE STRIPE) UPON COMPLETION OF THE SAWCUTTING AND OR TRENCHING WORK. WHERE THE SAWCUTTING OCCURS BETWEEN THE CURB AND GUTTER AND NEAREST LANE STRIPE (INCLUDING BIKE LANES), THE SAME 1 ½" GRIND SHALL BE REQUIRED. CONTRACTOR TO PLACE A PETROMAT FABRIC OR APPROVED EQUAL BY THE CITY OF ROSEVILLE AND OVERLAY FROM LANE STRIPE TO LANE STRIPE, OR CURB TO LANE STRIPE AND RESTRIPE OR REPLACE ANY DELINEATORS REMOVED DURING THE GRIND.

SPECIAL NOTES:

1. THE 2021 SEWER COLLECTION SYSTEM CIPP REHABILITATION SHALL CONFORM TO THE 2021 SEWER COLLECTION SYSTEM CIPP REHABILITATION PROJECT CONTRACT DOCUMENTS.
2. THE CONTRACTOR SHALL BE RESPONSIBLE TO REPAIR OR MAKE REPLACEMENT OF DAMAGED PRIVATE PROPERTY IMPROVEMENTS RESULTING FROM CONSTRUCTION AT THEIR OWN EXPENSE. THE EXTENT OF THE REPAIRS SHALL BE DETERMINED BY THE CONSTRUCTION INSPECTOR AND SHALL BE COMPLETED PRIOR TO THE CITY ACCEPTANCE OF THE IMPROVEMENTS.

REV NO	DATE	DRAWN	CHKD	COMMENTS

DESIGNED BY: JC
 DRAWN BY: JMH
 APPROVED BY: TM
 DATE: JANUARY 2021



ENVIRONMENTAL UTILITIES
 ENGINEERING DIVISION

City of Roseville
 2021 Sewer Collection System CIPP Rehabilitation Project

Project Notes

FROM	UPSTREAM ID	UPSTREAM DEPTH (FT)	TO	DOWNSTREAM ID	DOWNSTREAM DEPTH (FT)	FLOWS (MGD) See Note 1	STREET NAME/MAIN LOCATION	EXISTING DIAMETER (IN)	EXISTING MATERIAL	REPAIR LENGTH (FT)	# OF LATERALS	AREA	PLAN NOTES
SMH	D04-018	6.5	SMH	D04-442	5.25	0.0585	WASHINGTON BL	15	VCP	646.1	0	1	13
SMH	D04-055	7.16	SMH	D04-041	4.2	0.0146	JENNIFER CI	6	VCP	133.6	0	1	
SMH	D04-064	3.3	SMH	D04-055	7.2	0.0095	JENNIFER CI	6	VCP	148.7	0	1	
SMH	C05-033	3.2	SMH	C05-039	5	0.0272	TIGER WY TO ROSEVILLE HS PARKING LOT EASEMENT	6	VCP	268.3	0	4	2
SMH	C05-035	2.06	SMH	C05-048	3.5	0.0562	ALLEY	6	UV CIPP	507.9	16	4	5, 12
SMH	C05-037	3.06	SMH	C05-045	4	0.0216	SHEARER ST	6	UV CIPP	335.9	7	4	5
SMH	C05-057	4	SMH	C05-048	3	0.0642	CENTER ST	6	UV CIPP	198	2	4	5
SMH	C05-066	2.5	SMH	C05-062	3.06	0.0121	EASEMENT BETWEEN PARRY ST & AL	6	VCP	189.8	1	4	
FB	C05-434	N/A	SMH	C05-043	2.7	0.0186	ALLEY	6	UV CIPP	434.4	14	4	2, 5, 7, 8
SMH	C05-492	4.4	SMH	C05-019	6.2	0.0039	CAMPO ST TO ALLEY	6	VCP	228	6	4	2
SMH	C05-144	16.4	SMH	C05-133	12.7	0.0156	JAMES DR	6	UV CIPP	279.2	7	7	5, 12
SMH	C05-152	5	SMH	C05-167	8	0.0065	ALLEY	6	UV CIPP	284.7	4	7	5
SMH	C05-168	2	SMH	C05-184	7.07	0.0073	ALLEY	6	UV CIPP	313.5	8	7	5
SMH	C06-077	9	SMH	C06-083	22.09	0.0063	HARDING BL	6	VCP	295.5	4	7	
SMH	C04-151	3	SMH	C04-175	4.8	0.0237	BACKYARD EASEMENT OFF AMBERWOOD RD	6	VCP	336.5	6	8	4
SMH	C04-153	6.1	SMH	C04-247	4.1	0.0271	BACKYARD EASEMENT OFF ATKINSON ST	6	VCP	390.3	13	8	4, 7
SMH	C04-165	6.1	SMH	C04-176	6.1	0.376	BACKYARD EASEMENT OFF BRENTWOOD RD	6	VCP	355.3	11	8	4, 7
SMH	C04-175	4.8	SMH	C04-192	5.1	0.0404	BACKYARD EASEMENT OFF AMBERWOOD RD	6	VCP	322.7	6	8	4
SMH	C04-176	6.1	SMH	C04-193	7.1	0.0544	BACKYARD EASEMENT OFF BRENTWOOD RD	6	VCP	305.1	11	8	4
SMH	C04-177	7.1	SMH	C04-194	10.1	0.0282	BACKYARD EASEMENT OFF BROOKWOOD RD	6	VCP	401.3	13	8	4
SMH	C04-178	3.5	SMH	C04-224	9.8	0.0244	FIG ST	6	VCP	80.8	0	8	
SMH	C04-191	5.1	SMH	C04-199	4.3	0.045	BACKYARD EASEMENT OFF AMBERWOOD RD	6	VCP	54.1	0	8	4
SMH	C04-192	5.1	SMH	C04-191	5.1	0.0419	BACKYARD EASEMENT OFF AMBERWOOD RD	6	VCP	26.4	1	8	4
SMH	C04-193	7.1	SMH	C04-200	8	0.0557	BACKYARD EASEMENT OFF BRENTWOOD RD	6	VCP	32.6	0	8	4
SMH	C04-194	10.1	SMH	C04-201	9.1	0.0296	BACKYARD EASEMENT OFF BROOKWOOD RD	6	VCP	32.9	0	8	4
SMH	C04-195	7	SMH	C04-202	7	0.0418	BACKYARD EASEMENT OFF ATKINSON ST	6	VCP	34.5	1	8	4
SMH	C04-199	4.3	SMH	C04-214	4.9	0.0464	BACKYARD EASEMENT OFF AMBERWOOD RD TO HICKORY ST	6	VCP	119.5	1	8	4
SMH	C04-200	8	SMH	C04-215	5.1	0.0558	BACKYARD EASEMENT OFF BRENTWOOD RD TO HICKORY ST	6	VCP	122.2	2	8	4
SMH	C04-201	9.1	SMH	C04-216	10.8	0.0305	BACKYARD EASEMENT OFF BROOKWOOD RD TO HICKORY ST	6	VCP	128.1	2	8	4
SMH	C04-202	7	SMH	C04-217	10.2	0.0429	BACKYARD EASEMENT OFF ATKINSON ST TO HICKORY ST	6	VCP	122.1	2	8	4
SMH	C04-213	4.5	SMH	C04-214	4.8	0.0159	PRIVATE DRIVEWAY TO HICKORY ST	6	VCP	35.2	0	8	4
SMH	C04-247	4.1	SMH	C04-195	7	0.041	BACKYARD EASEMENT OFF ATKINSON ST	6	VCP	309.9	11	8	4
SMH	B04-048	3.1	SMH	B04-064	6.5	0.0056	E ST	6	VCP	297.6	4	11	
SMH	B04-049	6	SMH	B04-044	2.5	0.0053	LUALAN LN	6	UV CIPP	250.1	3	11	5
SMH	B05-046	3	SMH	B05-464	5.8	0.0313	JUBILEE AL	6	UV CIPP	326	14	12	5, 12
SMH	B05-048	6	SMH	B05-057	8.3	0.0189	OPEN SPACE TO WILLOW AV	8	VCP	321.7	5	12	4, 9, 10
SMH	B05-069	6	SMH	B05-060	5.09	0.0109	KING RD	6	VCP	96.8	3	12	10
SMH	B05-079	10.2	SMH	B05-069	6	0.0036	KING RD	6	VCP	236.2	8	12	10
SMH	B05-086	11	SMH	B05-077	12.07	0.0108	BACKYARD EASEMENT TO CHERRY ST	6	VCP	218.6	4	12	4, 14
SMH	B05-090	4.5	SMH	B05-418	4	0.0119	HILLCREST AV TO MARIETTI WY	6	VCP	317.3	4	12	
SMH	B05-091	5.6	SMH	B05-113	11.1	0.0016	KING RD	6	VCP	364.4	3	12	10
SMH	B05-101	5.75	SMH	B05-114	4.2	0.0038	HIGHLAND AV	6	VCP	199.9	4	12	10
SMH	B05-114	4.16	SMH	B05-134	6.08	0.0085	HIGHLAND AV	6	VCP	279.2	3	12	10
SMH	B05-116	7.1	SMH	B05-112	9	0.0055	FERN ST TO IRENE AV	6	VCP	264.3	2	12	
SMH	B05-133	7.2	SMH	B05-143	10.4	0.0194	KING RD	6	VCP	201.8	3	12	10

REV NO	DATE	DRAWN	CHKD	COMMENTS

DESIGNED BY: JC
 DRAWN BY: JMH
 APPROVED BY: TM
 DATE: JANUARY 2021



**ENVIRONMENTAL UTILITIES
 ENGINEERING DIVISION**

City of Roseville
 2021 Sewer Collection System CIPP Rehabilitation Project

Pipe Segment Detail Table 1

FROM	UPSTREAM ID	UPSTREAM DEPTH (FT)	TO	DOWNSTREAM ID	DOWNSTREAM DEPTH (FT)	FLOWS (MGD) See Note 1	STREET NAME/MAIN LOCATION	EXISTING DIAMETER (IN)	EXISTING MATERIAL	REPAIR LENGTH (FT)	# OF LATERALS	AREA	PLAN NOTES
SMH	B05-138	8.2	SMH	B05-139	13.7	0.0082	VINE AV	8	VCP	327.9	3	12	10
FB	B05-379	N/A	SMH	B05-075	3.1	0.0034	IRENE AV	6	VCP	401.8	8	12	7, 8
SMH	B05-391	2	SMH	B05-047	3.3	0.0059	BING AL	6	VCP	242.1	13	12	
CAP	B05-395	N/A	SMH	B05-116	7	0.0026	JUBILEE AL	6	VCP	202	4	12	8
SMH	B05-464	5.8	SMH	B05-074	6	0.0313	JUBILEE AL	6	VCP	334	17	12	
SMH	B05-026	8.04	SMH	B05-033	8.16	0.0177	EASEMENT OFF OAK RIDGE DR	8	UV CIPP	156.2	1	13	4
SMH	B05-032	4	SMH	B05-031	4.7	0.0083	EASEMENT OFF OF DOUGLAS BLVD	6	VCP	314.8	0	13	4, 5
SMH	B05-039	10	SMH	B05-062	6.8	0.0118	KEEHNER AV	6	VCP	489.2	16	13	10
SMH	B05-054	10.1	SMH	B05-065	10.1	0.0072	TOYON WY	6	VCP	296.3	6	13	7, 10
SMH	B05-055	6.3	SMH	B05-066	11.11	0.0134	MARIAN WY	6	VCP	223.2	7	13	10
SMH	B05-102	4.66	SMH	B05-093	5.1	0.0097	SUNSET DR	6	VCP	220.1	3	13	11
SMH	B05-125	2.9	SMH	B05-124	3.6	0.012	SMITH LN	6	VCP	253.2	6	13	
SMH	B05-135	4.5	SMH	B05-106	8	0.0053	GERRY WY	6	VCP	399.6	11	13	
SMH	B05-449	6.84	SMH	B05-072	9.11	0.0231	PARKING LOT EASEMENT PARALLEL TO SUNRISE BLVD	10	VCP	145.8	0	13	4
SMH	B05-469	4.5	SMH	B05-041	11	0.0013	BONNY KNOLL RD	6	VCP	290	5	13	10
SMH	B07-198	6	SMH	B07-197	4.2	0.0142	BANBURY CI	6	UV CIPP	280.7	7	15	5
SMH	A04-109	5	SMH	A04-117	6.1	0.0164	BACKYARD EASEMENT OFF GLENBROOK AV	6	VCP	300.6	8	20	4
SMH	A04-117	6.1	SMH	A04-118	5	0.0372	BACKYARD EASEMENT TO GLENBROOK AV	6	VCP	131.5	0	20	4
SMH	A04-133	5	SMH	A04-117	6.1	0.017	BACKYARD EASEMENT OFF GLENBROOK AV	6	VCP	309.7	8	20	4
SMH	A04-135	6.8	SMH	A04-134	5	0.0137	BACKYARD EASEMENT TO GLENBROOK AV	6	VCP	219.2	3	20	4
SMH	A04-136	6	SMH	A04-137	6.1	0.0101	BACKYARD EASEMENT OFF WHYTE AVE	6	VCP	195.5	3	20	4
SMH	A04-137	6.1	SMH	A04-138	7	0.0152	BACKYARD EASEMENT OFF CRESTHAVEN DR	6	VCP	34.1	0	20	4
SMH	A04-138	7	SMH	A04-139	4.1	0.0191	BACKYARD EASEMENT TO CRESTHAVEN DR	6	VCP	145.7	2	20	4

Notes:

- 1 FLOWS ARE PEAK WET WEATHER FLOWS.
- 2 THIS WORK SHALL BE COORDINATED TO OCCUR WHEN SCHOOL IS NOT IN SESSION.
- 3 NOT USED.
- 4 CONTRACTOR SHALL COORDINATE ACCESS WITH CONSTRUCTION INSPECTOR.
- 5 COLLECTION PIPELINE HAS PREVIOUSLY BEEN UV CIPP LINED; ONLY TOP HATS ON ACTIVE LATERALS REQUIRED.
- 6 UNLESS OTHERWISE NOTED, COLLECTION PIPE SHALL BE UV CIPP LINED AND TOP HATS SHALL BE INSTALLED ON ALL ACTIVE LATERALS THAT CONNECT TO THE COLLECTION PIPELINE.
- 7 NOT ALL LATERALS SHOWN ON PLAN.
- 8 CONTRACTOR SHALL COORDINATE WITH CITY TO SCHEDULE CITY CREW'S EXCAVATION AT THE FB OR CAP FOR CONTRACTOR ACCESS.
- 9 NO WORK ON THIS PIPELINE SEGMENT BETWEEN FEBRUARY 1ST AND AUGUST 15TH. SEE SPECIFICATIONS FOR OTHER RESTRICTIONS AND REQUIREMENTS WHEN WORKING IN OPEN SPACE AREAS.
- 10 THIS PIPELINE AND LATERALS ARE LOCATED WITHIN THE CITY'S DOWNTOWN WATER MAINS REPLACEMENT PROJECT - HILLCREST NEIGHBORHOOD WHICH WILL BE UNDER CONSTRUCTION DURING WORK PERIOD. CONTRACTOR SHALL COORDINATE SCHEDULE FOR THIS WORK WITH CITY'S REPRESENTATIVE FOR THIS OTHER PROJECT. ALL WORK ON THIS PIPELINE SHALL NOT OCCUR UNTIL AFTER SEPTEMBER 1, 2021.
- 11 THIS PIPELINE AND LATERALS ARE LOCATED WITHIN THE CITY'S DOWNTOWN WATER MAINS REPLACEMENT PROJECT - HILLCREST NEIGHBORHOOD WHICH WILL BE UNDER CONSTRUCTION DURING WORK PERIOD. CONTRACTOR SHALL COORDINATE SCHEDULE FOR THIS WORK WITH CITY'S REPRESENTATIVE FOR THIS OTHER PROJECT. ALL WORK ON THIS PIPELINE SHALL NOT OCCUR UNTIL AFTER OCTOBER 15, 2021.
- 12 PIPELINE INCLUDES LATERAL(S) THAT HAS EXISTING TOP HAT(S) INSTALLED AND THEREFORE LATERAL(S) NOT INCLUDED IN THE NUMBER OF LATERALS WITHIN THIS TABLE. LATERALS WITH EXISTING TOP HATS ARE COLORED GREEN ON THE PLAN SHEETS.
- 13 CITY WILL INSTALL NEW SMH ON EXISTING PIPELINE AT CROSSING WITH EMERALD OAK ROAD PRIOR TO CONTRACTOR'S WORK COMMENCING ON THIS PROJECT.
- 14 ACCESS FOR THIS PIPELINE WILL BE FROM 412 CHERRY ST. ANY DAMAGE TO THIS PROPERTY WILL NEED TO BE REPAIRED TO ITS ORIGINAL STATE OR BETTER. WORK ON THIS PROPERTY SHALL ONLY BE PERFORMED WHEN GROUND CONDITIONS ARE DRY.

Abbreviations:

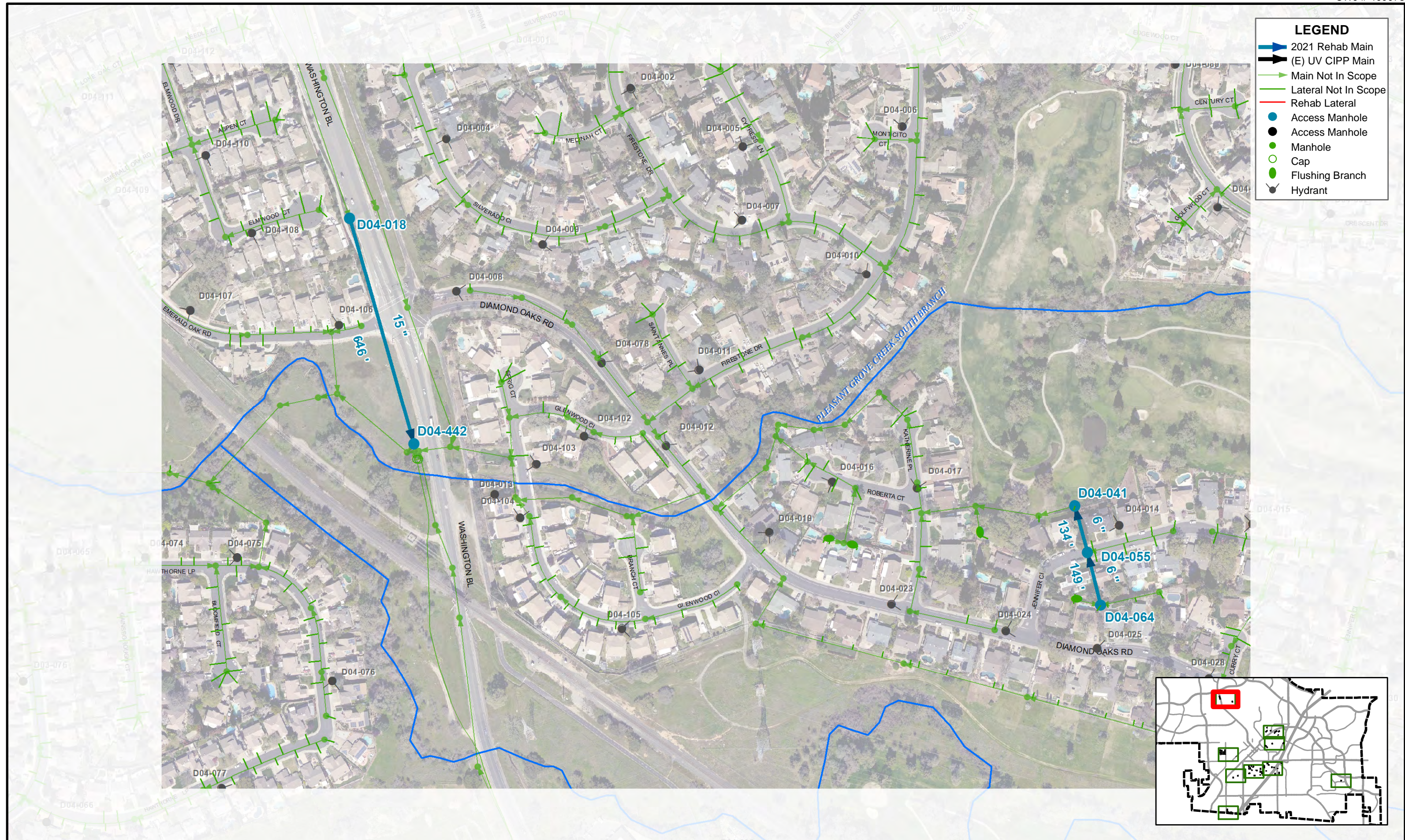
- AL Alley
- APT Apartments
- AV Avenue
- CAP End of line cap
- CIPP Cured-in-place pipe
- CO Cleanout
- DR Drive
- FB Flushing Branch
(either in line or end of line cleanout)
- HS High School
- ID Identification
- LN Lane
- N/A Not Applicable
- RD Road
- SMH Sewer Manhole
- ST Street
- TC Terra Cotta
- VCP Vitrified Clay Pipe
- WY Way

DESIGNED BY: JC
DRAWN BY: JMH
APPROVED BY: TM
DATE: JANUARY 2021



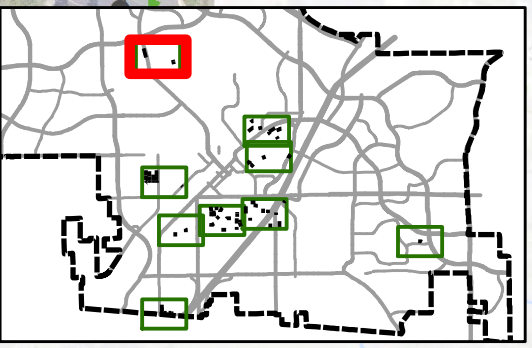
City of Roseville
2021 Sewer Collection System CIPP Rehabilitation Project

Pipe Segment Detail Table 2



LEGEND

- ▬ 2021 Rehab Main
- ▬ (E) UV CIPP Main
- ▬ Main Not In Scope
- ▬ Lateral Not In Scope
- ▬ Rehab Lateral
- Access Manhole
- Access Manhole
- Manhole
- Cap
- ▬ Flushing Branch
- Hydrant



REV NO.	DATE	DRAWN	CHKD	COMMENTS

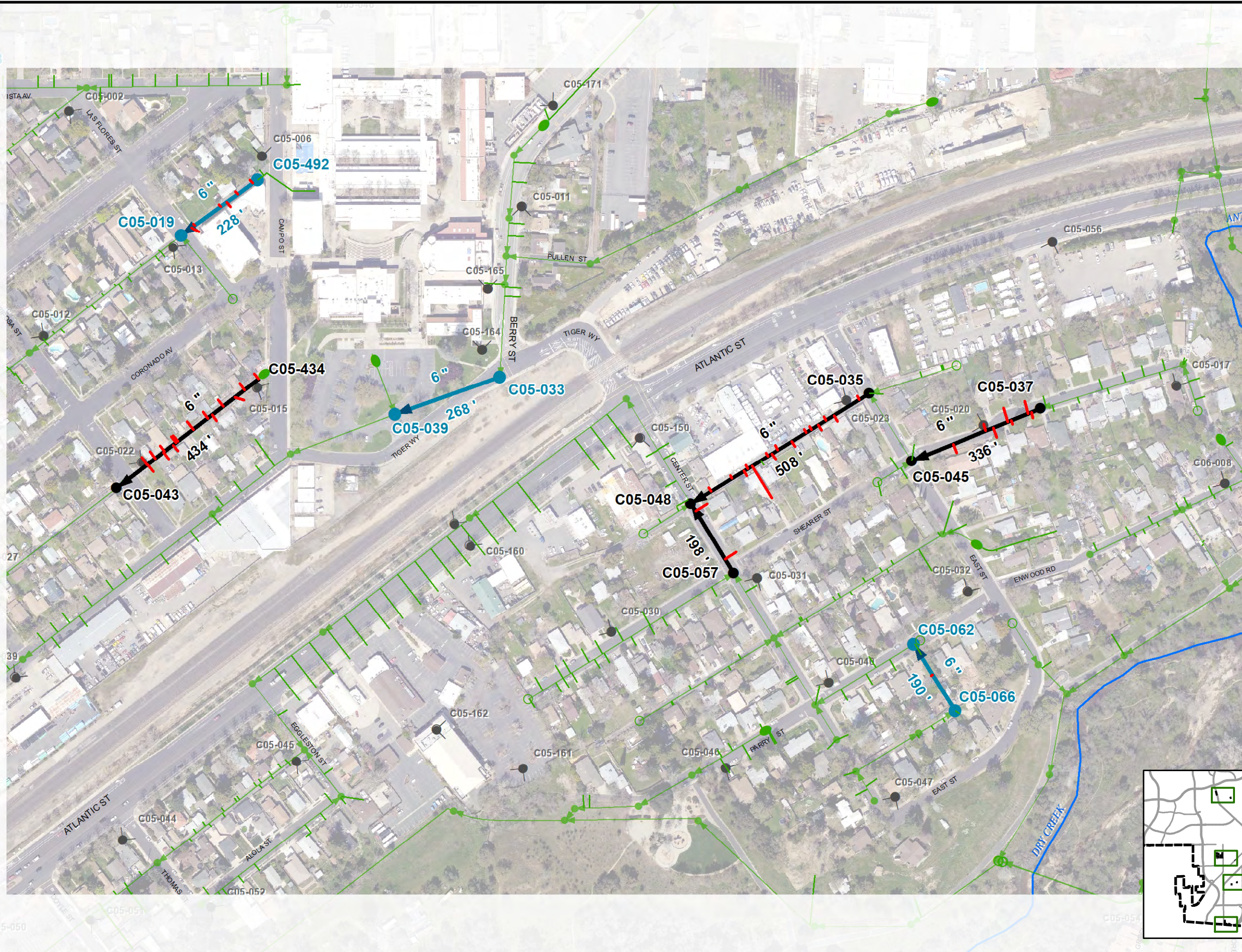
DESIGNED BY: JC
 DRAWN BY: JMH
 APPROVED BY: TM
 DATE: JANUARY 2021

**ENVIRONMENTAL UTILITIES
 ENGINEERING DIVISION**

City of Roseville
2021 Sewer Collection System CIPP Rehabilitation Project

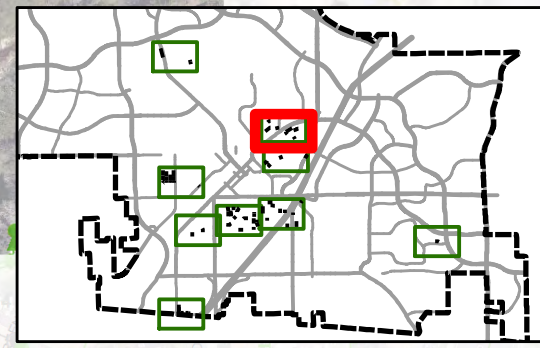


Area 1



LEGEND

- 2021 Rehab Main
- (E) UV CIPP Main
- Main Not In Scope
- Lateral Not In Scope
- Rehab Lateral
- Access Manhole
- Access Manhole
- Manhole
- Cap
- Flushing Branch
- Hydrant



REV NO.	DATE:	DRAWN:	CHKD:	COMMENTS:

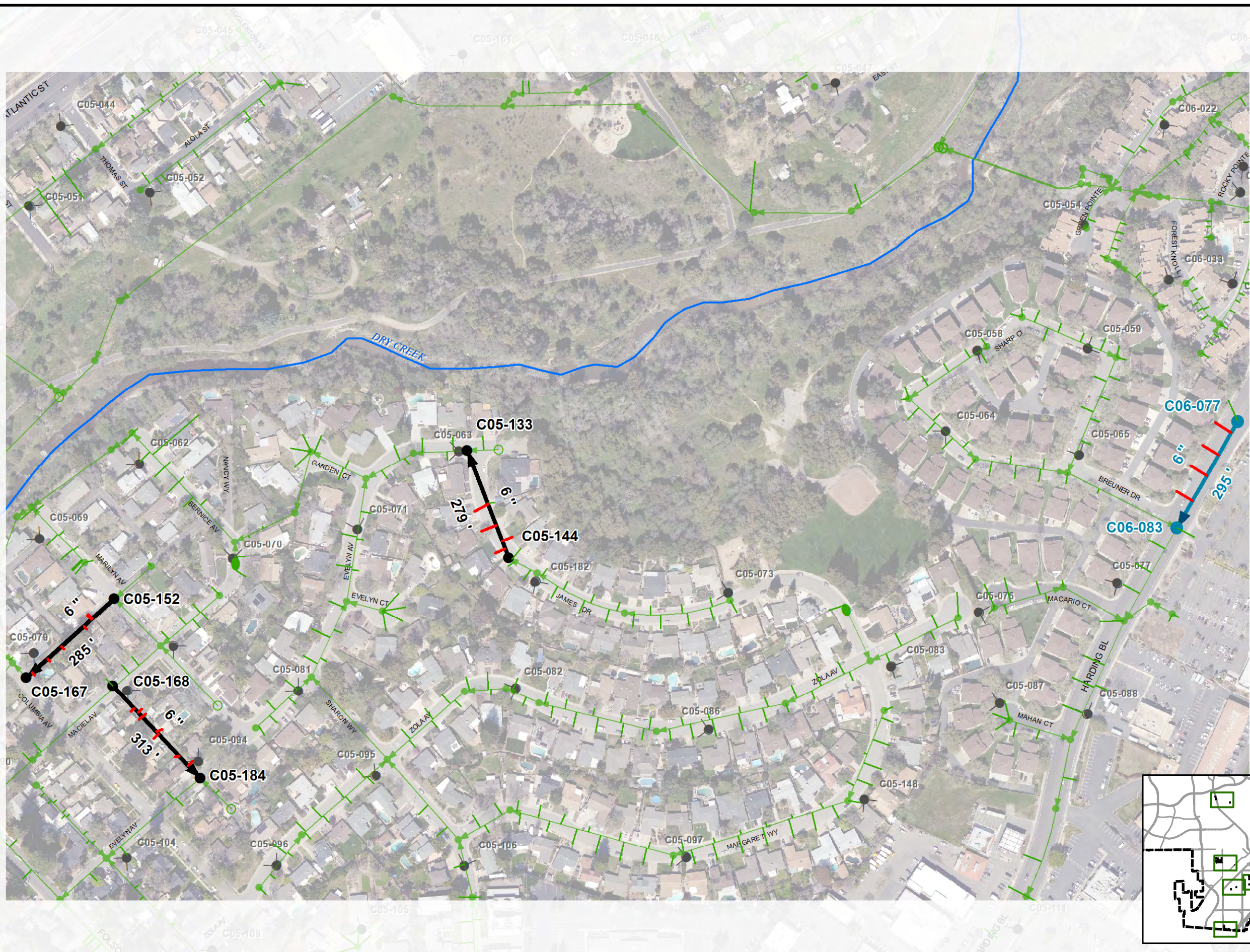
DESIGNED BY: JC
 DRAWN BY: JMH
 APPROVED BY: TM
 DATE: JANUARY 2021

CITY OF ROSEVILLE CALIFORNIA
ENVIRONMENTAL UTILITIES ENGINEERING DIVISION

City of Roseville
2021 Sewer Collection System CIPP Rehabilitation Project

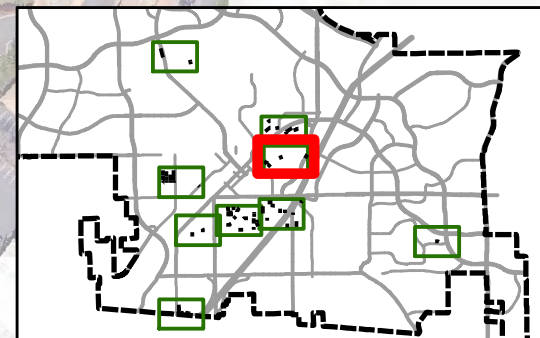


Area 4



LEGEND

- 2021 Rehab Main
- (E) UV CIPP Main
- Main Not In Scope
- Lateral Not In Scope
- Rehab Lateral
- Access Manhole
- Manhole
- Cap
- Flushing Branch
- Hydrant



REV NO.	DATE	DRAWN:	CHKD:	COMMENTS:

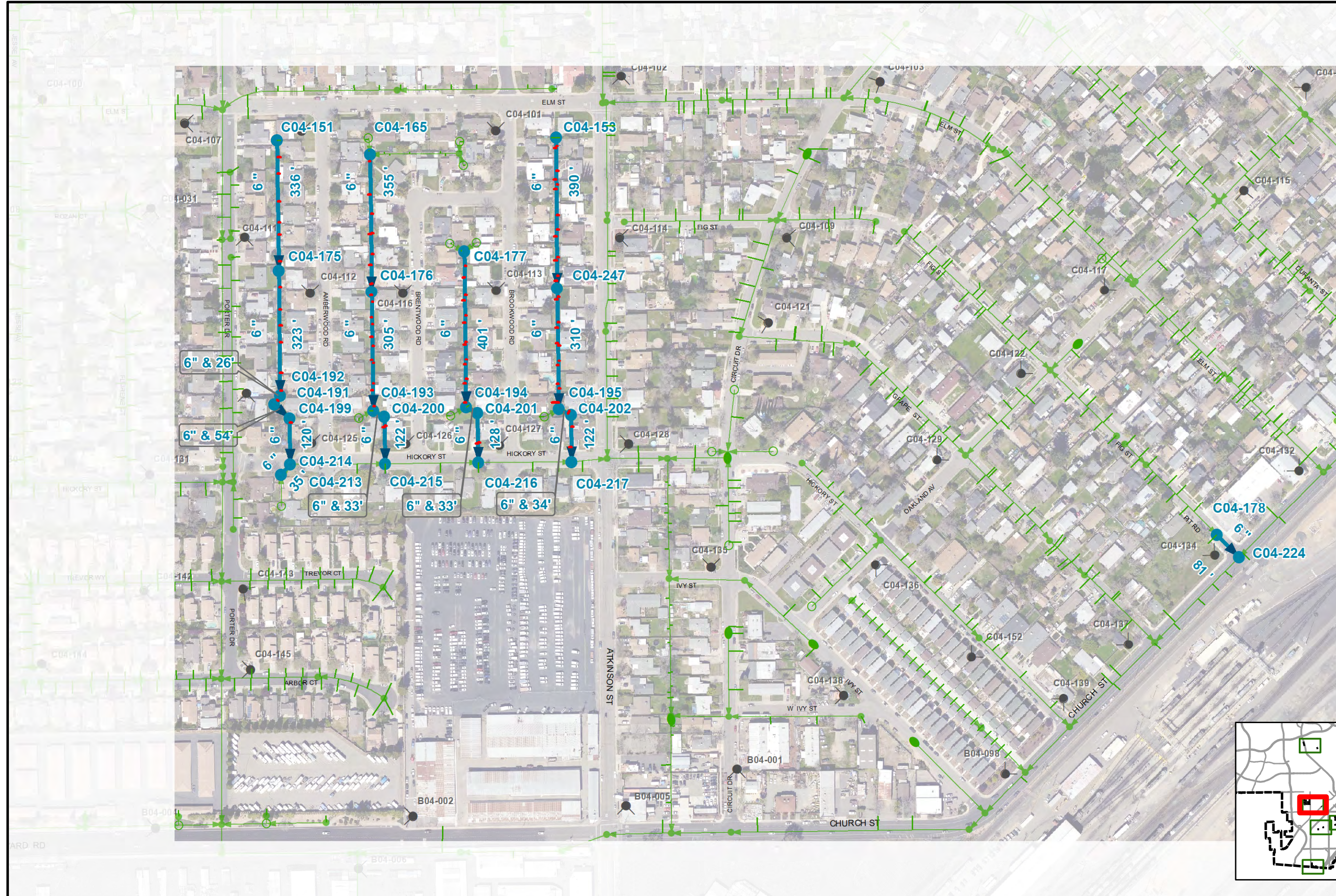
DESIGNED BY: JC
 DRAWN BY: JMH
 APPROVED BY: TM
 DATE: JANUARY 2021

ENVIRONMENTAL UTILITIES ENGINEERING DIVISION

City of Roseville
2021 Sewer Collection System CIPP Rehabilitation Project

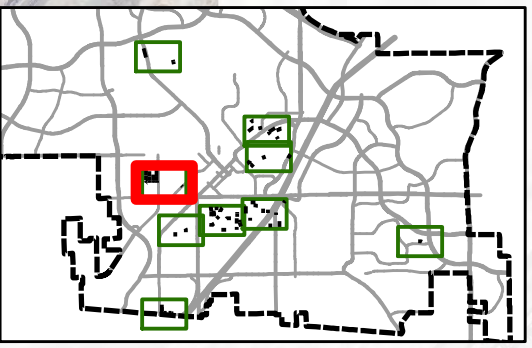


Area 7



LEGEND

- 2021 Rehab Main
- (E) UV CIPP Main
- Main Not In Scope
- Lateral Not In Scope
- Rehab Lateral
- Access Manhole
- Access Manhole
- Manhole
- Cap
- Flushing Branch
- Hydrant



REV NO.	DATE	DRAWN:	CHKD:	COMMENTS:

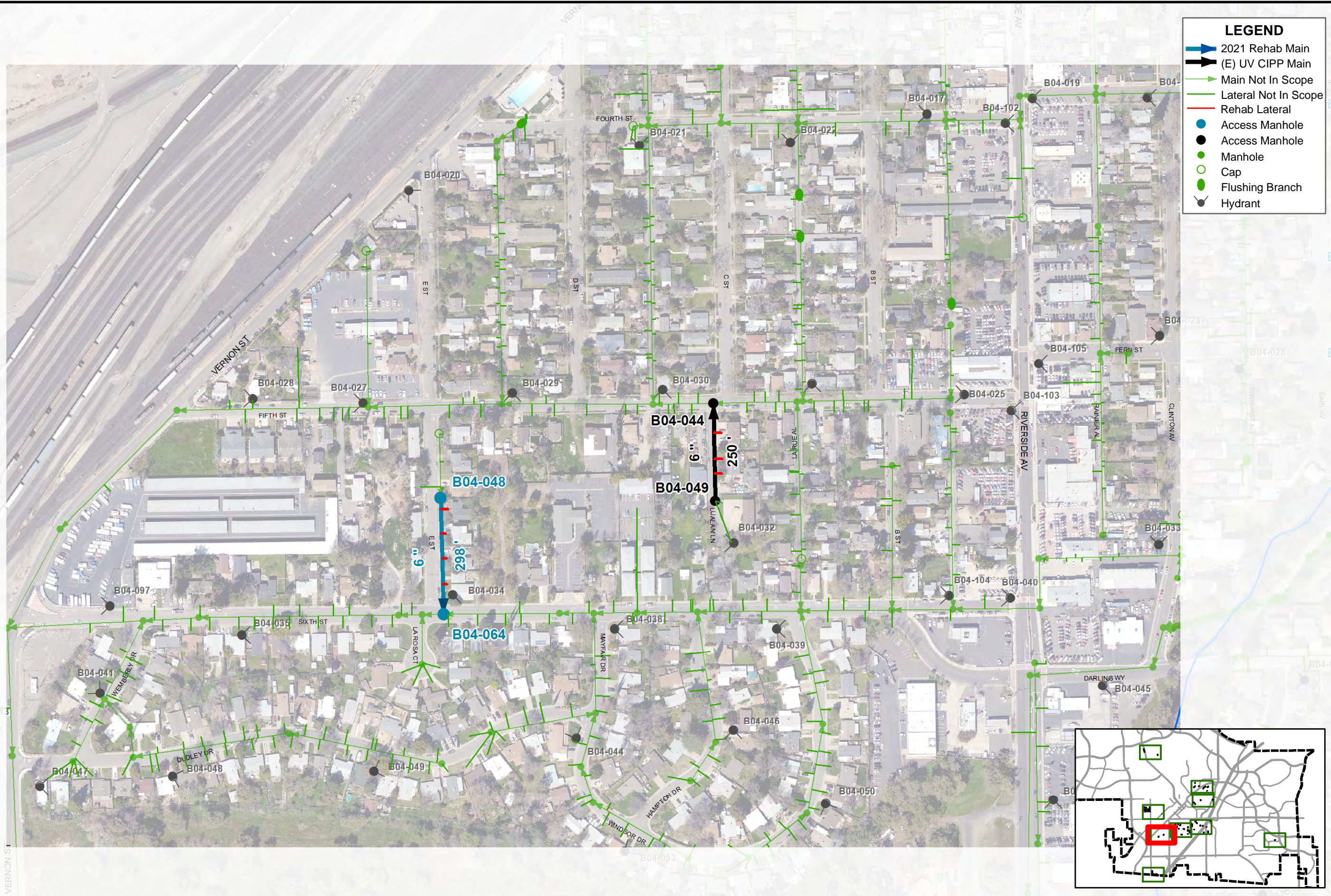
DESIGNED BY: JC
 DRAWN BY: JMH
 APPROVED BY: TM
 DATE: JANUARY 2021

CITY OF ROSEVILLE CALIFORNIA
ENVIRONMENTAL UTILITIES ENGINEERING DIVISION

City of Roseville
2021 Sewer Collection System CIPP Rehabilitation Project



Area 8



LEGEND

- ➔ 2021 Rehab Main
- ➔ (E) UV CIPP Main
- ➔ Main Not In Scope
- ➔ Lateral Not In Scope
- Rehab Lateral
- Access Manhole
- Access Manhole
- Manhole
- Cap
- Flushing Branch
- Hydrant

REV NO.	DATE:	DRAWN:	CHKD:	COMMENTS:				

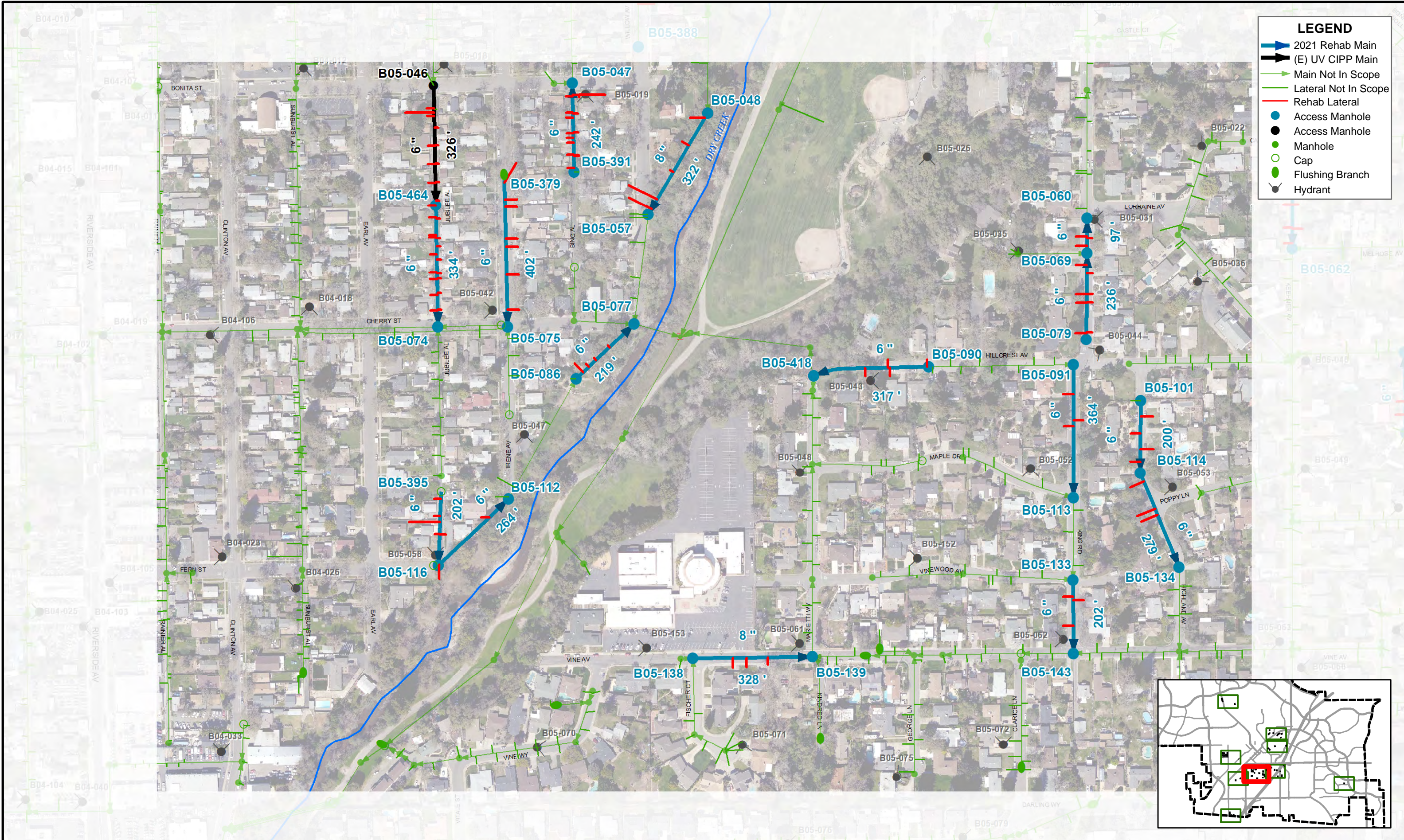
DESIGNED BY: JC
 DRAWN BY: JMH
 APPROVED BY: TM
 DATE: JANUARY 2021

**ENVIRONMENTAL UTILITIES
 ENGINEERING DIVISION**

City of Roseville
2021 Sewer Collection System CIPP Rehabilitation Project



Area 11



LEGEND

- ➔ 2021 Rehab Main
- ➔ (E) UV CIPP Main
- ➔ Main Not In Scope
- Lateral Not In Scope
- Rehab Lateral
- Access Manhole
- Access Manhole
- Manhole
- Cap
- Flushing Branch
- ⦿ Hydrant

REV NO.	DATE	DRAWN:	CHKD:	COMMENTS:

DESIGNED BY: JC
 DRAWN BY: JMH
 APPROVED BY: TM
 DATE: JANUARY 2021

CITY OF ROSEVILLE
 ENVIRONMENTAL UTILITIES
 ENGINEERING DIVISION

City of Roseville
 2021 Sewer Collection System CIPP Rehabilitation Project

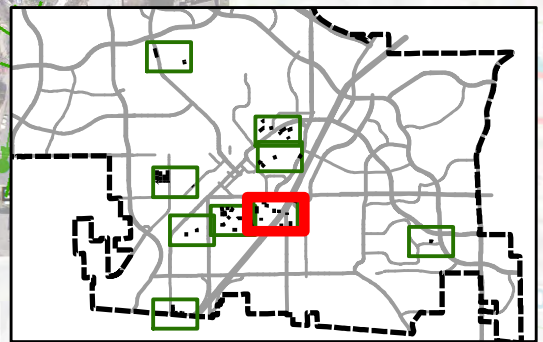


Area 12



LEGEND

- ▶ 2021 Rehab Main
- ▶ (E) UV CIPP Main
- ▶ Main Not In Scope
- ▶ Lateral Not In Scope
- ▶ Rehab Lateral
- Access Manhole
- Access Manhole
- Manhole
- Cap
- Flushing Branch
- Hydrant



REV NO.	DATE	DRAWN	CHKD	COMMENTS

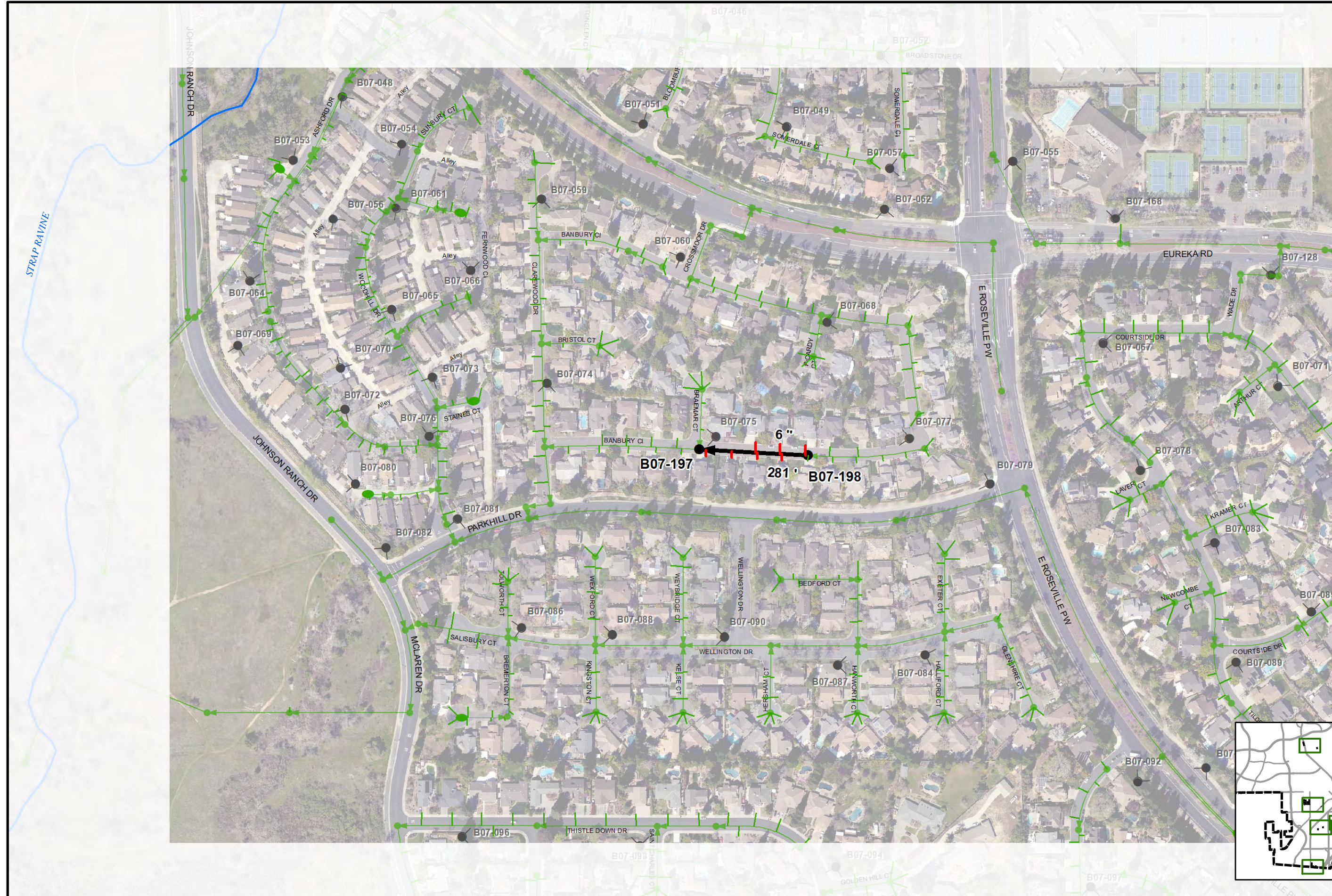
DESIGNED BY: JC
 DRAWN BY: JMH
 APPROVED BY: TM
 DATE: JANUARY 2021

CITY OF ROSEVILLE CALIFORNIA
ENVIRONMENTAL UTILITIES ENGINEERING DIVISION

City of Roseville
2021 Sewer Collection System CIPP Rehabilitation Project

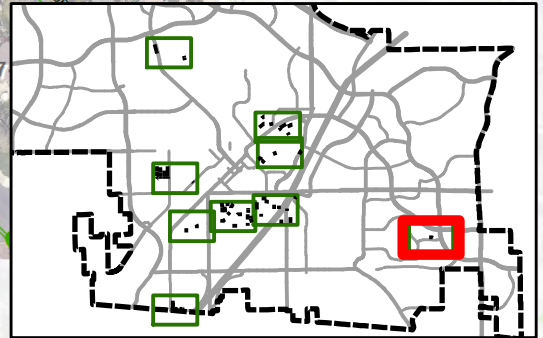


Area 13



LEGEND

- ➔ 2021 Rehab Main
- ➔ (E) UV CIPP Main
- ➔ Main Not In Scope
- Lateral Not In Scope
- Rehab Lateral
- Access Manhole
- Access Manhole
- Manhole
- Cap
- Flushing Branch
- ⦿ Hydrant



REV NO.	DATE:	DRAWN:	CHKD:	COMMENTS:				

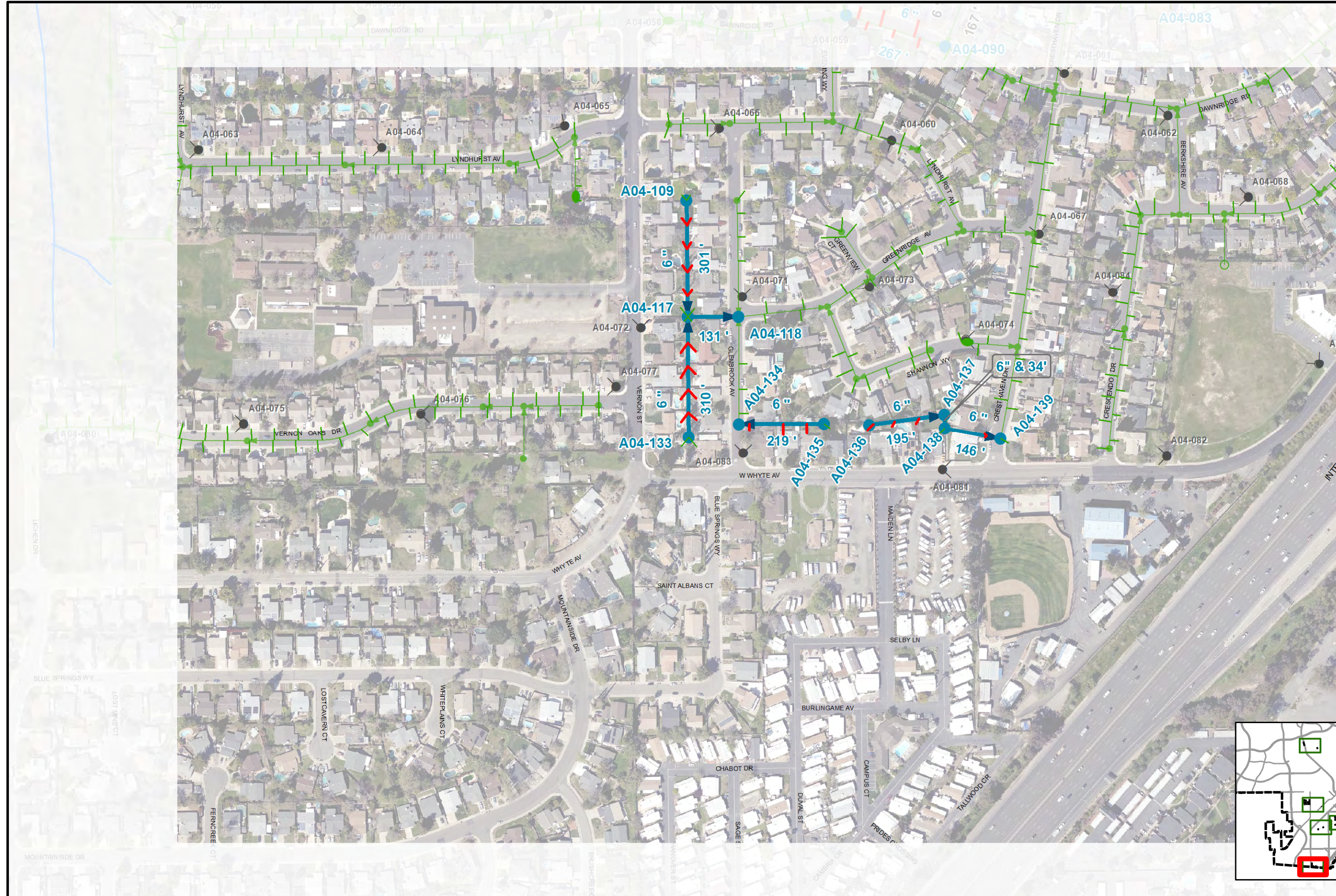
DESIGNED BY: JC
 DRAWN BY: JMH
 APPROVED BY: TM
 DATE: JANUARY 2021

**ENVIRONMENTAL UTILITIES
 ENGINEERING DIVISION**

City of Roseville
2021 Sewer Collection System CIPP Rehabilitation Project

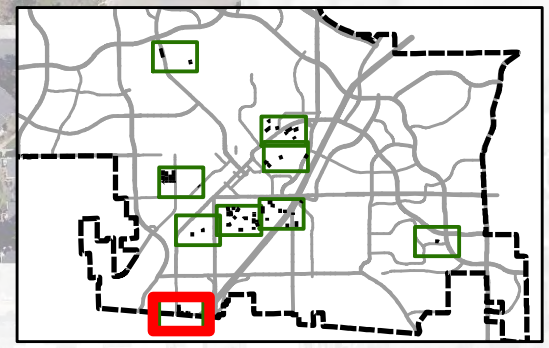


Area 15



LEGEND

- 2021 Rehab Main
- (E) UV CIPP Main
- Main Not In Scope
- Lateral Not In Scope
- Rehab Lateral
- Access Manhole
- Access Manhole
- Manhole
- Cap
- Flushing Branch
- Hydrant



REV NO.	DATE	DRAWN	CHKD	COMMENTS

DESIGNED BY: JC
 DRAWN BY: JMH
 APPROVED BY: TM
 DATE: JANUARY 2021

CITY OF ROSEVILLE CALIFORNIA
ENVIRONMENTAL UTILITIES ENGINEERING DIVISION

City of Roseville
2021 Sewer Collection System CIPP Rehabilitation Project



Area 20