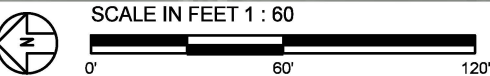
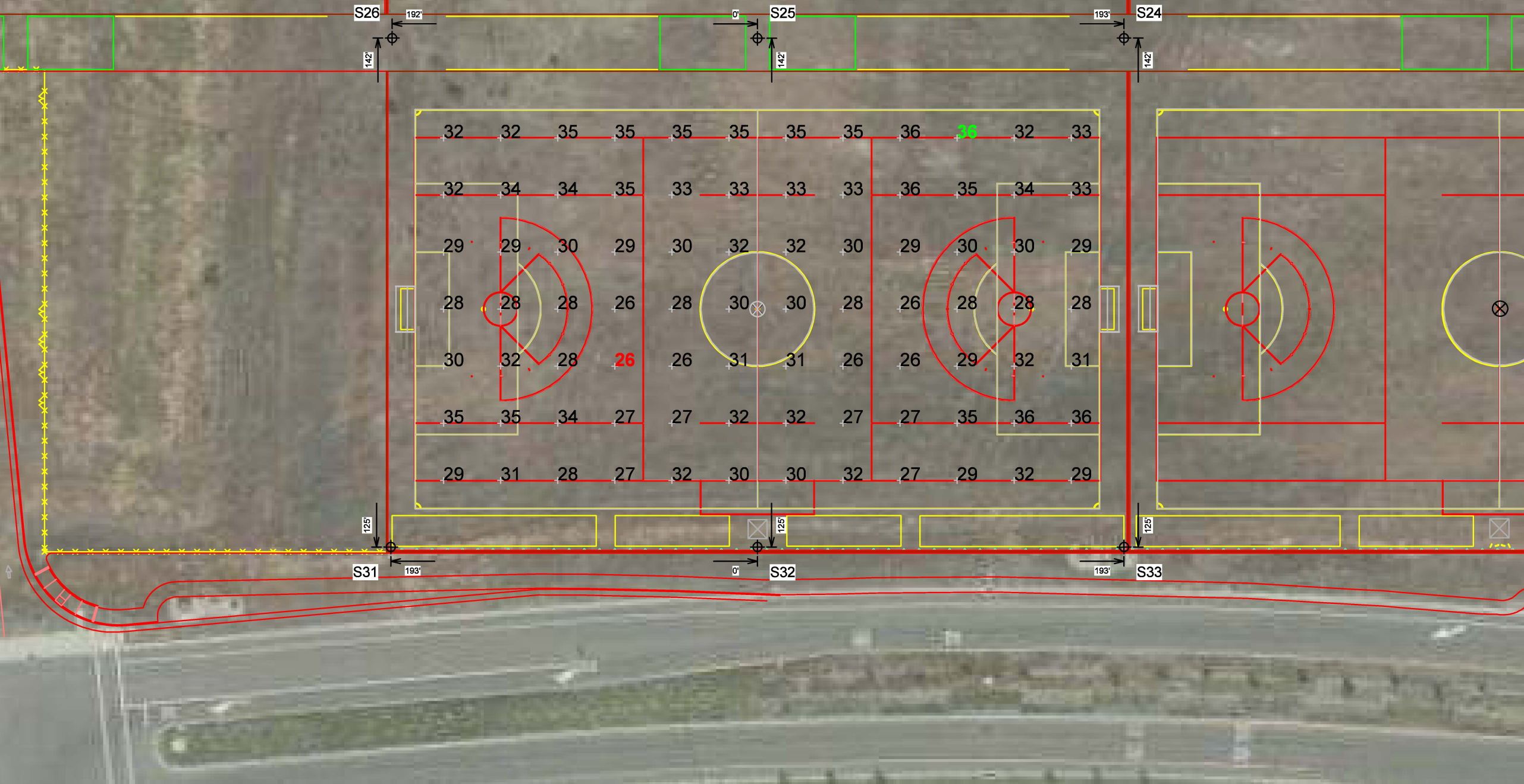


EQUIPMENT LIST FOR AREAS SHOWN

Pole				Luminaires				
QTY	LOCATION	SIZE	GRADE ELEVATION	MOUNTING HEIGHT	LUMINAIRE TYPE	QTY / POLE	THIS GRID	OTHER GRIDS
1	S1	70'	-	70'	TLC-LED-1200	1	1	0
				70'	TLC-LED-1500	2	2	0
2	S2, S29	70'	-	70'	TLC-LED-1500	4	4	0
1	S3	70'	-	70'	TLC-LED-1200	2	1	1
				70'	TLC-LED-1500	4	2	2
1	S24	70'	-	70'	TLC-LED-1500	6/6*	3	9
1	S25	70'	-	70'	TLC-LED-1500	4/4*	4	4
1	S26	70'	-	70'	TLC-LED-1500	6/3*	3	6
1	S28	70'	-	70'	TLC-LED-1500	6	3	3
1	S30	70'	-	70'	TLC-LED-1500	3	3	0
1	S31	70'	-	70'	TLC-LED-1200	2	2	0
				70'	TLC-LED-600	2	2	0
1	S32	70'	-	70'	TLC-LED-600	2	2	0
				70'	TLC-LED-900	4	4	0
				70'	TLC-LED-1200	2	2	0
1	S33	70'	-	70'	TLC-LED-600	2	2	0
				70'	TLC-LED-900	2	0	2
				70'	TLC-LED-1200	4	2	2
12	TOTALS					75	46	29

* This structure utilizes a back-to-back mounting configuration



ENGINEERED DESIGN By: Bryce Miles · File #215342C · 05-May-22

Roseville Soccer Complex

Roseville, CA

GRID SUMMARY	
Name:	Soccer 8
Size:	360' x 210'
Spacing:	30.0' x 30.0'
Height:	3.0' above grade

ILLUMINATION SUMMARY	
MAINTAINED HORIZONTAL FOOTCANDLES	
Entire Grid	
Guaranteed Average:	30
Scan Average:	30.92
Maximum:	36
Minimum:	26
Avg / Min:	1.20
Guaranteed Max / Min:	2.5
Max / Min:	1.42
UG (adjacent pts):	1.28
CU:	0.37
No. of Points:	84
LUMINAIRE INFORMATION	
Applied Circuits:	A, H
No. of Luminaires:	46
Total Load:	56.44 kW

Guaranteed Performance: The ILLUMINATION described above is guaranteed per your Musco Warranty document and includes a 0.95 dirt depreciation factor.

Field Measurements: Individual field measurements may vary from computer-calculated predictions and should be taken in accordance with IESNA RP-6-15.

Electrical System Requirements: Refer to Amperage Draw Chart and/or the "Musco Control System Summary" for electrical sizing.

Installation Requirements: Results assume ± 3% nominal voltage at line side of the driver and structures located within 3 feet (1m) of design locations.



We Make It Happen®

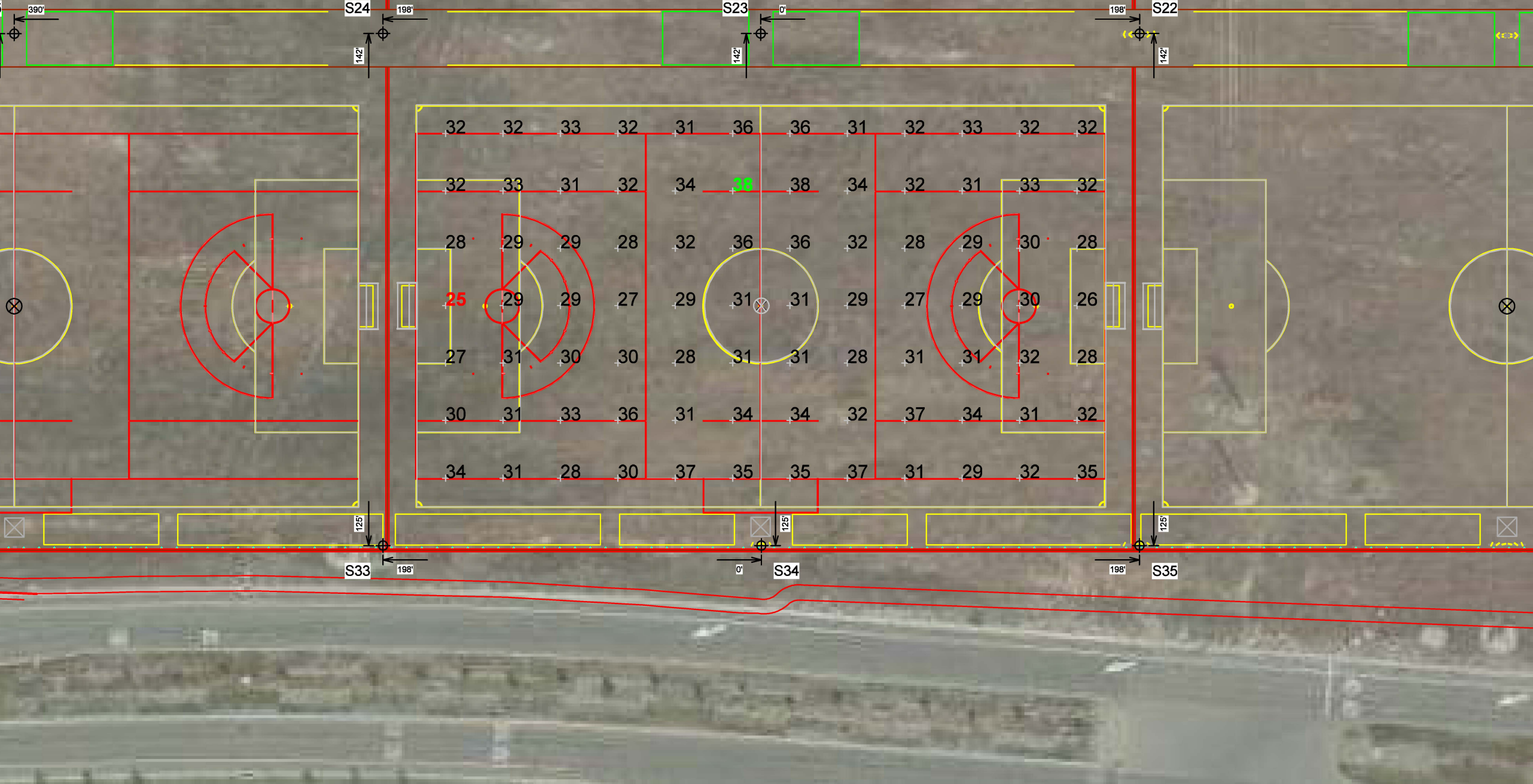
Not to be reproduced in whole or part without the written consent of Musco Sports Lighting, LLC. ©1981, 2022 Musco Sports Lighting, LLC.

ILLUMINATION SUMMARY

EQUIPMENT LIST FOR AREAS SHOWN

Pole				Luminaires				
QTY	LOCATION	SIZE	GRADE ELEVATION	MOUNTING HEIGHT	LUMINAIRE TYPE	QTY / POLE	THIS GRID	OTHER GRIDS
2	S5, S7	70'	-	70'	TLC-LED-1200	2	1	1
				70'	TLC-LED-1500	4	2	2
1	S6	70'	-	70'	TLC-LED-1500	4	4	0
1	S22	70'	-	70'	TLC-LED-1500	6/6*	3	9
1	S23	70'	-	70'	TLC-LED-1200	2*	2	0
				70'	TLC-LED-1500	4/2*	2	4
1	S24	70'	-	70'	TLC-LED-1500	6/6*	6	6
1	S25	70'	-	70'	TLC-LED-1500	4/4*	4	4
1	S26	70'	-	70'	TLC-LED-1500	6/3*	3	6
1	S33	70'	-	70'	TLC-LED-600	2	0	2
				70'	TLC-LED-900	2	2	0
				70'	TLC-LED-1200	4	2	2
1	S34	70'	-	70'	TLC-LED-900	6	6	0
				70'	TLC-LED-1200	2	2	0
1	S35	70'	-	70'	TLC-LED-1200	2	2	0
				70'	TLC-LED-900	3	2	1
				70'	TLC-LED-1500	2	0	2
11	TOTALS					88	46	42

* This structure utilizes a back-to-back mounting configuration



Pole location(s) ⚓ dimensions are relative to 0,0 reference point(s) ⊗

Roseville Soccer Complex

Roseville,CA

GRID SUMMARY

Name: Soccer 9
Size: 360' x 210'
Spacing: 30.0' x 30.0'
Height: 3.0' above grade

ILLUMINATION SUMMARY

MAINTAINED HORIZONTAL FOOTCANDLES

Entire Grid

Guaranteed Average: 30
Scan Average: 31.47
Maximum: 38
Minimum: 25
Avg / Min: 1.24
Guaranteed Max / Min: 2.5
Max / Min: 1.50
UG (adjacent pts): 1.22
CU: 0.37
No. of Points: 84

LUMINAIRE INFORMATION

Applied Circuits: C, I
No. of Luminaires: 46
Total Load: 57.78 kW

Guaranteed Performance: The ILLUMINATION described above is guaranteed per your Musco Warranty document and includes a 0.95 dirt depreciation factor.

Field Measurements: Individual field measurements may vary from computer-calculated predictions and should be taken in accordance with IESNA RP-6-15.

Electrical System Requirements: Refer to Amperage Draw Chart and/or the "Musco Control System Summary" for electrical sizing.

Installation Requirements: Results assume ± 3% nominal voltage at line side of the driver and structures located within 3 feet (1m) of design locations.



We Make It Happen®

Not to be reproduced in whole or part without the written consent of Musco Sports Lighting, LLC. ©1981, 2022 Musco Sports Lighting, LLC.

ILLUMINATION SUMMARY

EQUIPMENT LIST FOR AREAS SHOWN

Pole				Luminaires				
QTY	LOCATION	SIZE	GRADE ELEVATION	MOUNTING HEIGHT	LUMINAIRE TYPE	QTY / POLE	THIS GRID	OTHER GRIDS
1	S1	70'	-	70'	TLC-LED-1200	1	1	0
				70'	TLC-LED-1500	2	2	0
2	S2, S29	70'	-	70'	TLC-LED-1500	4	4	0
1	S3	70'	-	70'	TLC-LED-1200	2	1	1
				70'	TLC-LED-1500	4	2	2
1	S20	70'	-	70'	TLC-LED-1500	6/3*	3	6
1	S21	70'	-	70'	TLC-LED-1500	4/4*	4	4
1	S22	70'	-	70'	TLC-LED-1500	6/6*	3	9
1	S28	70'	-	70'	TLC-LED-1500	6	3	3
1	S30	70'	-	70'	TLC-LED-1500	3	3	0
1	S35	70'	-	70'	TLC-LED-1200	2	0	2
				70'	TLC-LED-900	3	1	2
				70'	TLC-LED-1500	2	2	0
1	S36	70'	-	70'	TLC-LED-900	2	2	0
				70'	TLC-LED-1500	4	4	0
1	S37	70'	-	70'	TLC-LED-900	1	1	0
				70'	TLC-LED-1500	2	2	0
12	TOTALS					71	42	29

* This structure utilizes a back-to-back mounting configuration



Pole location(s) ⚓ dimensions are relative to 0,0 reference point(s) ⊗

Roseville Soccer Complex

Roseville,CA

GRID SUMMARY

Name: Soccer 10
Size: 360' x 210'
Spacing: 30.0' x 30.0'
Height: 3.0' above grade

ILLUMINATION SUMMARY

MAINTAINED HORIZONTAL FOOTCANDLES

Entire Grid

Guaranteed Average: 30
Scan Average: 31.11
Maximum: 35
Minimum: 27
Avg / Min: 1.17
Guaranteed Max / Min: 2.5
Max / Min: 1.33
UG (adjacent pts): 1.17
CU: 0.37
No. of Points: 84

LUMINAIRE INFORMATION

Applied Circuits: A, J
No. of Luminaires: 42
Total Load: 57.38 kW

Guaranteed Performance: The ILLUMINATION described above is guaranteed per your Musco Warranty document and includes a 0.95 dirt depreciation factor.

Field Measurements: Individual field measurements may vary from computer-calculated predictions and should be taken in accordance with IESNA RP-6-15.

Electrical System Requirements: Refer to Amperage Draw Chart and/or the "Musco Control System Summary" for electrical sizing.

Installation Requirements: Results assume ± 3% nominal voltage at line side of the driver and structures located within 3 feet (1m) of design locations.



We Make It Happen®

Not to be reproduced in whole or part without the written consent of Musco Sports Lighting, LLC. ©1981, 2022 Musco Sports Lighting, LLC.

ILLUMINATION SUMMARY

Roseville,CA

Name:	West Road Spill - Across Road
Spacing:	30.0'
Height:	0.0' above grade

HORIZONTAL FOOTCANDLES

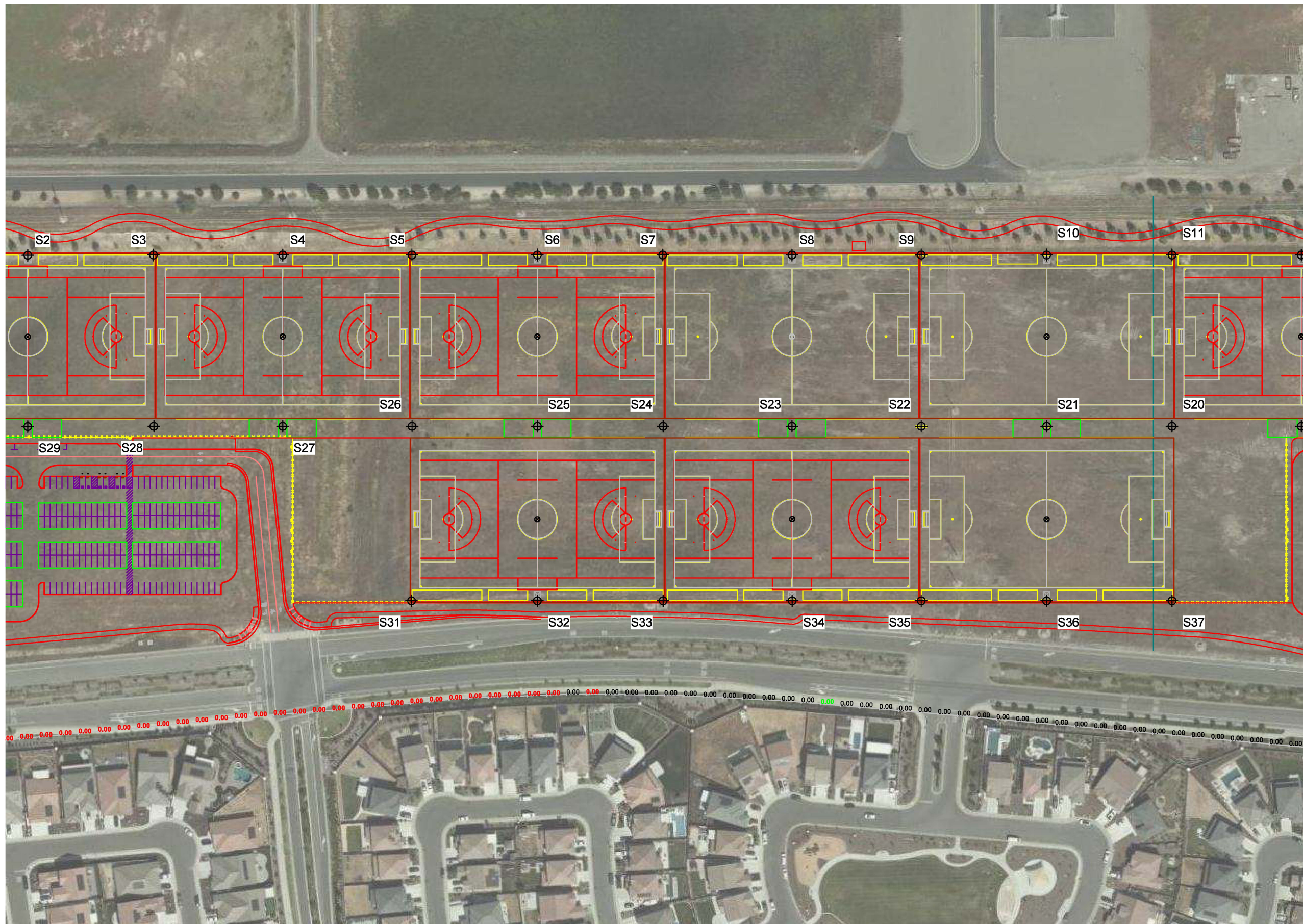
Scan Average:	Entire Grid 0.0000
Maximum:	0.00
Minimum:	0.00
No. of Points:	116

LUMINAIRE INFORMATION

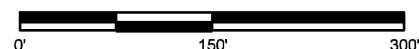
Applied Circuits:	A, B, C, D, E, F, G, H, I, J
No. of Luminaires:	214
Total Load:	283.92 kW

Field Measurements: Individual field measurements may vary from computer-calculated predictions and should be taken in accordance with IESNA RP-6-15.

Installation Requirements: Results assume $\pm 3\%$ nominal voltage at line side of the driver and structures located within 3 feet (1m) of design locations.



SCALE IN FEET 1 : 150



ENGINEERED DESIGN By: Bryce Miles · File #215342C · 05-May-22

Pole location(s) \oplus dimensions are relative to 0,0 reference point(s) \otimes



We Make It Happen.®

Not to be reproduced in whole or part without the written consent of Musco Sports Lighting, LLC. ©1981, 2022 Musco Sports Lighting, LLC.

ILLUMINATION SUMMARY

Roseville Soccer Complex
Roseville, CA

GRID SUMMARY	
Name:	West Road Spill - Across Road
Spacing:	30.0'
Height:	0.0' above grade

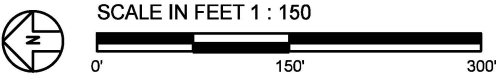
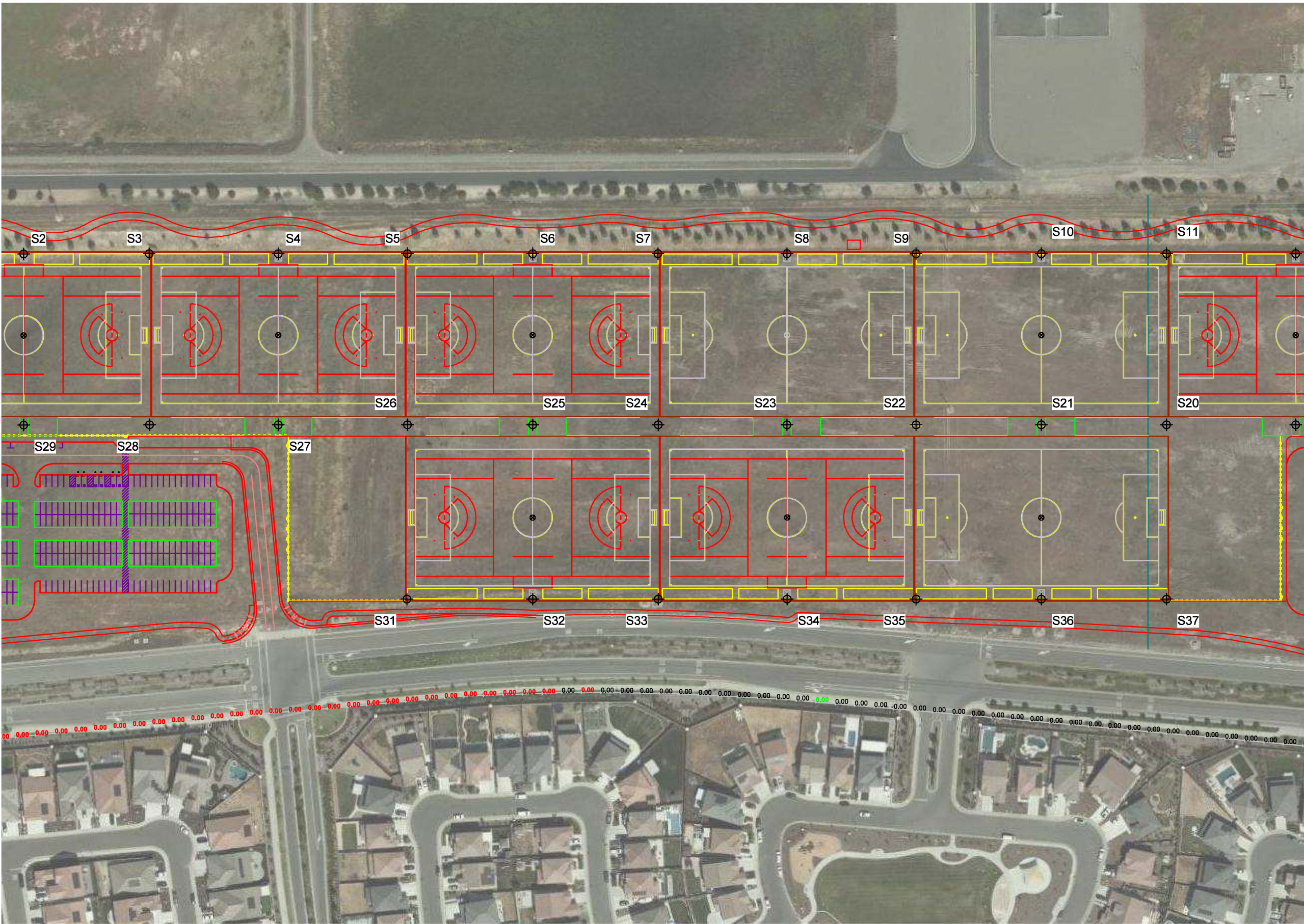
ILLUMINATION SUMMARY	
MAX VERTICAL FOOTCANDLES	
Scan Average:	Entire Grid 0.0001
Maximum:	0.00
Minimum:	0.00
No. of Points:	116
LUMINAIRE INFORMATION	
Applied Circuits:	A, B, C, D, E, F, G, H, I, J
No. of Luminaires:	214
Total Load:	283.92 kW

Guaranteed Performance: The ILLUMINATION described above is guaranteed per your Musco Warranty document.

Field Measurements: Individual field measurements may vary from computer-calculated predictions and should be taken in accordance with IESNA RP-6-15.

Electrical System Requirements: Refer to Amperage Draw Chart and/or the "Musco Control System Summary" for electrical sizing.

Installation Requirements: Results assume ± 3% nominal voltage at line side of the driver and structures located within 3 feet (1m) of design locations.



ENGINEERED DESIGN By: Bryce Miles · File #215342C · 05-May-22

Pole location(s) ⚡ dimensions are relative to 0,0 reference point(s) ⊗



We Make It Happen.®

Not to be reproduced in whole or part without the written consent of Musco Sports Lighting, LLC. ©1981, 2022 Musco Sports Lighting, LLC.

ILLUMINATION SUMMARY

Roseville,CA

Name:	West Road Spill - Across Road
Spacing:	30.0'
Height:	0.0' above grade

CANDELA (PER FIXTURE)

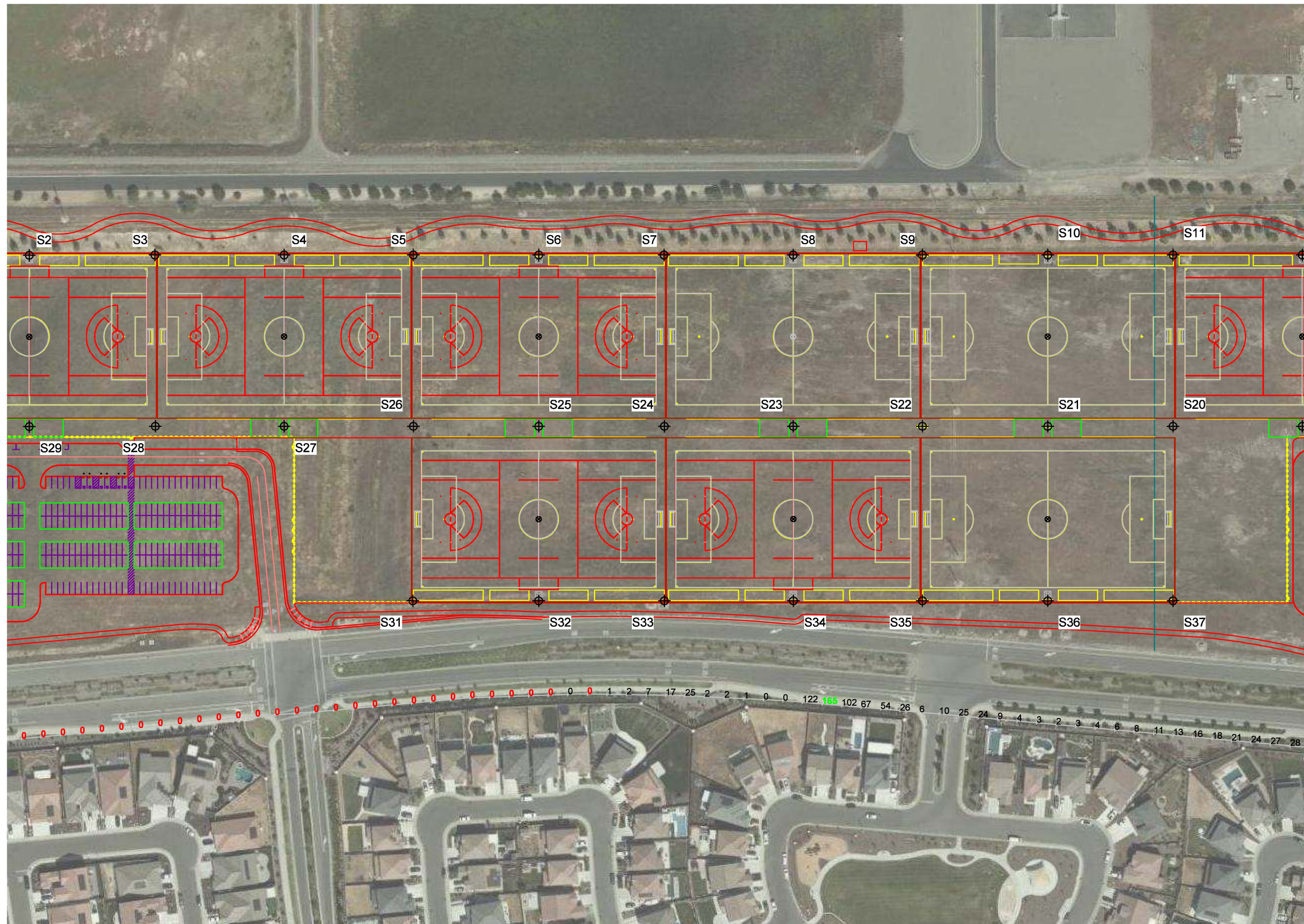
	Entire Grid
Scan Average:	7.3707
Maximum:	165.06
Minimum:	0.00
No. of Points:	116

LUMINAIRE INFORMATION

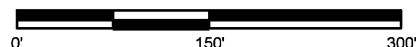
Applied Circuits:	A, B, C, D, E, F, G, H, I, J
No. of Luminaires:	214
Total Load:	283.92 kW

Field Measurements: Individual field measurements may vary from computer-calculated predictions and should be taken in accordance with IESNA RP-6-15.

Installation Requirements: Results assume $\pm 3\%$ nominal voltage at line side of the driver and structures located within 3 feet (1m) of design locations.



SCALE IN FEET 1 : 150



ENGINEERED DESIGN By: Bryce Miles · File #215342C · 05-May-22

Pole location(s) \oplus dimensions are relative to 0,0 reference point(s) \otimes



We Make It Happen.®

Not to be reproduced in whole or part without the written consent of Musco Sports Lighting, LLC. ©1981, 2022 Musco Sports Lighting, LLC.

ILLUMINATION SUMMARY

Roseville Soccer Complex
Roseville, CA

GRID SUMMARY	
Name:	East Road Spill - Across Road
Spacing:	30.0'
Height:	3.0' above grade

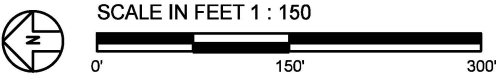
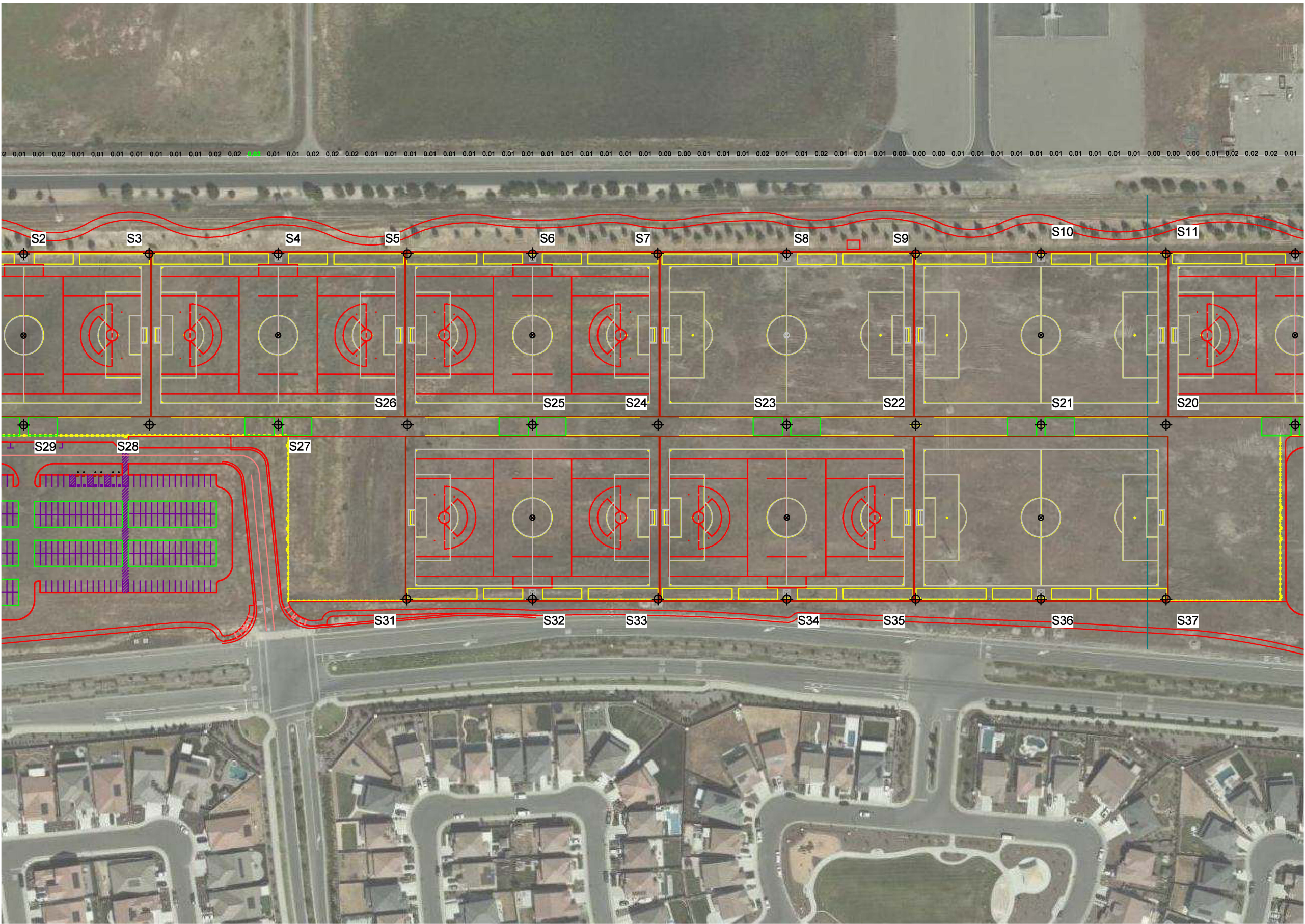
ILLUMINATION SUMMARY	
HORIZONTAL FOOTCANDLES	
Scan Average:	Entire Grid 0.0108
Maximum:	0.02
Minimum:	0.00
No. of Points:	94
LUMINAIRE INFORMATION	
Applied Circuits:	A, B, C, D, E, F, G, H, I, J
No. of Luminaires:	214
Total Load:	283.92 kW

Guaranteed Performance: The ILLUMINATION described above is guaranteed per your Musco Warranty document.

Field Measurements: Individual field measurements may vary from computer-calculated predictions and should be taken in accordance with IESNA RP-6-15.

Electrical System Requirements: Refer to Amperage Draw Chart and/or the "Musco Control System Summary" for electrical sizing.

Installation Requirements: Results assume ± 3% nominal voltage at line side of the driver and structures located within 3 feet (1m) of design locations.



Pole location(s) ⦿ dimensions are relative to 0,0 reference point(s) ⊗



We Make It Happen®

Not to be reproduced in whole or part without the written consent of Musco Sports Lighting, LLC. ©1981, 2022 Musco Sports Lighting, LLC.

ILLUMINATION SUMMARY

Roseville Soccer Complex
Roseville, CA

GRID SUMMARY	
Name:	East Road Spill - Across Road
Spacing:	30.0'
Height:	3.0' above grade

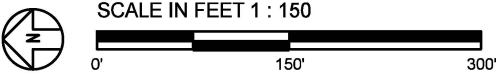
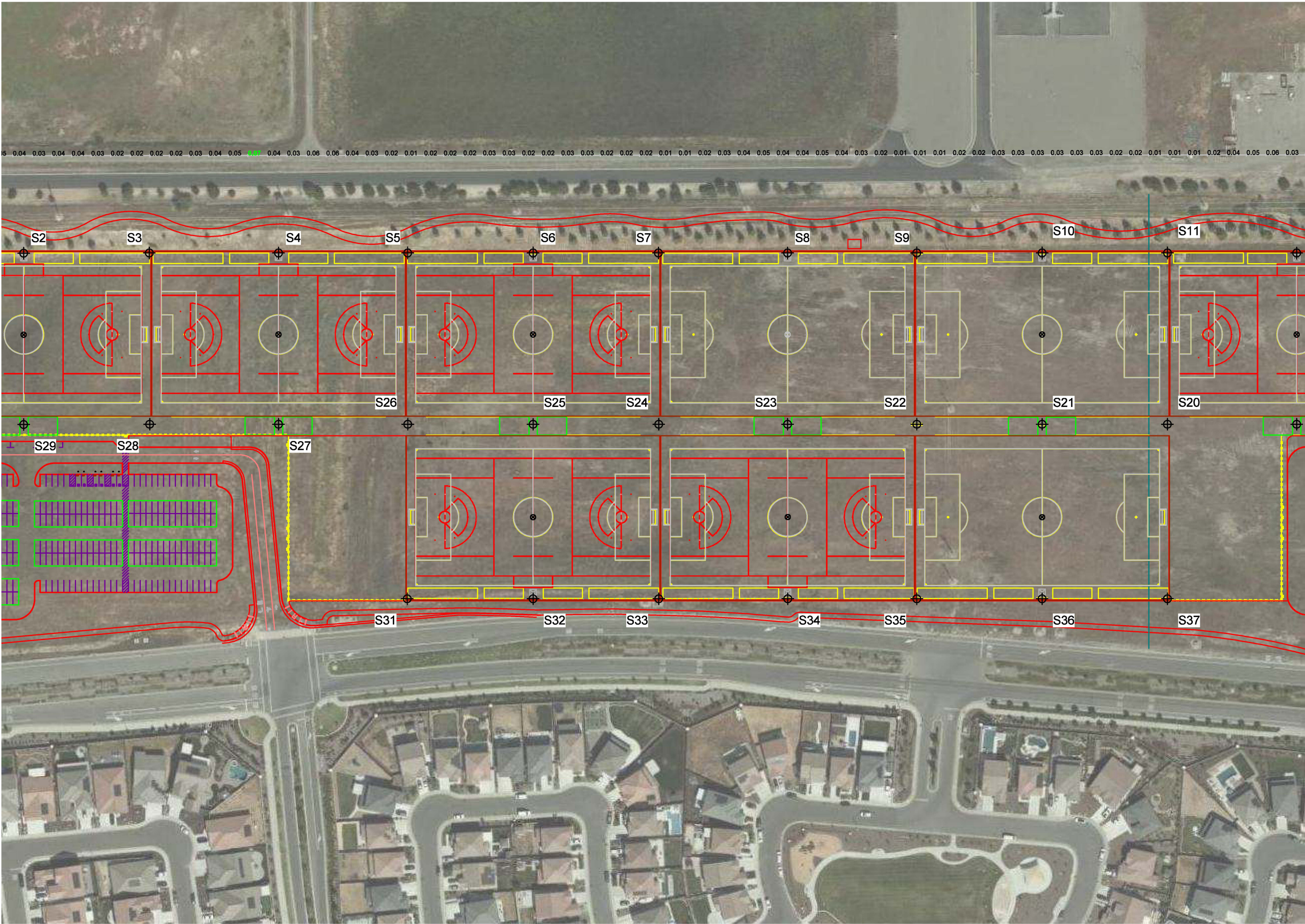
ILLUMINATION SUMMARY	
MAX VERTICAL FOOTCANDLES	
Scan Average:	Entire Grid 0.0291
Maximum:	0.07
Minimum:	0.00
No. of Points:	94
LUMINAIRE INFORMATION	
Applied Circuits:	A, B, C, D, E, F, G, H, I, J
No. of Luminaires:	214
Total Load:	283.92 kW

Guaranteed Performance: The ILLUMINATION described above is guaranteed per your Musco Warranty document.

Field Measurements: Individual field measurements may vary from computer-calculated predictions and should be taken in accordance with IESNA RP-6-15.

Electrical System Requirements: Refer to Amperage Draw Chart and/or the "Musco Control System Summary" for electrical sizing.

Installation Requirements: Results assume ± 3% nominal voltage at line side of the driver and structures located within 3 feet (1m) of design locations.



Pole location(s) ⚓ dimensions are relative to 0,0 reference point(s) ⊗



We Make It Happen®

Not to be reproduced in whole or part without the written consent of Musco Sports Lighting, LLC. ©1981, 2022 Musco Sports Lighting, LLC.