

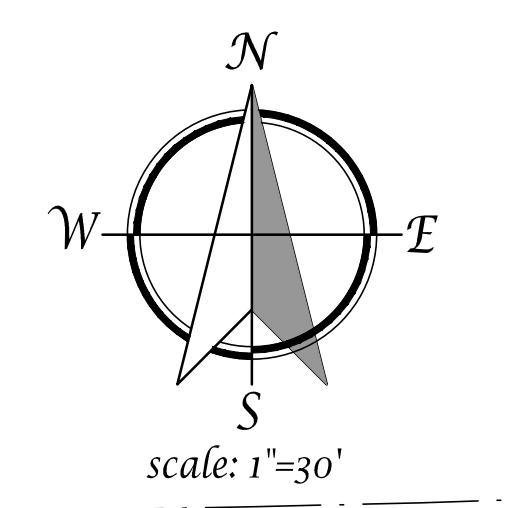
UTILITY LEGEND		
DESCRIPTION	PROPOSED	EXISTING
STORM DRAIN		
STORM DRAIN MANHOLE		
DROP INLET		
OVERLAND RELEASE ARROW		

**EARTHWORK CALCULATIONS:**  
 (FOLLOWING NUMBERS ARE FOR PERMITTING PURPOSES ONLY. CONTRACTOR IS RESPONSIBLE FOR THEIR OWN EARTH WORK QUANTITIES)  
 CUT: ±11,000 CU.YD.  
 FILL: ±13,300 CU.YD.  
 NET: ±2,300 (IMPORT)

PRIOR TO SITE CONSTRUCTION; CONTRACTOR SHALL PROVIDE CITY INSPECTOR THE LOCATION OF THE IMPORT (OR EXPORT) SITE AND THE ASSOCIATED GRADING PERMIT FOR THE CORRESPONDING SITE.

- GENERAL NOTES**
1. TOPOGRAPHIC INFORMATION SHALL BE FIELD VERIFIED BY CONTRACTOR PRIOR TO CONSTRUCTION.
  2. TOPOGRAPHIC FIELD SURVEY PREPARED BY TSD ENGINEERING, INC. DATE OF FIELD SURVEY: FEBRUARY 17, 2022.
  3. TOPOGRAPHIC AERIAL SURVEY PREPARED BY AEROTAS. DATE OF AERIAL SURVEY: FEBRUARY 03, 2022.

**CITY OF ROSEVILLE**  
**BENCHMARK NO 129:** **96.120 FEET**  
 3-1/4" BRASS DISK STAMPED 2018 PLS 8278, LOCATED ON THE NORTHEAST ANGLE POINT OF THE CON/SPAN ON THE EAST SIDE OF WESTBROOK BLVD. BEING APPROX. 2000 FEET NORTH OF THE INTERSECTION WITH PLEASANT GROVE BLVD. ELEVATION = 96.120 (NAVD88)



## WINDING CREEK APARTMENTS - ROSEVILLE PRELIMINARY GRADING PLAN C 4.0

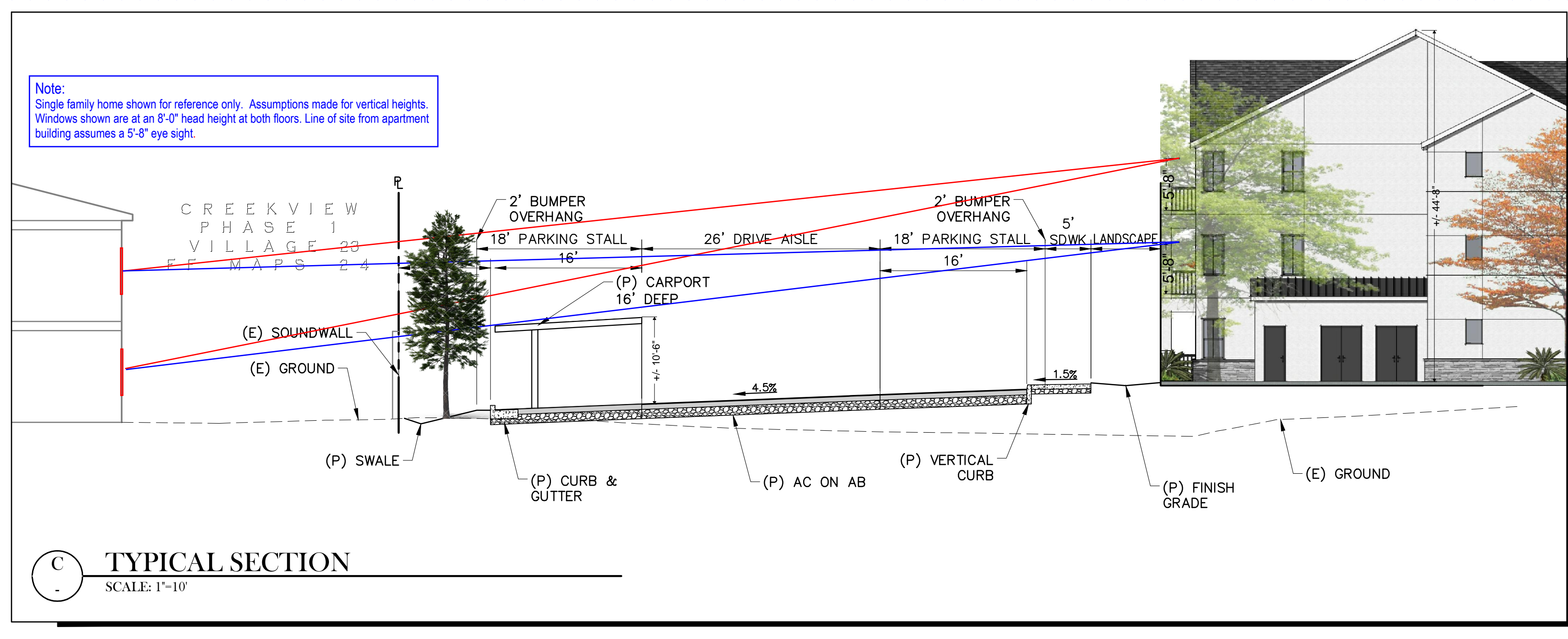
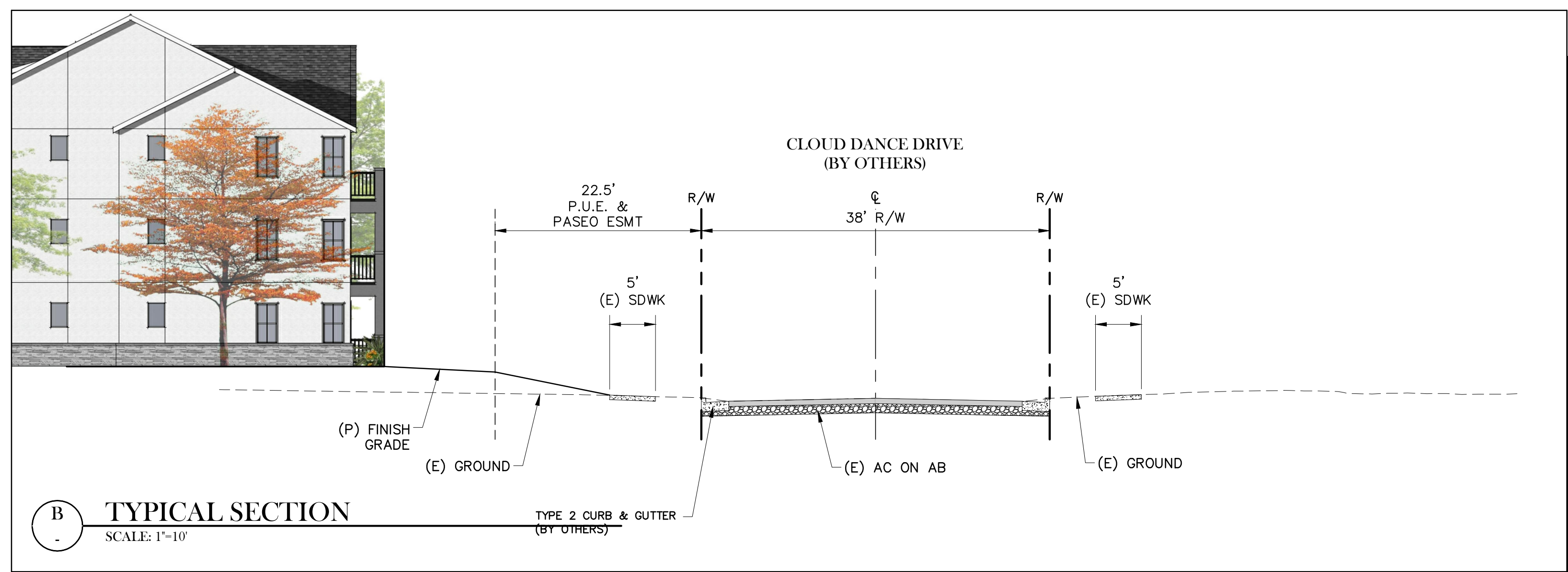
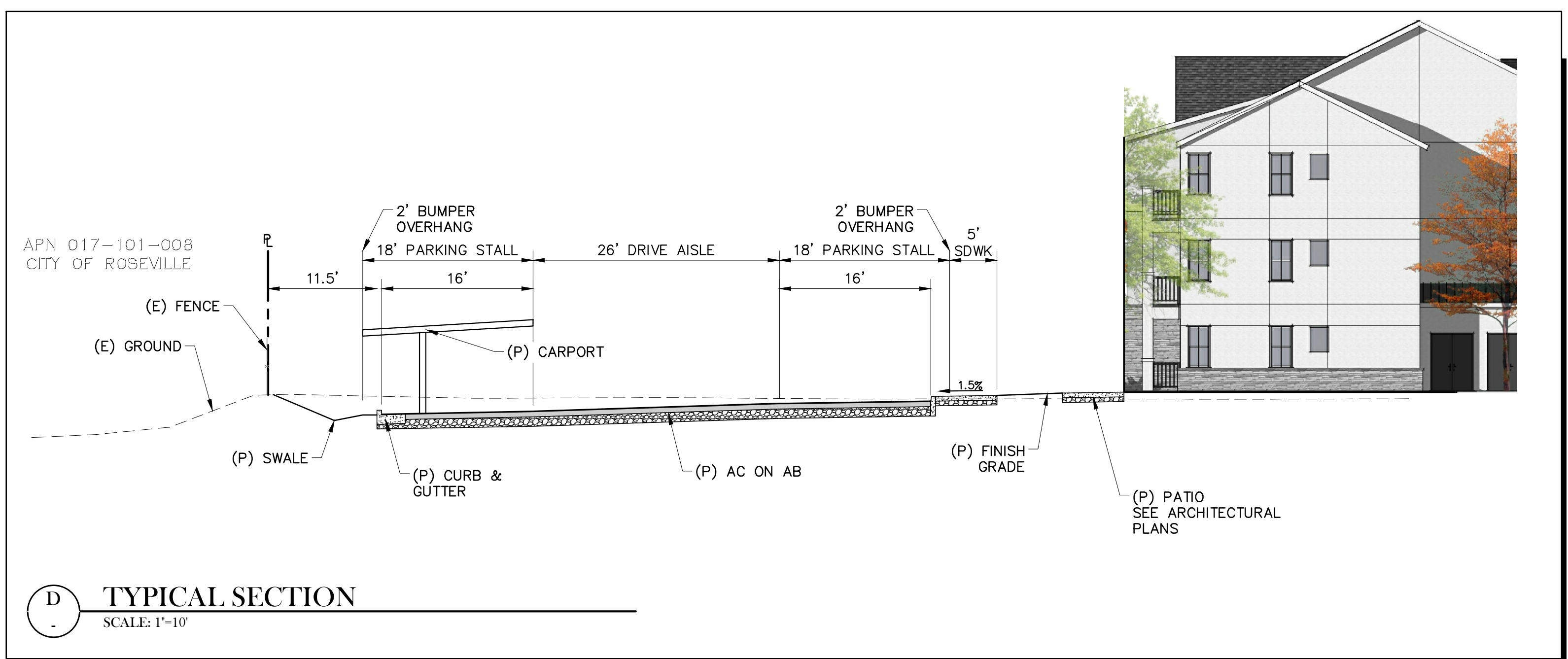
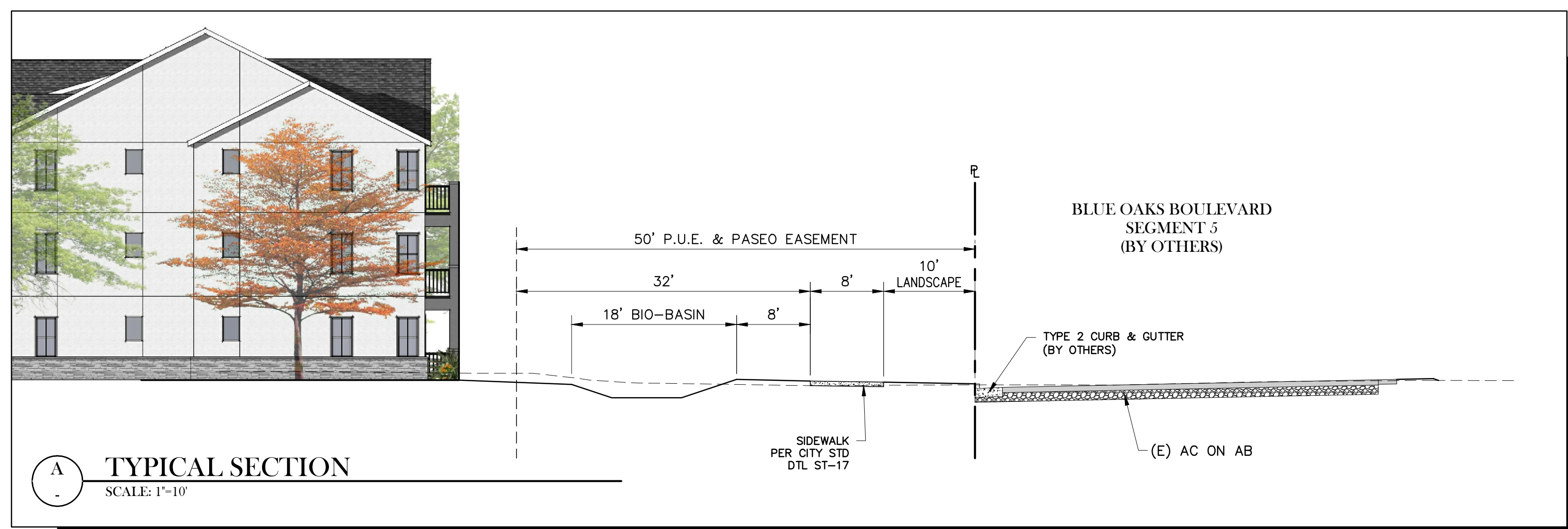
3338 Blue Oaks Blvd at Cloud Dance Dr, Roseville, California

Proposed By: **Anthem United**  
 Anthem United  
 3001 Douglas Blvd  
 Roseville, CA 95661

**TSD ENGINEERING, INC.**  
 expect more.  
 785 Orchard Drive, Suite #110  
 Folsom, CA 95630  
 Phone: (916) 608-0707  
 Fax: (916) 608-0701

JULY 14, 2022  
 FINAL DRP SUBMITTAL

F:\Projects\500-002\_DWG\3- Planning\FIG\C4.0 Preliminary Grading Plan.dwg, Date: 14:15:06, 07-14-22



WINDING CREEK APARTMENTS - ROSEVILLE PRELIMINARY GRADING SECTIONS C 4 . 1

3338 Blue Oaks Blvd at Cloud Dance Dr, Roseville, California

Proposed By: **Anthem United**  
 Anthem United  
 3001 Douglas Blvd  
 Roseville, CA 95661

JULY 14, 2022  
 FINAL DRP SUBMITTAL

**TSD ENGINEERING, INC.**  
 expect more.  
 785 Orchard Drive, Suite #110  
 Folsom, CA 95630  
 Phone: (916) 608-0707  
 Fax: (916) 608-0701

P:\Projects\500-002\02 DWG\3- Planning\FIG\C4.1 Preliminary Grading Sections.dwg, Date: 08/09/22, 07:26:22