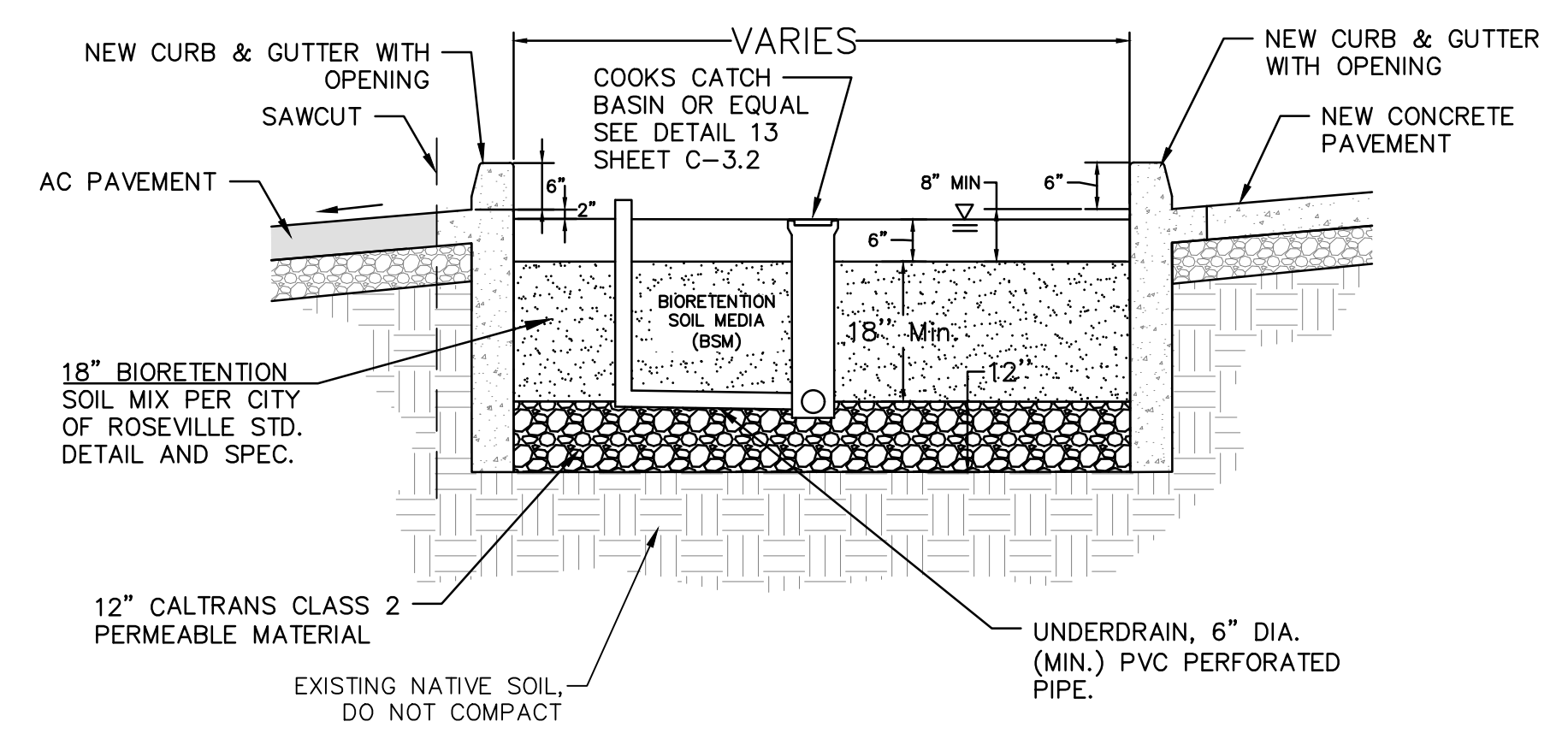
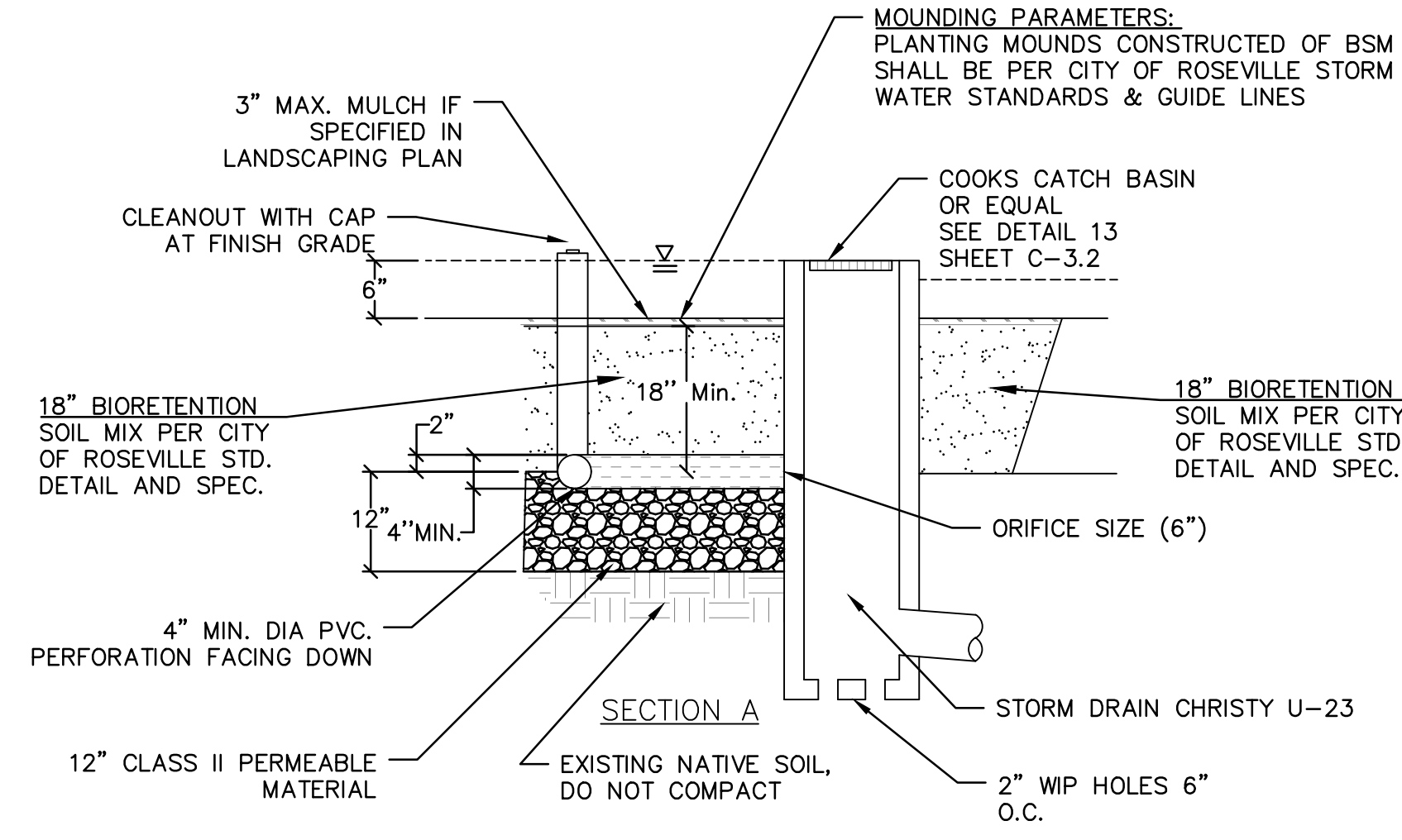
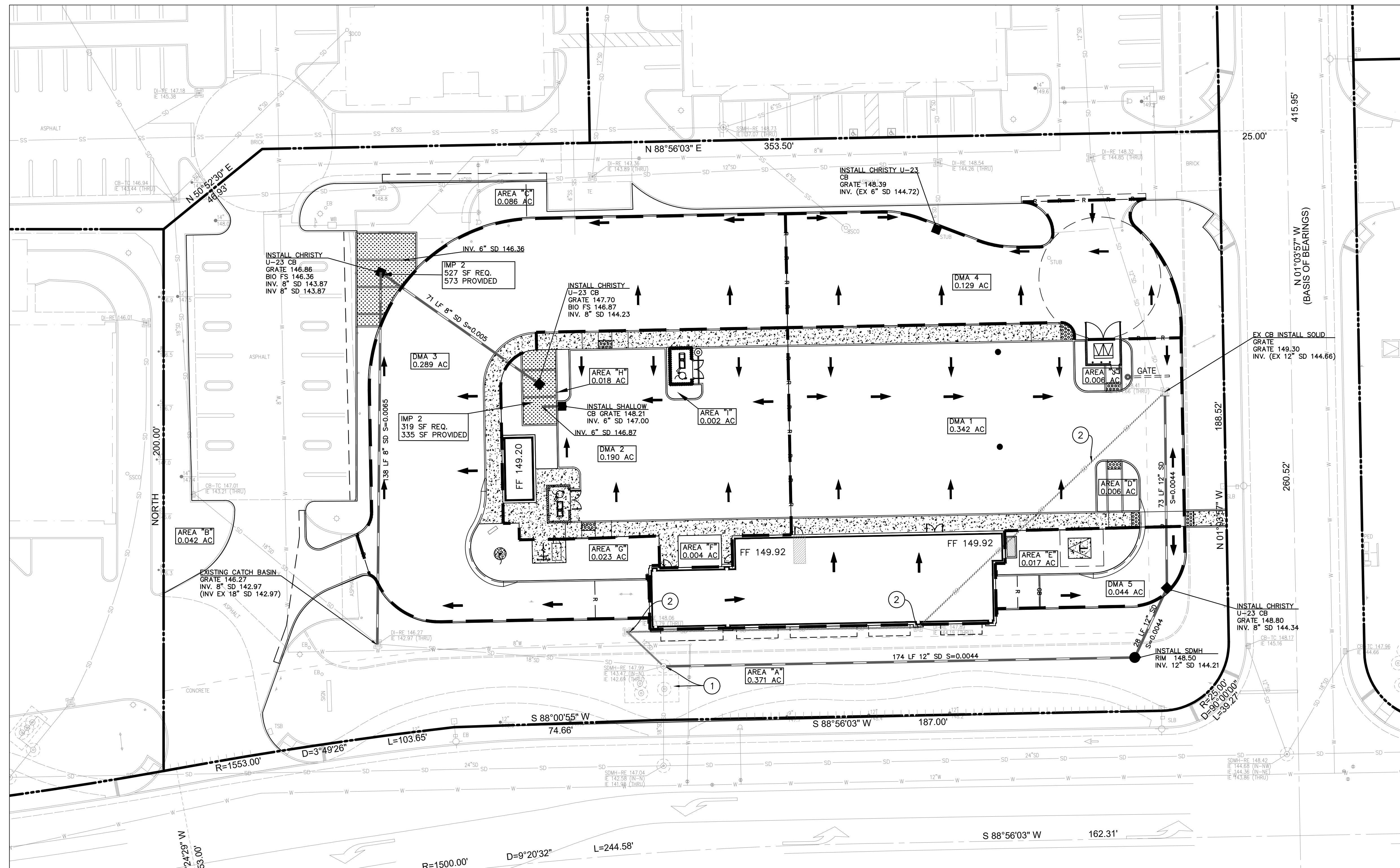


GRAPHIC SCALE
1"=20'



1. NO LINER, NO FILTER FABRIC, NO LANDSCAPE CLOTH BETWEEN BSM AND AGGREGATE.
2. MAINTAIN THE ELEVATIONS AS SHOWN ON THROUGHOUT BIO-RETENTIONS AREA AS SPECIFIED IN PLAN.
3. CLASS 2 PERMEABLE MATERIAL LAYER MAY EXTEND BELOW AND UNDERNEATH INLET.

BIO-RETENTION DETAIL

DATE:	REV #	BY	DATE	DESCRIPTION
02-07-23	1			
SCALE:	DESIGNED:			
1" = 20'	DRAWN:			
	CHECKED:			
	PROJ. MGR:			
	FILE PATH:			

801 YGNACIO VALLEY ROAD SUITE 220 WALNUT CREEK, CA 94596 925-943-2777 FAX 925-943-2778
ams associates, inc. PLANNING ENGINEERING SURVEYING
CALIFORNIA
1590 VINEYARD ROAD
ROSEVILLE
STORMWATER PLAN
QUICK QUACK CAR WASH #26-077
PRODUCTION 22-2630 Q0# 26-077 FOOTHILL AND VINEYARD, ROSEVILLE CA LATEST DATE DIRECTORY\22-11-10\2630 STORMWATER.DWG

SHEET C-51	OF
PROJECT 22-2630	

