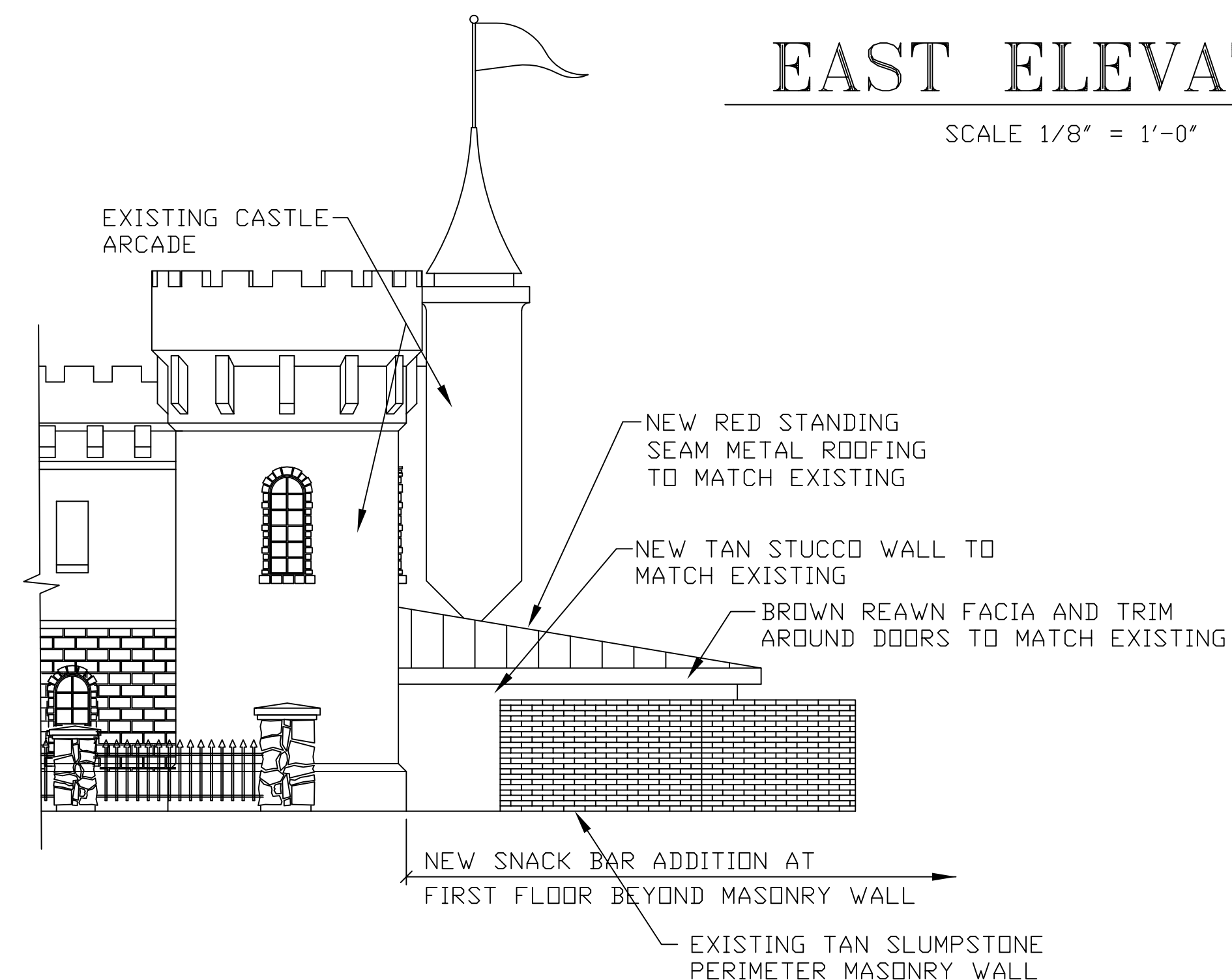


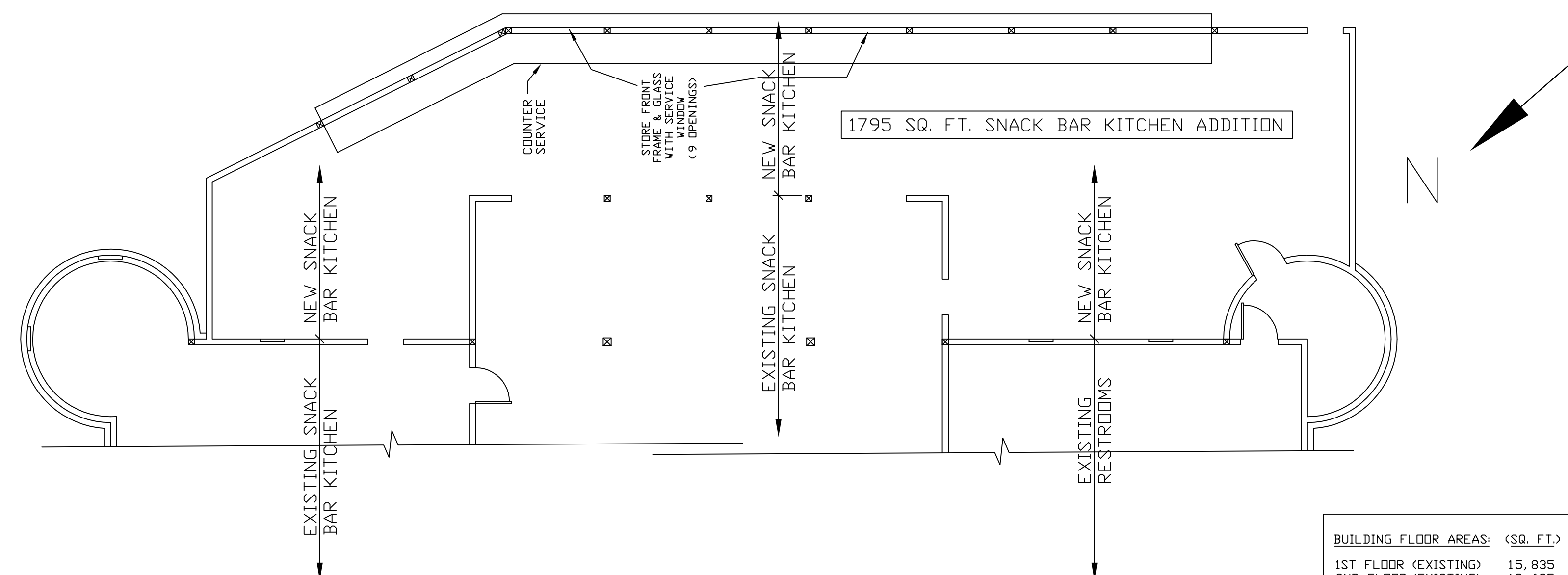
### EAST ELEVATION

SCALE 1/8" = 1'-0"



### SOUTH ELEVATION

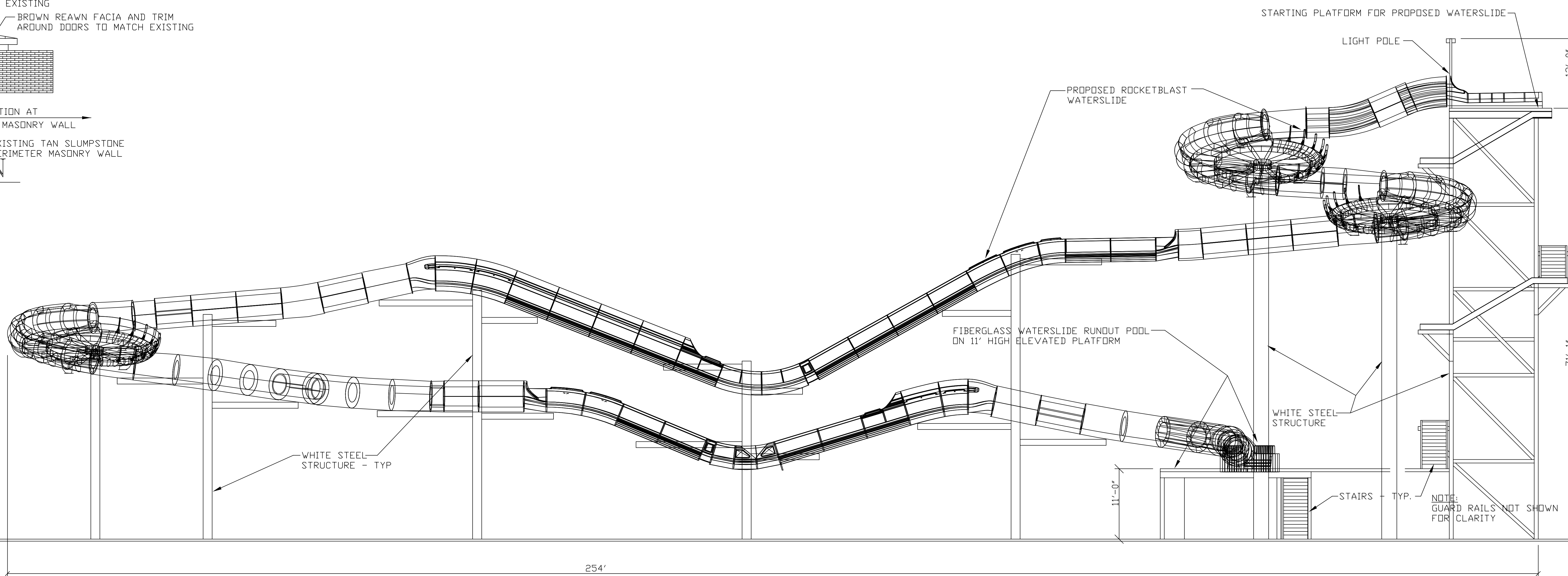
SCALE 1/8" = 1'-0"



### CASTLE ADDITION FLOOR PLAN

SCALE 1/8" = 1'-0"

BUILDING FLOOR AREAS <SQ. FT.>	
1ST FLOOR <EXISTING>	15,835
2ND FLOOR <EXISTING>	13,635
SNACK BAR ADDITION	1,795
TOTAL AREA	31,265



### NORTH ELEVATION

SCALE 1/8"=1'-0"

GOLFLAND ENTERTAINMENT CENTERS, INC.  
FRED KENNEY  
1893 TAYLOR ROAD  
ROSEVILLE, CA 95661  
PH. (916) 784-1273

EJNSE INC.  
9718 FAIR OAKS BLVD., SUITE A  
FAIR OAKS, CA 95628  
PH. (916) 966-5400  
EDWIN J. NICHOLSON SE 3336

ROSEVILLE GOLFLAND - ROCKETBLAST WATERSLIDES  
1893 TAYLOR ROAD  
ROSEVILLE, CALIF. 95661

REV.	DATE	DESCRIPTION	BY	SHEET 2 ELEVATION
-	7-25-18	CNR_BLAST_UX_R_RB2_U	FBK	