

# ROSEVILLE CIVIC PLAZA

FOUR STORY CLASS A OFFICE BUILDING  
IN DOWNTOWN ROSEVILLE

116 S. Grant Street



4th Floor Executive Offices (secured/private)

4th Floor Balcony

Parking Garage 360 Spaces



For sales inquiries contact:

Joseph Mohamed, Sr. | email: [re.projects4u@gmail.com](mailto:re.projects4u@gmail.com) | office: 916.489.4504 | mobile: 916.600.9445



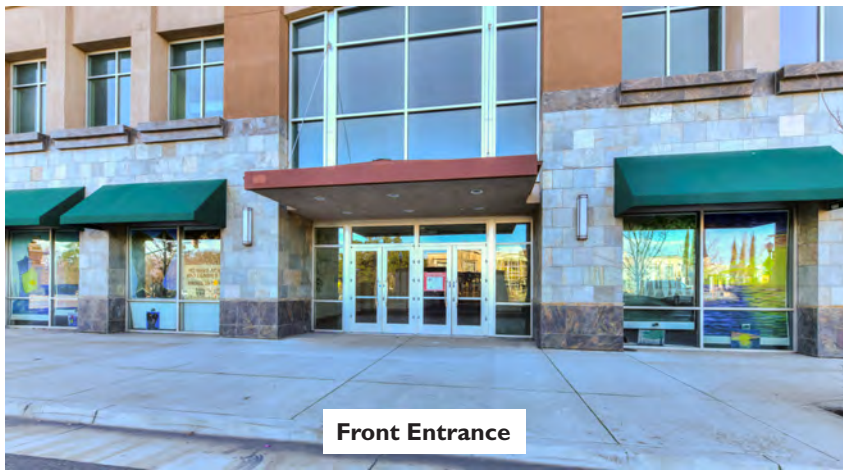


## HIGHLIGHTS:

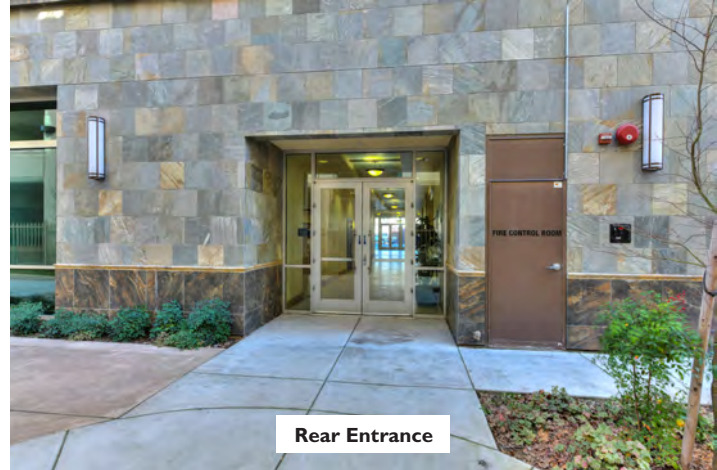
- Approximately 52,000 square feet of rentable building space w/ 15% load; Lobby, Courtyard, Hallways, Restrooms, etc.
- Currently divided into 8 suites of similar size ranging from 5,216 - 5769 square feet (2 on each floor)
- Each suite has its own independently thermostat to measure BTU usage and electric meter.
- Secured/private access to 4th floor with balcony overlooking Roseville Civic Center and Park
- Wet columns for snack bars, etc. - Water, Drain & Electric
- Panoramic views on all floors are ideally suited for modular furniture throughout
- Walk to shops, parks, restaurants, movies and more. Minutes from Interstate 80 / Hwy 65.
- 360 permanently dedicated parking spaces in the garage for this building







**Front Entrance**



**Rear Entrance**

**View of City Hall and Town Square from the 4th Floor Balcony**



**Electrical Room**



**View from Above**



# DOWNTOWN ROSEVILLE LOCATION



**1.** Roseville Civic Plaza

**2.** Civic Center City Hall

**7.** Fire Station

**10.** Dry Creek

**3.** Town Square

**4.** Vernon Street

**8.** Post Office

**5.** Oak Street

**6.** S. Grant Street

**9.** Parking Garage

**11.** Lincoln St.



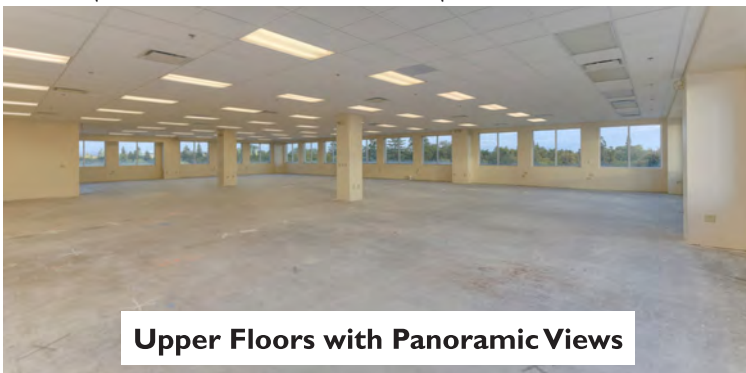
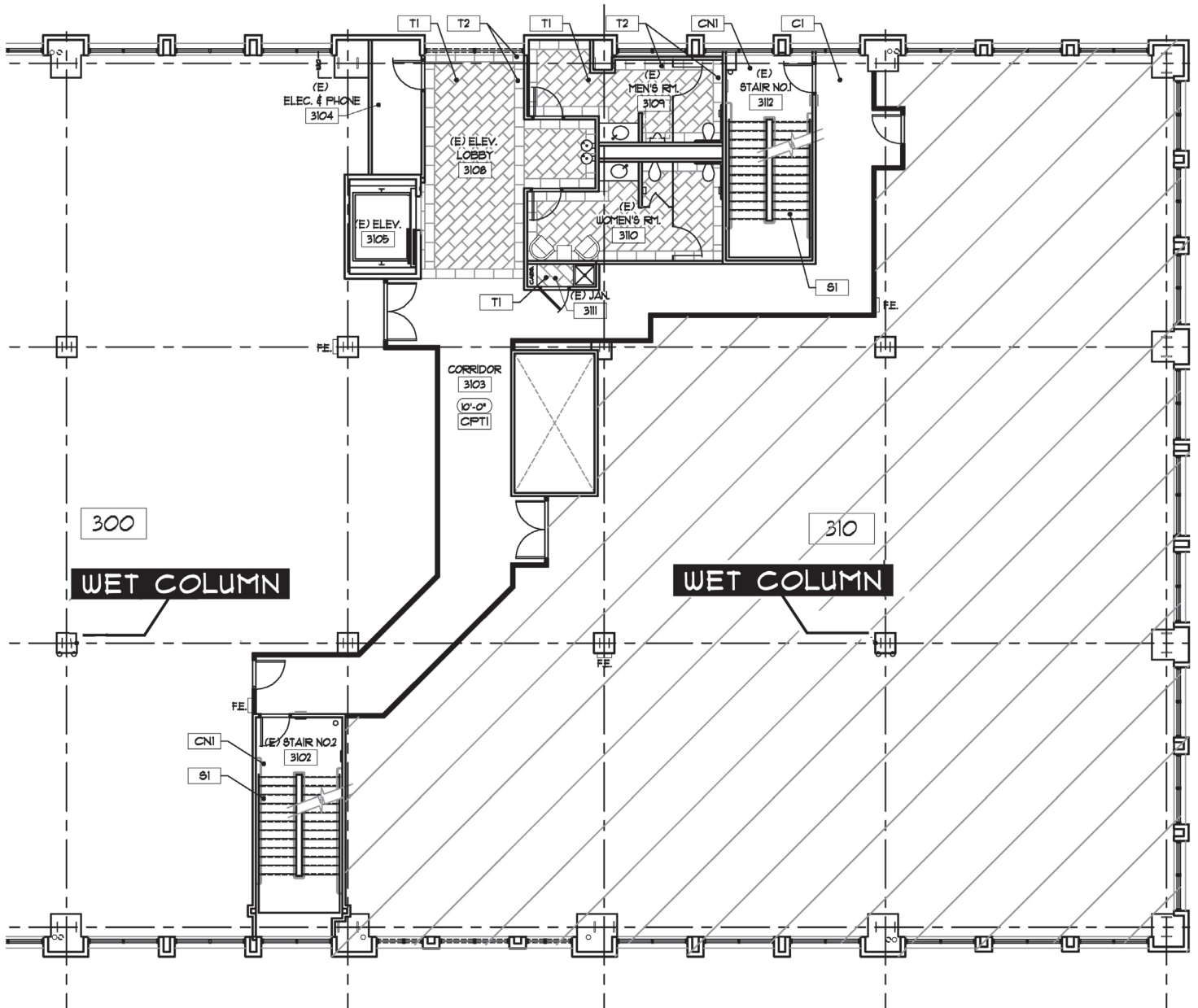




# EXAMPLE SUITE FLOORS 2-4

## Office Professional

Approx. 5,632 to 5,769 square feet of tenant space • +15% Load







## Old Town Charm Meets Modern Design

In the heart of Downtown Roseville, The **Roseville Civic Plaza** is a brand new office building situated directly across from the Roseville Civic Center and Town Square. A short walk to shops, restaurants, and entertainment this building offers spectacular views, superb location, and breathtaking architecture. Designed to accommodate today's sophisticated businesses, it features state-of-the-art technology, abundant power and data supply to each suite, and covered parking directly adjacent to the building



**Vernon Street, Downtown Roseville**



**Corner of Lincoln and Main, Downtown Roseville**



**For sales inquiries contact:**

**Joseph Mohamed, Sr. | email: [re.projects4u@gmail.com](mailto:re.projects4u@gmail.com) | office: 916.489.4504 | mobile: 916.600.9445**